

# WINCORE™

## WINDOWS & DOORS

250 Staunton Turnpike, Parkersburg, WV 26104

### 7700/9900 Series Vinyl Horizontal Sliding Window "NON-IMPACT"

#### GENERAL NOTES

1. This product has been evaluated and is in compliance with the 2010 Florida Building Code (FBC) structural requirements excluding the "High Velocity Hurricane Zone" (HVHZ).
2. Product anchors shall be as listed and spaced as shown on details. Anchor embedment to base material shall be beyond wall dressing or stucco.
3. When used in areas requiring wind borne debris protection this product is required to be protected with an impact resistant covering that complies with Section 1609.1.2 of the FBC.
4. For 2x stud framing construction, anchoring of these units shall be the same as that shown for 2x buck masonry construction.
5. Site conditions that deviate from the details of this drawing require further engineering analysis by a licensed engineer or registered architect.

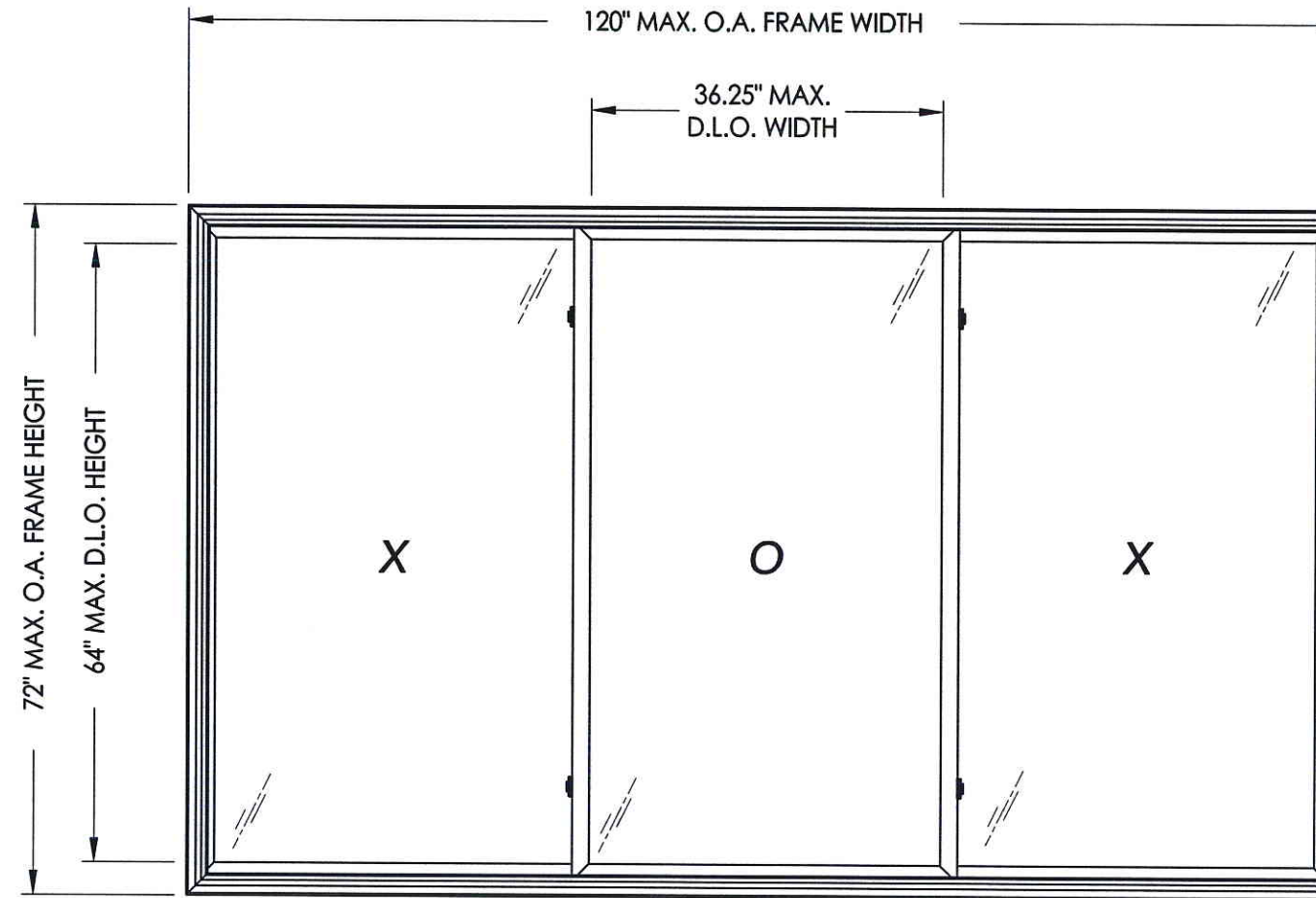


TABLE OF CONTENTS	
SHEET#	DESCRIPTION
1	Typical elevations, design pressures and general notes
2	Horizontal cross sections
3	Vertical cross sections
4	Buck and frame anchoring
5	Bill of materials, components & glazing details

MAX. FRAME DIMENSION	MAX. D.L.O. DIMENSION	GLASS TYPE	DESIGN PRESSURE (PSF)	
			POSITIVE	NEGATIVE
120.0" X 72.0"	36.25" X 64.0"	G1	+30.0	-30.0

Documents Prepared By:

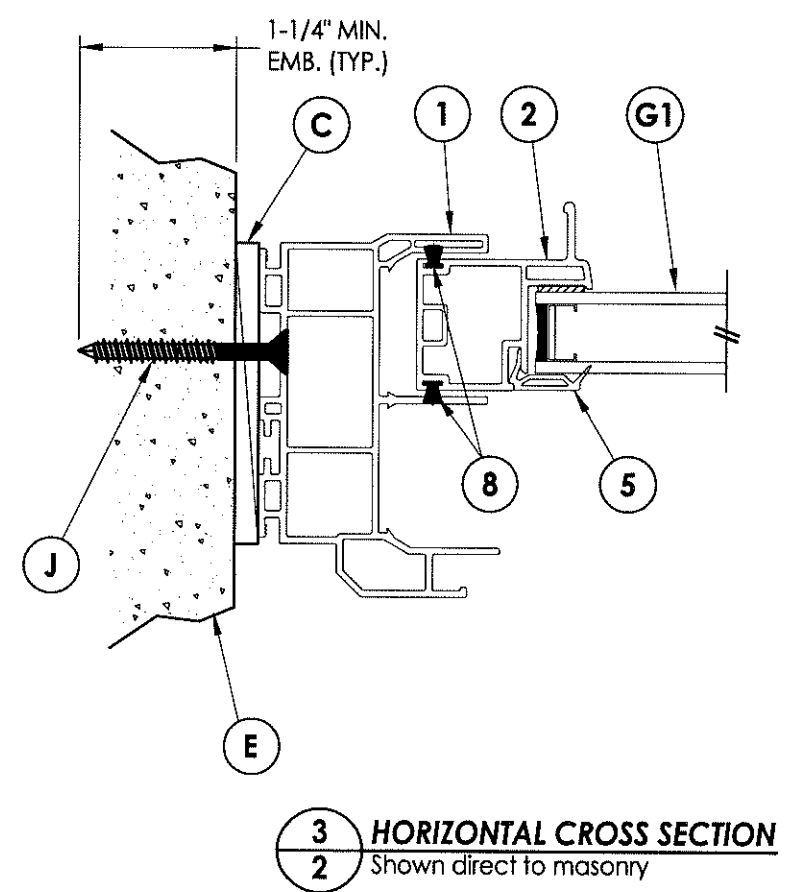
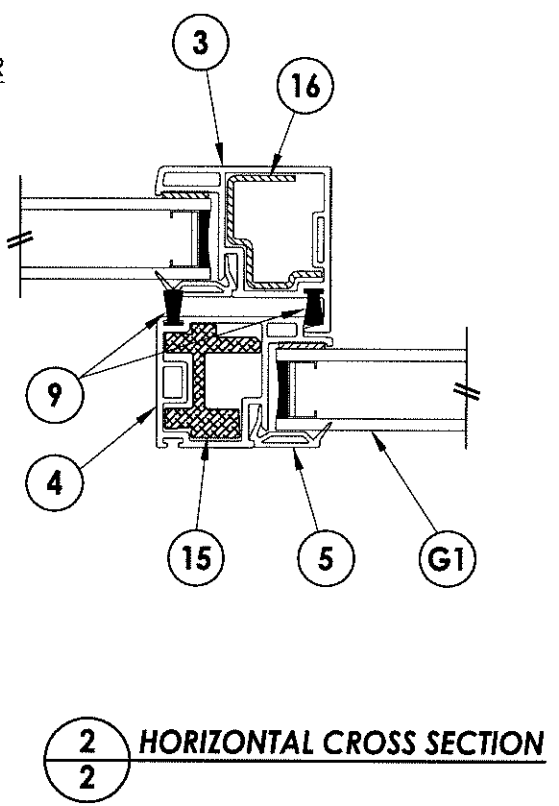
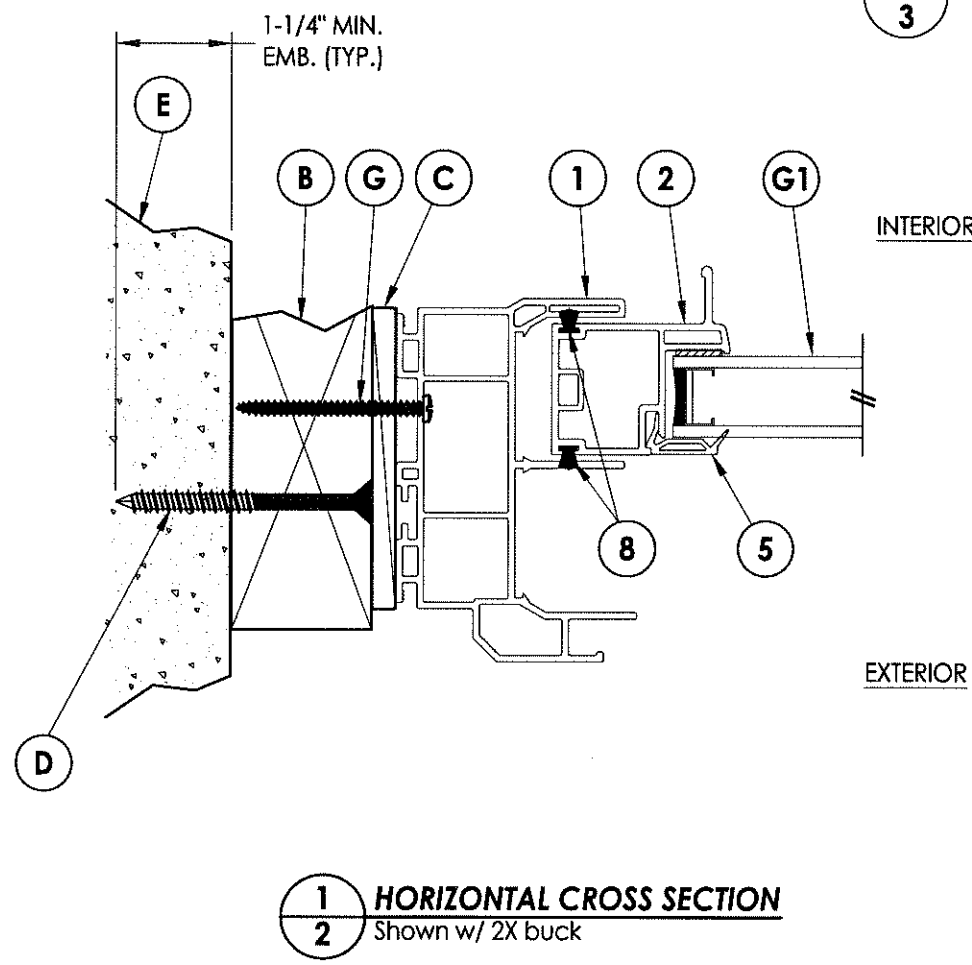
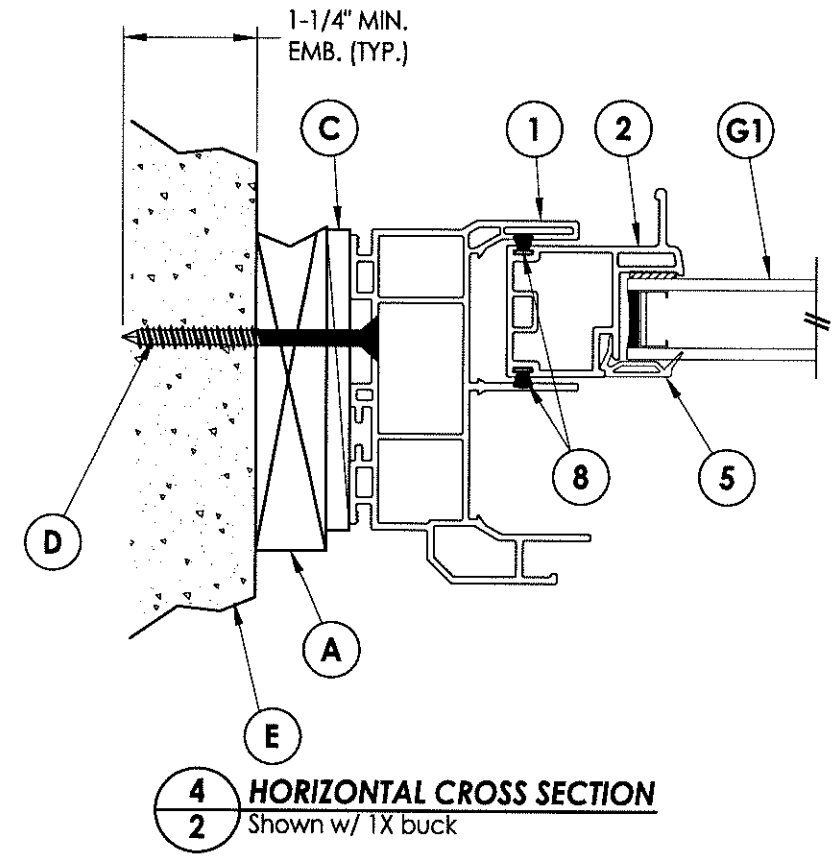
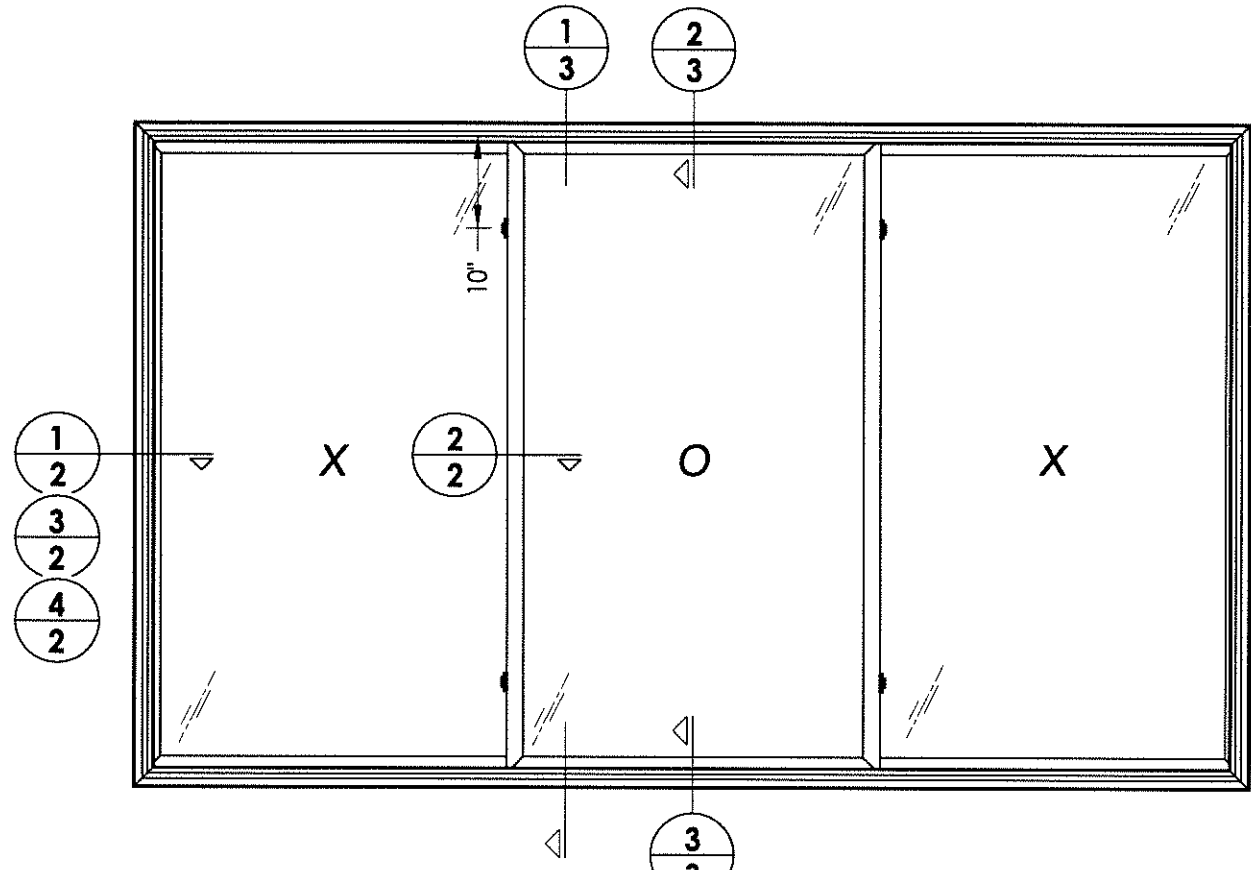
**R.W.** BUILDING CONSULTANTS, INC.  
P.O. Box 230 Valrico FL 33595  
Phone No.: 813.659.9197  
Florida Board of Professional Engineers  
Certificate Of Authorization No. 9813  
*LFS* 10.23.13  
Lyndon F. Schmidt, P.E. No. 43409

PRODUCT: 7700/9900 SERIES  
1/3-1/3-1/3

PART OR ASSEMBLY:  
TYPICAL ELEVATION, DESIGN PRESSURES & GENERAL NOTES

NO.	DATE	BY	REVISIONS

DATE: 10/04/13  
SCALE: N.T.S.  
DWG. BY: JK  
CHK. BY: LFS  
DRAWING NO.: FL-16092.11  
SHEET 1 OF 5

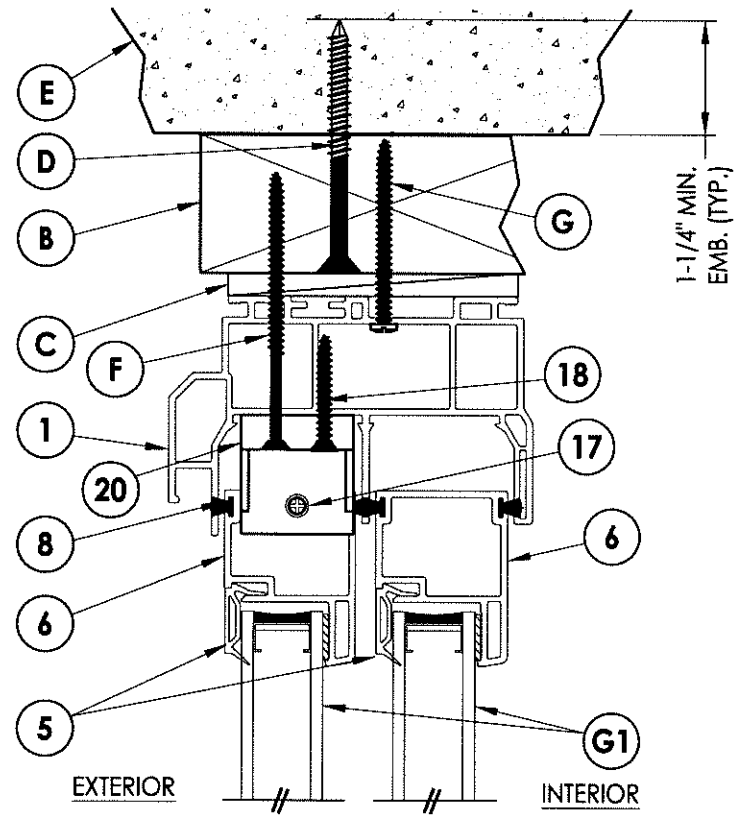


Documents Prepared By:  
**RW** BUILDING CONSULTANTS, INC.  
 P.O. Box 230 Valrico FL, 33595  
 Phone No.: 813.659.9197  
 Florida Board of Professional Engineers  
 Certificate Of Authorization No. 9813  
*RW* 10 23 13  
 Lyndon F. Schmidt, P.E. No. 43409

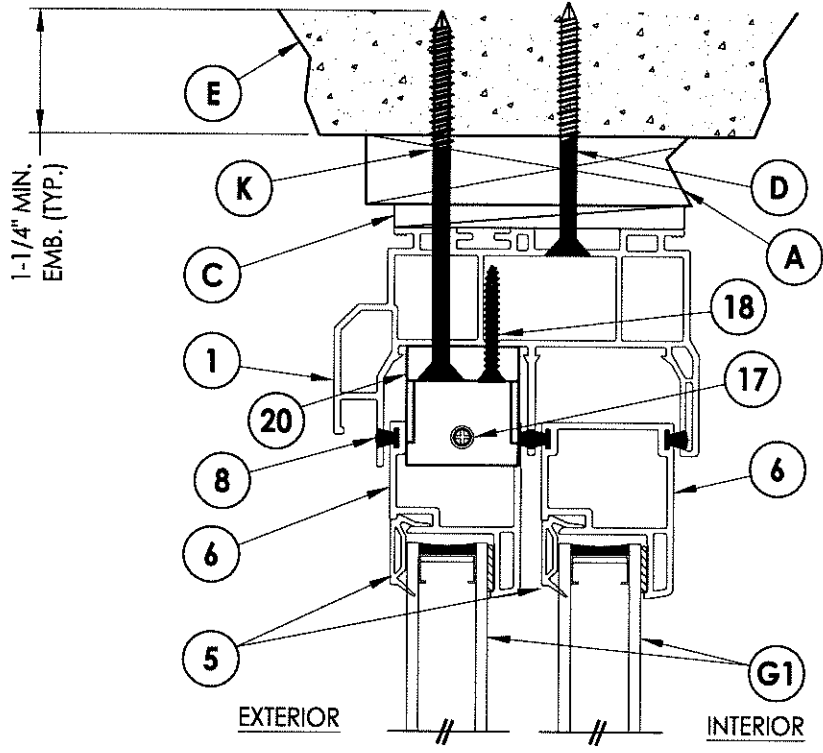
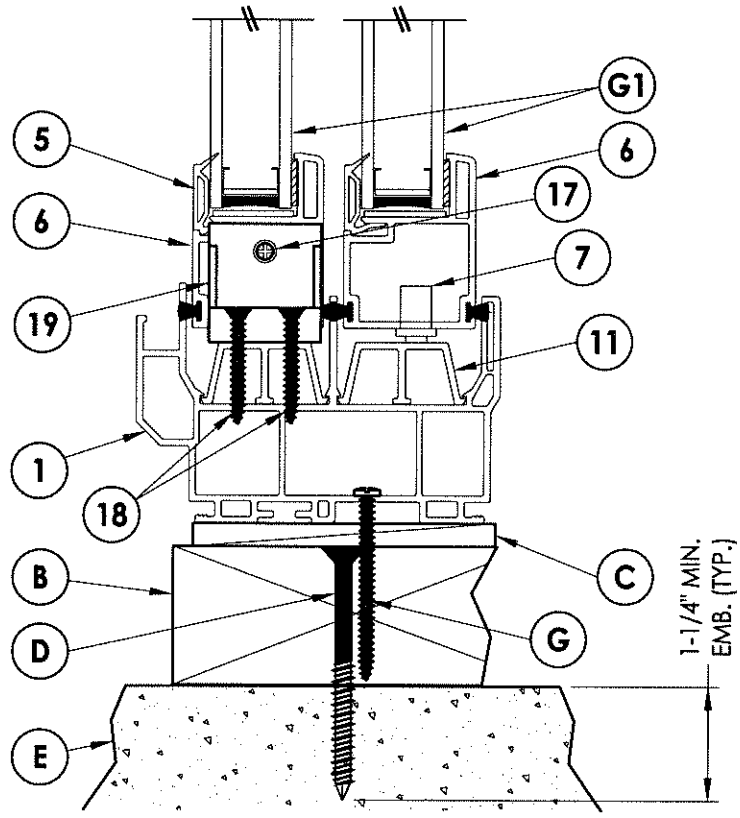
PRODUCT: 7700/9900 SERIES  
 1/3-1/3-1/3  
 PART OR ASSEMBLY:  
 HORIZONTAL CROSS SECTIONS

NO.	DATE	BY

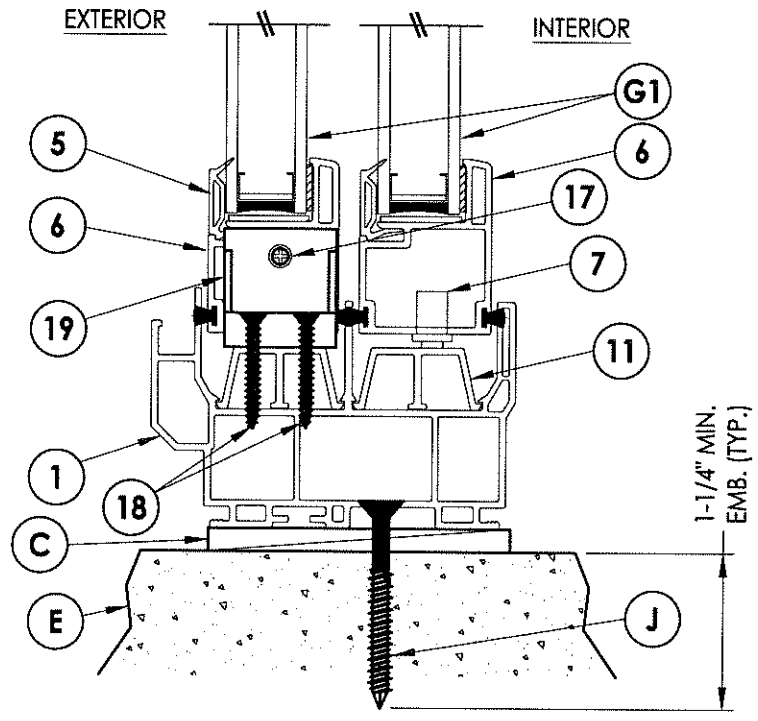
DATE: 10/04/13  
 SCALE: N.T.S.  
 DWG. BY: JK  
 CHK. BY: LFS  
 DRAWING NO.: FL-16092.11  
 SHEET 2 OF 5



**1 VERTICAL CROSS SECTION**  
3 Shown w/ 2X buck



**2 VERTICAL CROSS SECTION**  
3 Shown w/ 1X buck



**3 VERTICAL CROSS SECTION**  
3 Shown direct to masonry

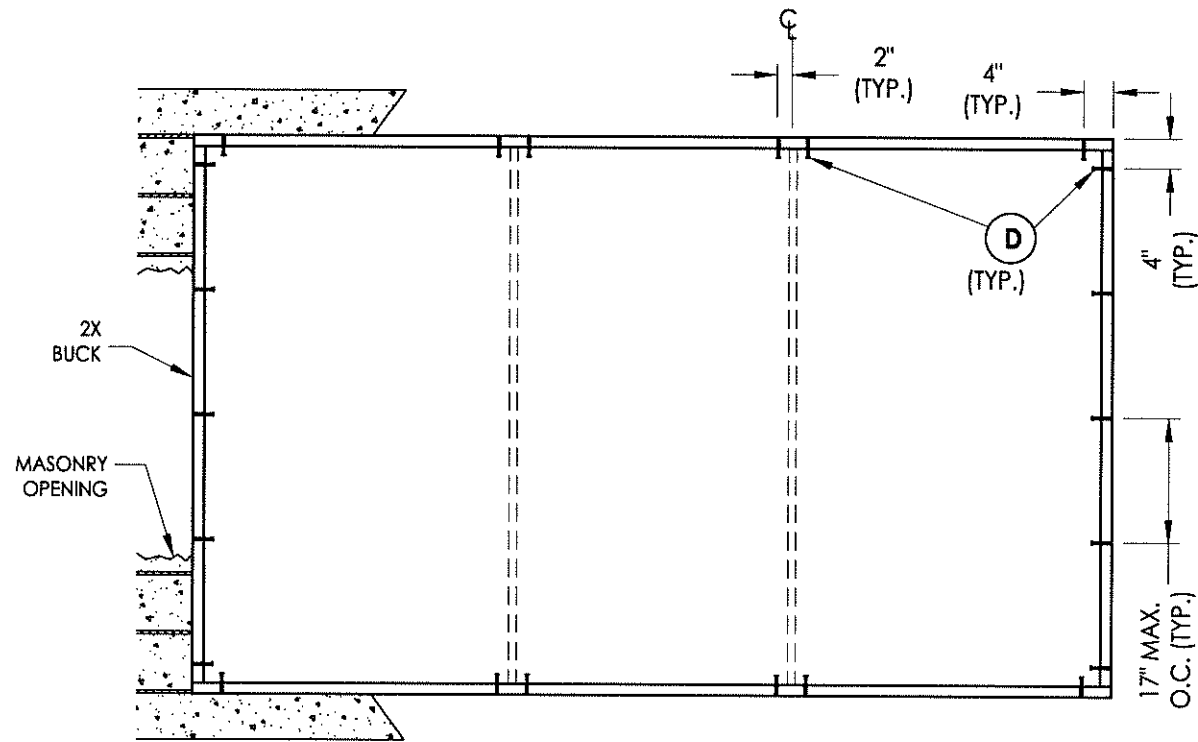
PRODUCT: 7700/9900 SERIES  
1/3-1/3-1/3

PART OR ASSEMBLY: VERTICAL CROSS SECTIONS

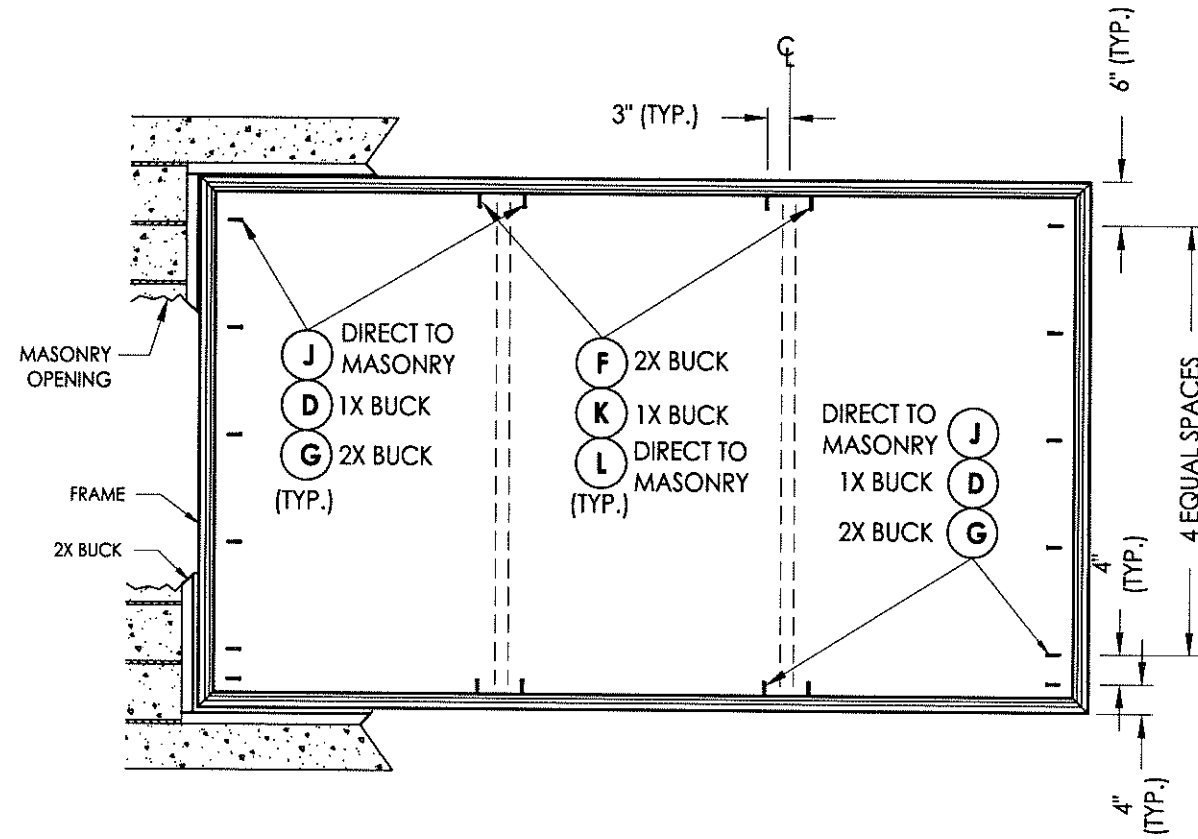
NO.	DATE	BY

DATE: 10/04/13  
SCALE: N.T.S.  
DWG. BY: JK  
CHK. BY: LFS  
DRAWING NO.: FL-16092.11  
SHEET 3 OF 5

Documents Prepared By:  
**RW** BUILDING CONSULTANTS, INC.  
P.O. Box 230 Valrico FL 33595  
Phone No.: 813.659.9197  
Florida Board of Professional Engineers  
Certificate of Authorization No. 9813  
1700 10.23.13  
Lyndon F. Schmidt, P.E. No. 43409



**BUCK ANCHORING**



**FRAME ANCHORING**

**CONCRETE ANCHOR NOTES:**

1. Substitution of equal concrete anchors from a different supplier may have different edge distance and center distance requirements.
2. Concrete anchor locations at the corners may be adjusted to maintain the min. edge distance to mortar joints. If concrete anchor locations noted as "MAX. ON CENTER" must be adjusted to maintain the min. edge distance to mortar joints, additional concrete anchors may be required to ensure the "MAX. ON CENTER" dimensions are not exceeded.
3. Concrete anchor table:

ANCHOR TYPE	ANCHOR SIZE	MIN. EMBEDMENT	MIN. CLEARANCE TO MASONRY EDGE	MIN. CLEARANCE TO ADJACENT ANCHOR
ITW	1/4"	1-1/4"	2-1/2"	3"
ELCO	1/4"	1-1/4"	1"	4"

Documents Prepared By:  
**RW** BUILDING CONSULTANTS, INC.  
 P.O. Box 230 Valrico FL 33595  
 Phone No.: 813.659.9197  
 Florida Board of Professional Engineers  
 Certificate Of Authorization No. 9813  
*LFS* 10.23.13  
 Lyndon F. Schmidt, P.E. No. 43409

PRODUCT: 7700/9900 SERIES  
 1/3-1/3-1/3  
 PART OR ASSEMBLY:  
 BUCK AND FRAME ANCHORING

NO.	DATE	BY	REVISIONS

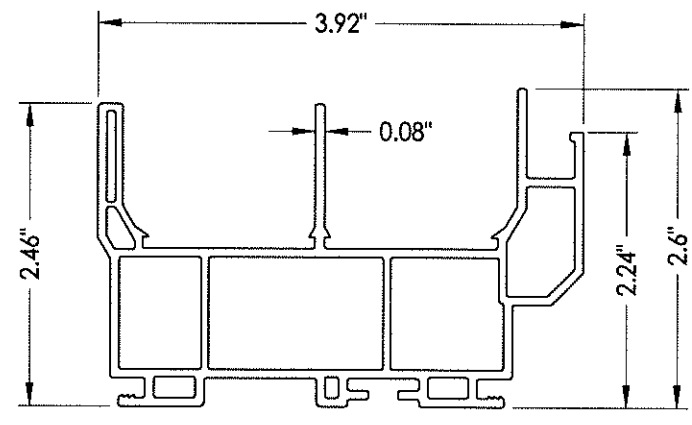
DATE: 10/04/13  
 SCALE: N.T.S.  
 DWG. BY: JK  
 CHK. BY: LFS  
 DRAWING NO.: FL-16092.11  
 SHEET 4 OF 5



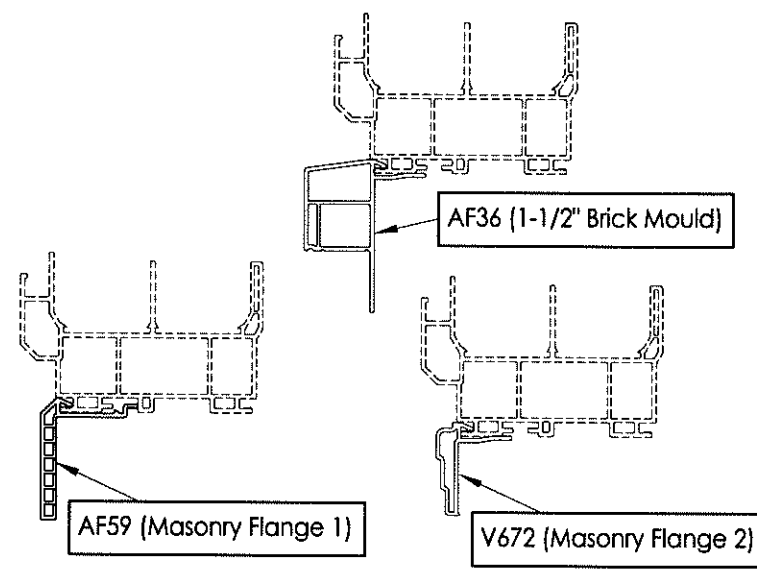
R:\A - Projects\Project Folders\Proj 1601 - 1700\PF 1679\Horizontal Slider\FL-16092.11.dwg, 5.3

BILL OF MATERIALS		
ITEM #	DESCRIPTION	MATERIAL
A	1X BUCK SG >= 0.42	WOOD
B	2X BUCK SG >= 0.42	WOOD
C	1/4" MAX. SHIM SPACE	-
D	1/4" X 2-3/4" PFH ELCO OR ITW CONCRETE SCREW	STEEL
E	MASONRY - 3,192 PSI MIN. CONCRETE CONFORMING TO ACI 301 OR HOLLOW BLOCK CONFORMING TO ASTM C90	CONCRETE
F	#8 X 3" PFH WOOD SCREW	STEEL
G	#8 X 2" PPH WOOD SCREW	STEEL
J	1/4" X 2-1/4" PFH ELCO OR ITW CONCRETE SCREW	STEEL
K	1/4" X 4" PFH ELCO OR ITW CONCRETE SCREW	STEEL
L	1/4" X 3-1/4" PFH ELCO OR ITW CONCRETE SCREW	STEEL
1	FRAME*	PVC
2	SLIDER PULL STILE*	PVC
3	LOCK STILE*	PVC
4	KEEPER STILE*	PVC
5	GLAZING BEAD*	PVC
6	SLIDER COMMON RAIL*	PVC
7	METAL ROLLERS w/ PLASTIC HOUSING	-
8	WEATHERSTRIP (0.230")	-
9	WEATHERSTRIP (0.380")	-
11	SILL TRACK	ALUM
15	REINFORCEMENT (6005 - T5)	ALUM
16	REINFORCEMENT (Hot Dipped Galv G90)	STEEL
17	#8 X 3/4" PFH WOOD SCREW	STEEL
18	#8 X 1-1/4" PFH SMS	STEEL
19	LOWER FLANKER STOP (2991C)	NYLON
20	UPPER FLANKER STOP (2991B)	NYLON

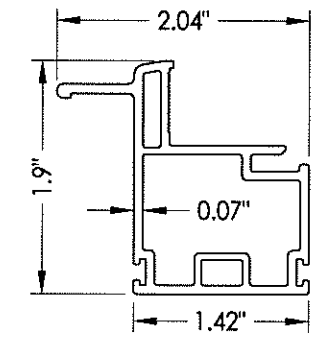
\* THE APPROVED WHITE RIGID PVC EXTERIOR EXTRUSIONS FOR WINDOWS ARE TO BE PRODUCED BY EXTRUDERS LICENSEES IN "AAMA CERTIFICATION PROGRAMS FOR RIGID PVC EXTRUSIONS".



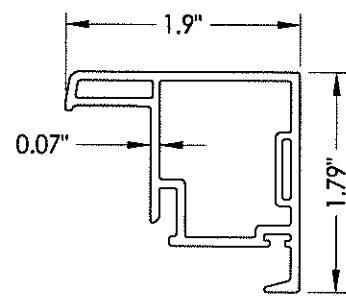
1 FRAME



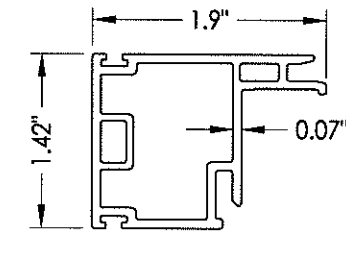
OPTIONAL COSMETIC FLANGES



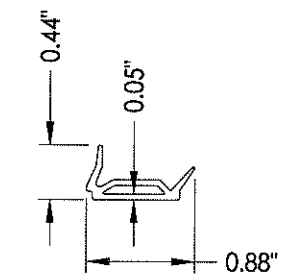
2 SLIDER PULL STILE



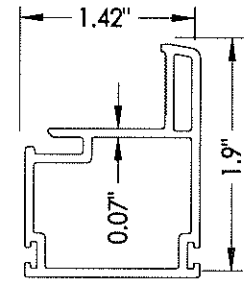
3 LOCK STILE



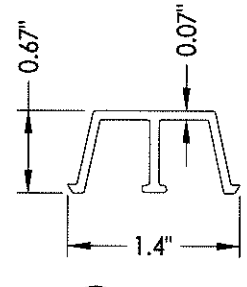
4 KEEPER STILE



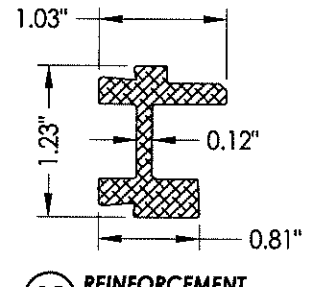
5 GLAZING BEAD



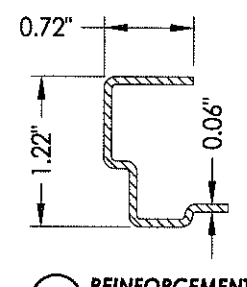
6 SLIDER COMMON RAIL



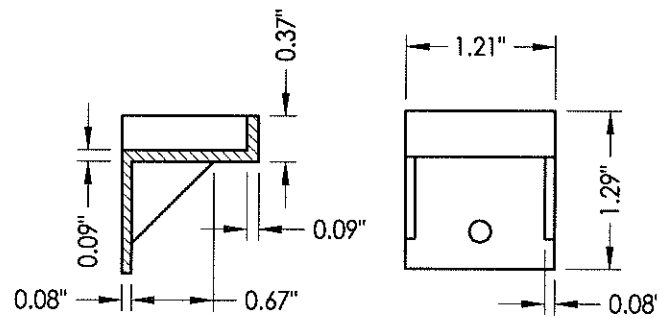
11 SILL TRACK



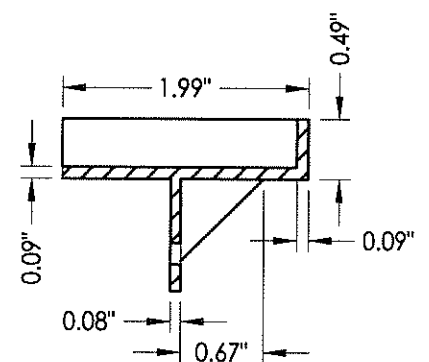
15 REINFORCEMENT Lock Stile



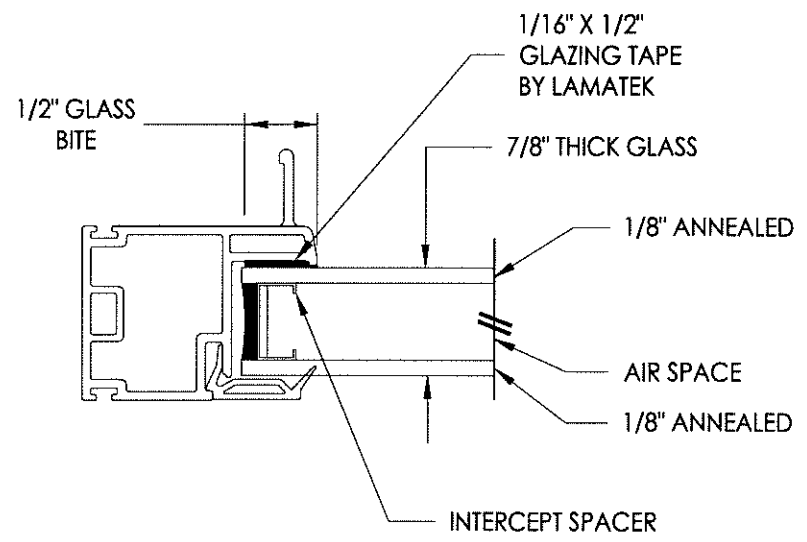
16 REINFORCEMENT Meeting Stile



19 LOWER FLANKER STOP



20 UPPER FLANKER STOP



G1 GLAZING DETAIL

Documents Prepared By: **RW** BUILDING CONSULTANTS, INC.  
P.O. Box 230 Valrico FL 33595  
Phone No.: 813.659.9197  
Florida Board of Professional Engineers  
Certificate of Authorization No. 9813  
17-22-10-23.13  
Lyndon F. Schmidt, P.E. No. 43409

---

PRODUCT: 7700/9900 SERIES  
1/3-1/3-1/3

PART OR ASSEMBLY: BILL OF MATERIALS, COMPONENTS & GLAZING DETAILS

NO.	DATE	BY	REVISIONS

DATE: 10/04/13  
SCALE: N.T.S.  
DWG. BY: JK  
CHK. BY: LFS  
DRAWING NO.: FL-16092.11  
SHEET 5 OF 5

© 2013 R.W. BUILDING CONSULTANTS INC.