

WINCORE™

WINDOWS & DOORS

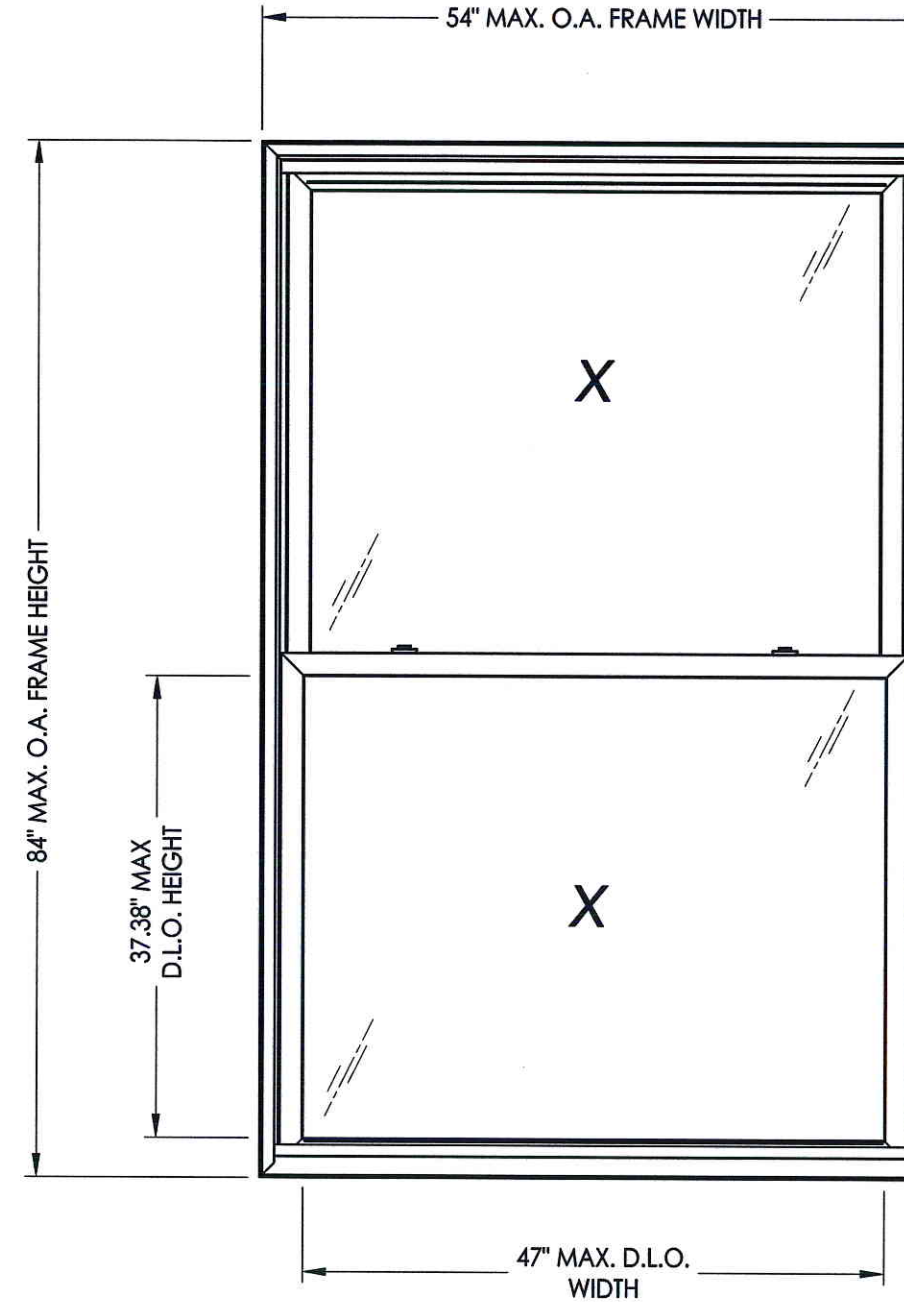
250 Staunton Turnpike, Parkersburg, WV 26104

8400 Series Vinyl Double Hung Window "NON-IMPACT"

GENERAL NOTES

1. This product has been evaluated and is in compliance with the 2010 Florida Building Code (FBC) structural requirements excluding the "High Velocity Hurricane Zone" (HVHZ).
2. Product anchors shall be as listed and spaced as shown on details. Anchor embedment to base material shall be beyond wall dressing or stucco.
3. When used in areas requiring wind borne debris protection this product is required to be protected with an impact resistant covering that complies with Section 1609.1.2 of the FBC.
4. For 2x stud framing construction, anchoring of these units shall be the same as that shown for 2x buck masonry construction.
5. Site conditions that deviate from the details of this drawing require further engineering analysis by a licensed engineer or registered architect.

TABLE OF CONTENTS	
SHEET#	DESCRIPTION
1	Typical elevations, design pressures and general notes
2	Horizontal cross sections
3	Vertical cross sections
4	Buck and frame anchoring
5	Components
6	Bill of materials, components & glazing details



MAX. FRAME DIMENSION	MAX. D.L.O. DIMENSION	GLASS TYPE	DESIGN PRESSURE (PSF)	
			POSITIVE	NEGATIVE
48.0" X 72.0"	41.0" X 31.38"	G1	+60.0	-65.0
54.0" X 84.0"	47.0" X 37.38"	G1	+50.0	-50.0
54.0" X 76.0"	47.0" X 33.38"	G2	+65.0	-70.0

Documents Prepared By:

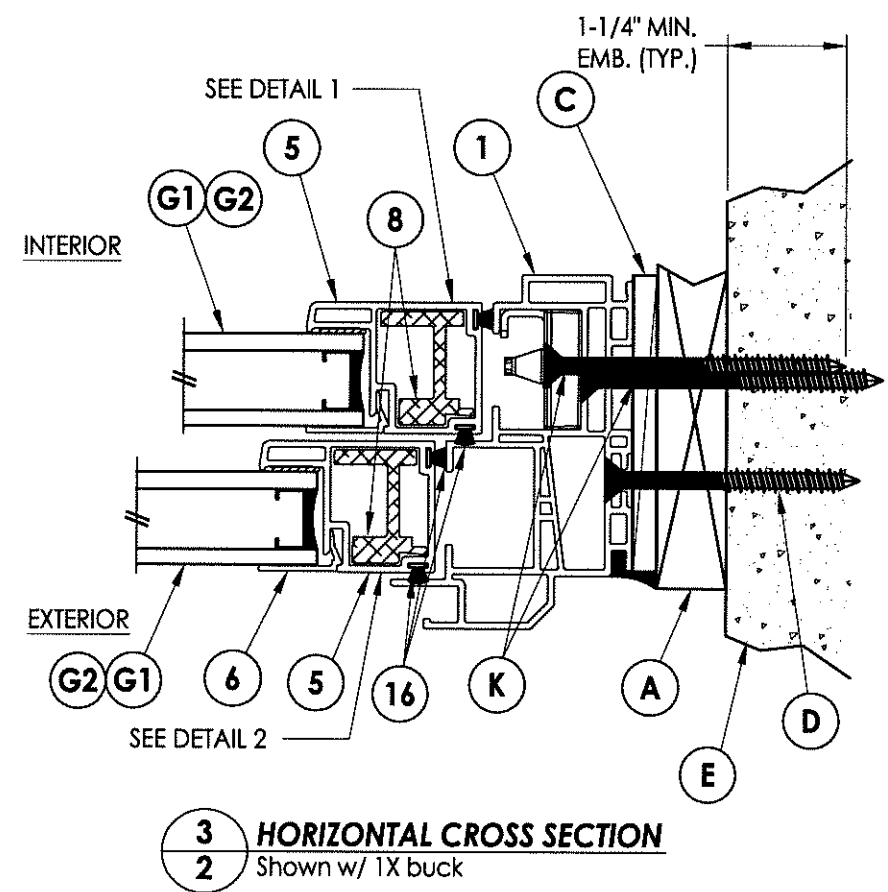
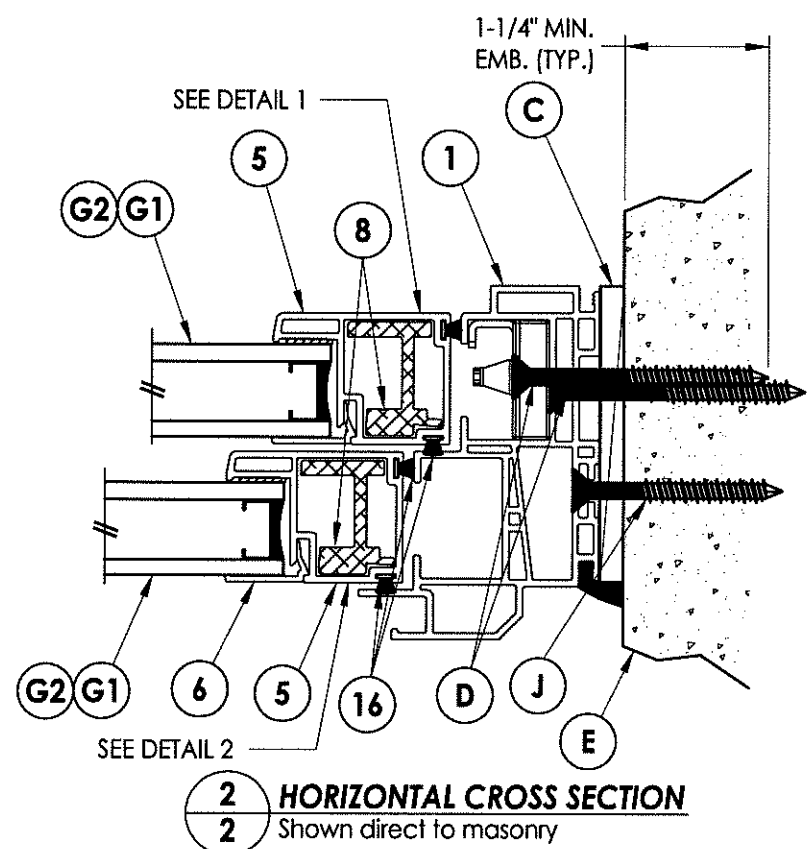
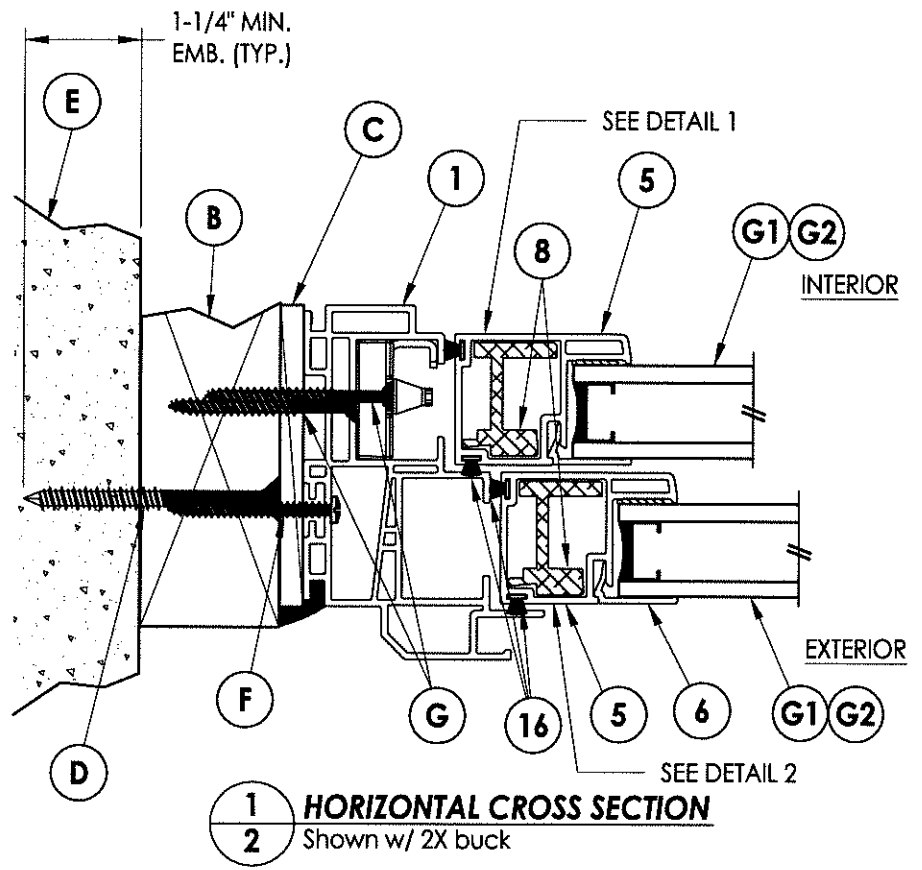
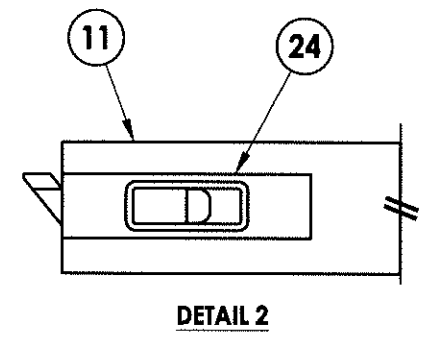
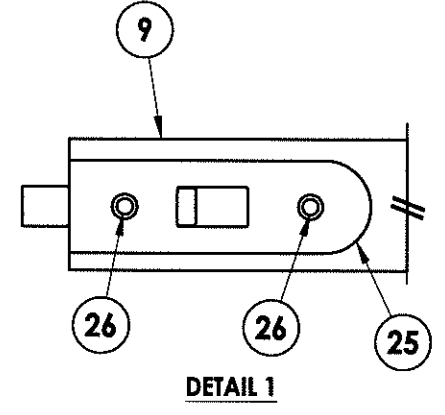
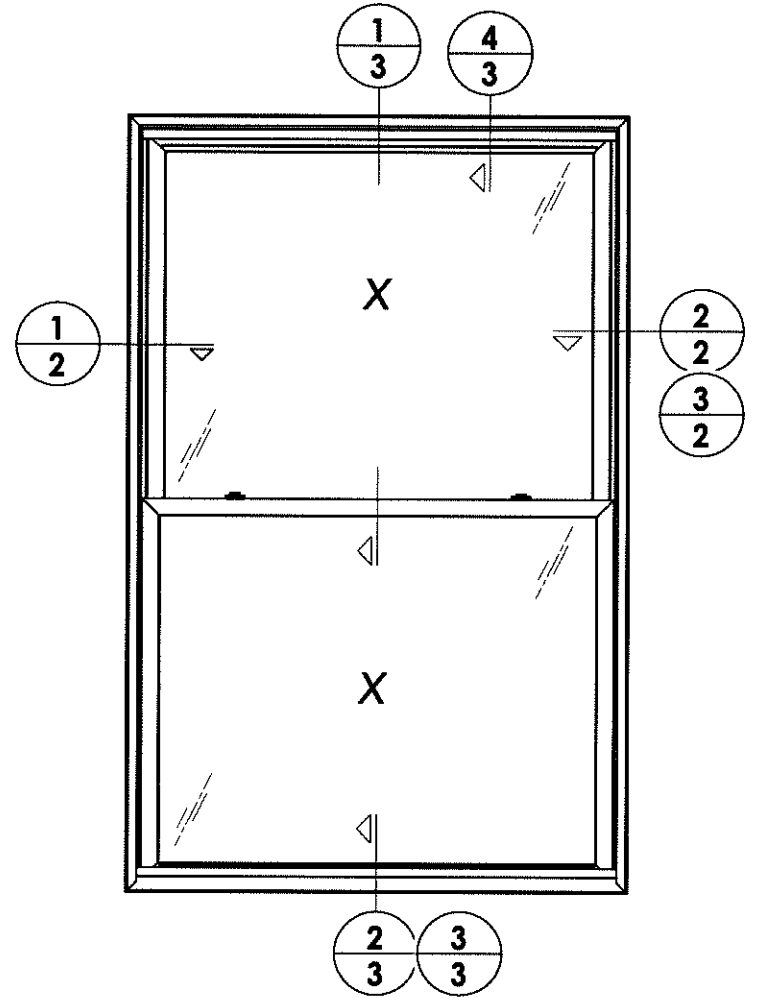
RW BUILDING CONSULTANTS, INC.
P.O. Box 230 Valrico FL 33595
Phone No.: 813.659.9197
Florida Board of Professional Engineers
Certificate Of Authorization No. 9813
LFS 5.3.12
Lyndon F. Schmidt, P.E. No. 43409

PRODUCT: 8400 SERIES Vinyl Double Hung Window
PART OR ASSEMBLY: TYPICAL ELEVATION, DESIGN PRESSURES & GENERAL NOTES

NO.	DATE	UPDATE FRAME SIZE/DP/GLZ	LFS	BY
1	4/02/13			

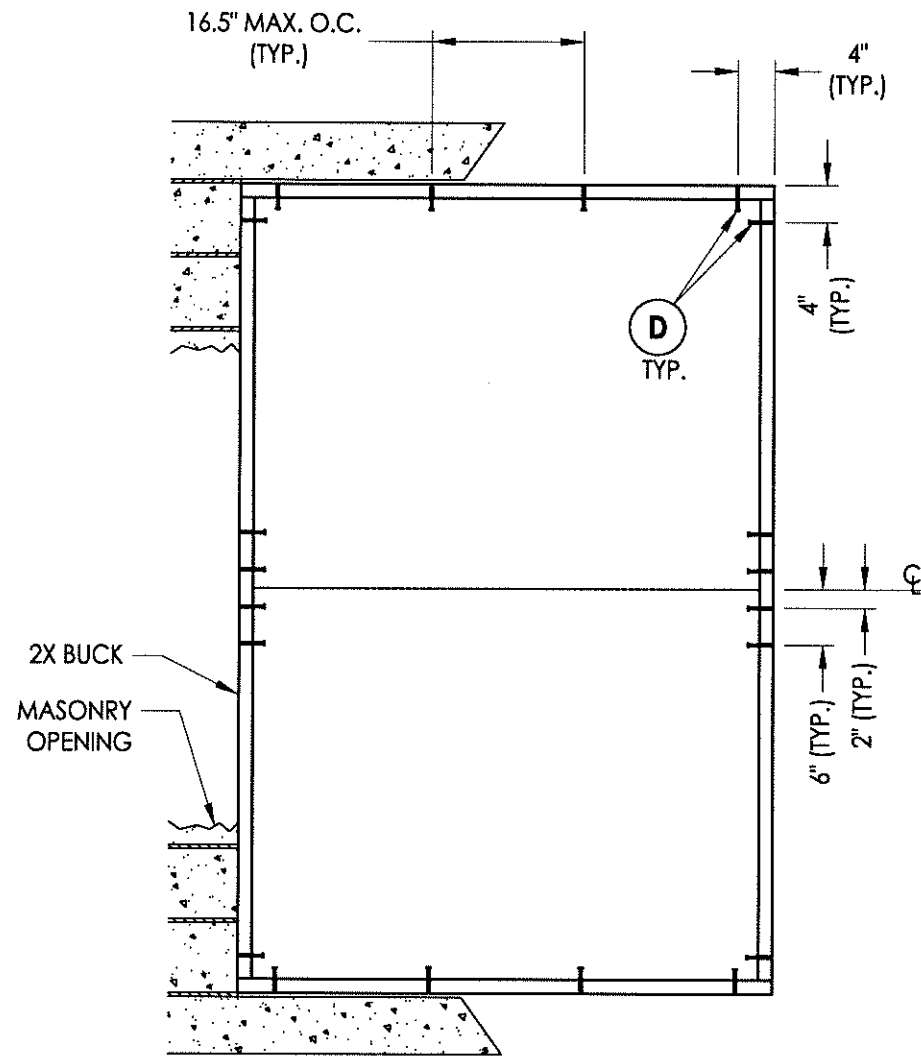
DATE: 8/2/12
SCALE: N.T.S.
DWG. BY: JK
CHK. BY: LFS
DRAWING NO.: FL-15819.1
SHEET 1 OF 6

R:\A - Projects\Project Folders\Proj 1601 - 1700\PF 1679\Double Hung FL-15819.dwg, 2.1

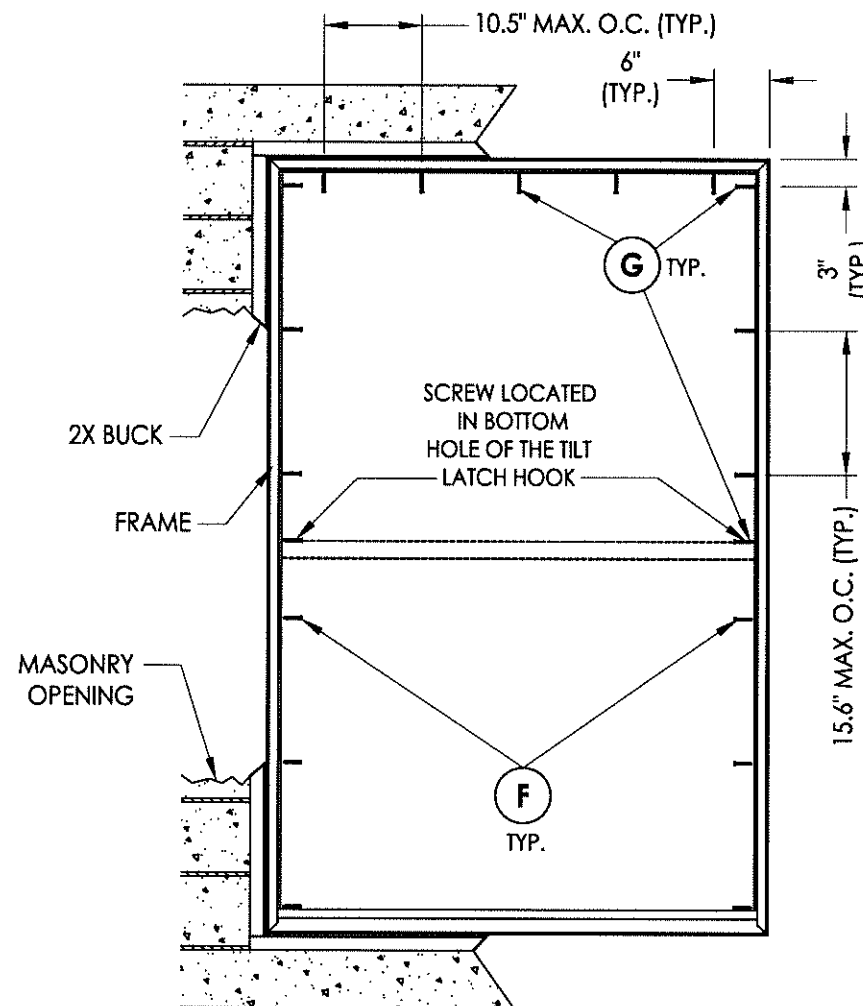


Documents Prepared By:		R.W. BUILDING CONSULTANTS, INC. P.O. Box 230 Valrico FL, 33595 Phone No.: 813.659.9197 Florida Board of Professional Engineers Certificate Of Authorization No. 9813 LFS 5.3.13 Lyndon F. Schmidt, P.E. No. 43409	
PRODUCT:	8400 SERIES Vinyl Double Hung Window	PART OR ASSEMBLY: HORIZONTAL CROSS SECTIONS	
NO.	DATE	UPDATE	FRAME SIZE/DP/GLZ
1	4/02/13		
REVISIONS		LFS	BY
DATE: 8/2/12			
SCALE: N.T.S.			
DWG. BY: JK			
CHK. BY: LFS			
DRAWING NO.: FL-15819.1			
SHEET 2 OF 6			

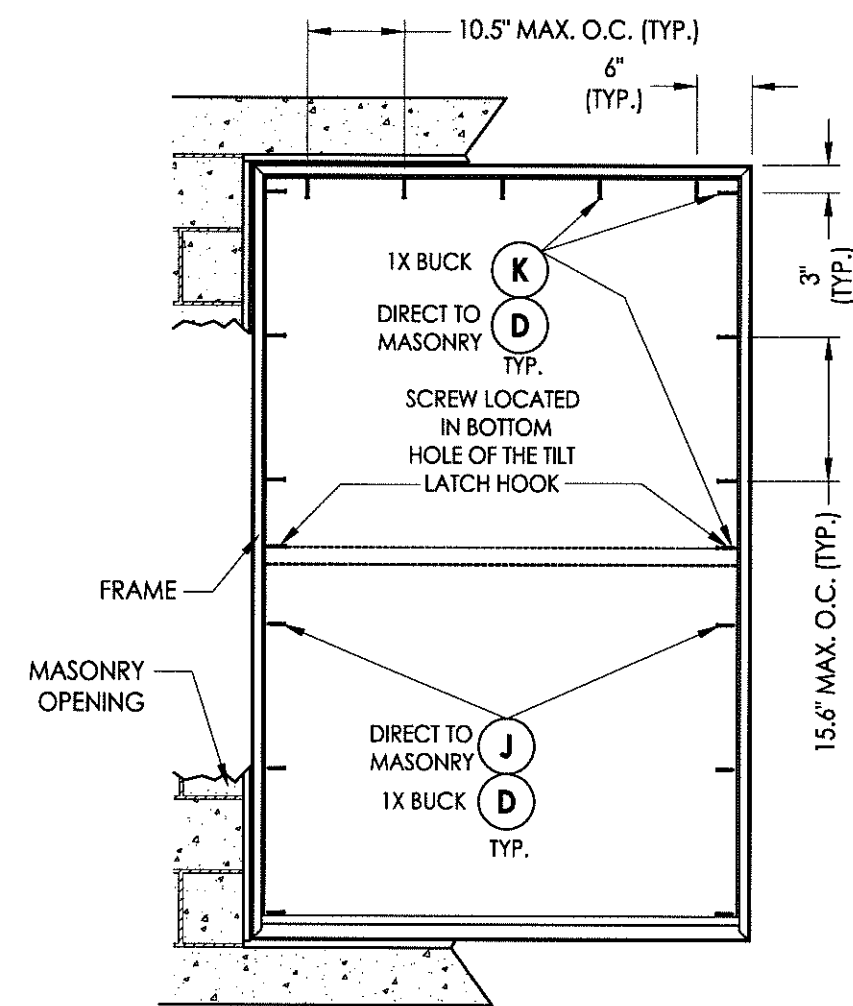
© 2012 R.W. BUILDING CONSULTANTS INC.



BUCK ANCHORING



FRAME ANCHORING
2X Buck



FRAME ANCHORING
1X Buck
Direct to masonry

CONCRETE ANCHOR NOTES:

1. Substitution of equal concrete anchors from a different supplier may have different edge distance and center distance requirements.
2. Concrete anchor locations at the corners may be adjusted to maintain the min. edge distance to mortar joints. If concrete anchor locations noted as "MAX. ON CENTER" must be adjusted to maintain the min. edge distance to mortar joints, additional concrete anchors may be required to ensure the "MAX. ON CENTER" dimensions are not exceeded.
3. Concrete anchor table:

ANCHOR TYPE	ANCHOR SIZE	MIN. EMBEDMENT	MIN. CLEARANCE TO MASONRY EDGE	MIN. CLEARANCE TO ADJACENT ANCHOR
ITW	1/4"	1-1/4"	2-1/2"	3"
ELCO	1/4"	1-1/4"	1"	4"

NOTE: Frame anchoring screws are located as follows:
Interior track: above the mid-rail
Exterior track: below the mid-rail

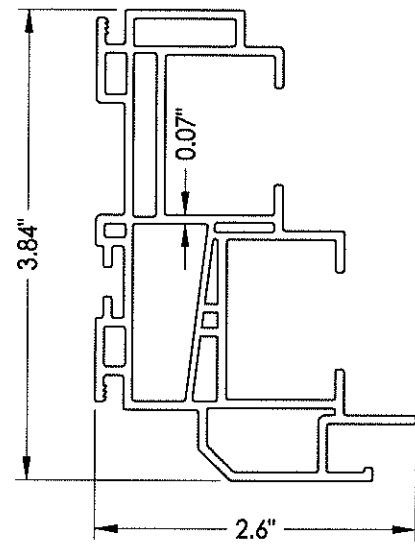
Documents Prepared By:

RW BUILDING CONSULTANTS, INC.
P.O. Box 230 Valrico FL 33595
Phone No.: 813.659.9197
Florida Board of Professional Engineers
Certificate Of Authorization No. 9813
6/28/5.3-13
Lyndon F. Schmidt, P.E. No. 43409

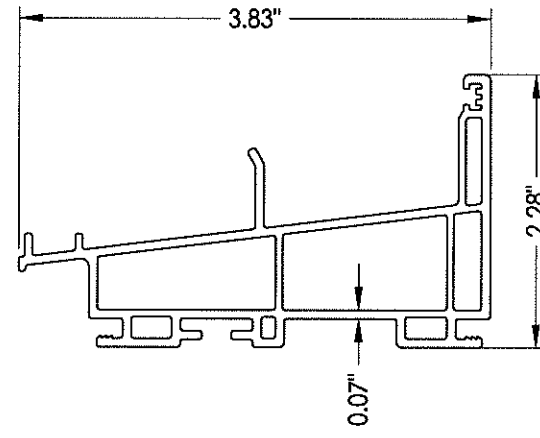
PRODUCT: 8400 SERIES Vinyl Double Hung Window
PART OR ASSEMBLY: BUCK AND FRAME ANCHORING

NO.	DATE	UPDATE	FRAME SIZE/DP/GLZ	LFS	BY
1	4/02/13				

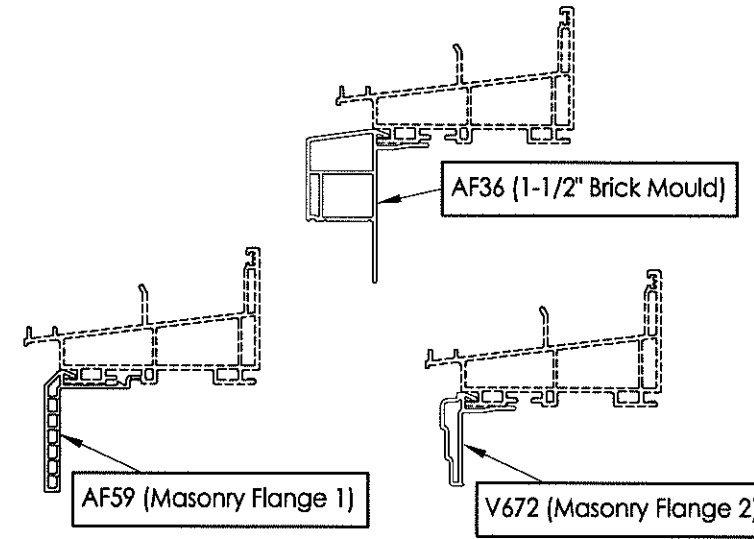
DATE: 8/2/12
SCALE: N.T.S.
DWG. BY: JK
CHK. BY: LFS
DRAWING NO.: FL-15819.1
SHEET 4 OF 6



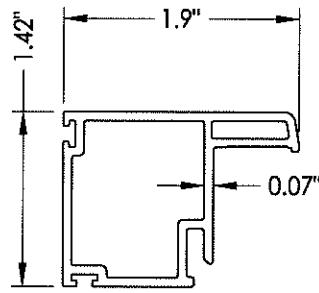
1 FRAME HEAD & JAMB



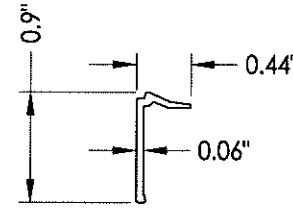
2 SILL



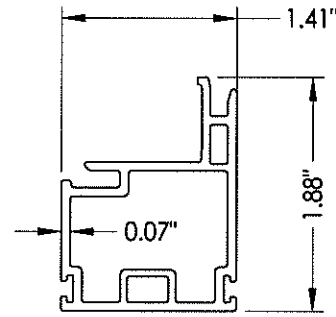
OPTIONAL COSMETIC FLANGES



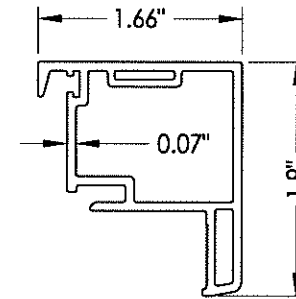
5 SASH STILE



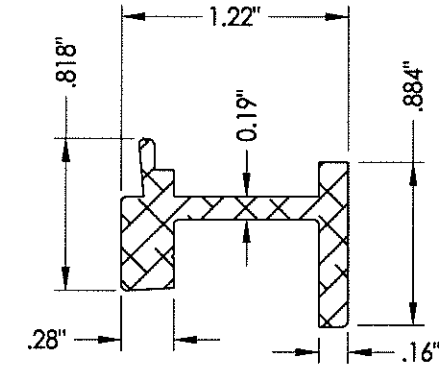
6 GLAZING BEAD



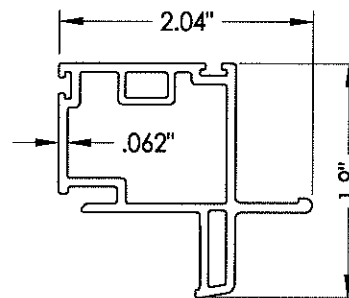
7 KEEPER RAIL
Upper Sash



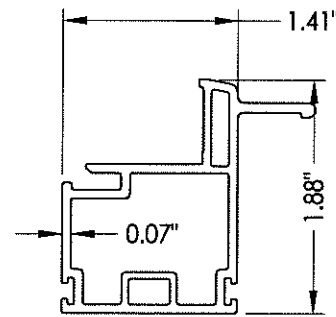
9 LOCK RAIL
Lower Sash



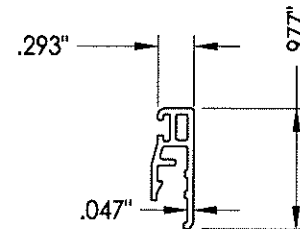
8 REINFORCEMENT
Alum.



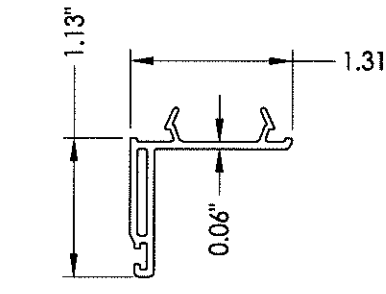
11 TOP RAIL
Upper Sash



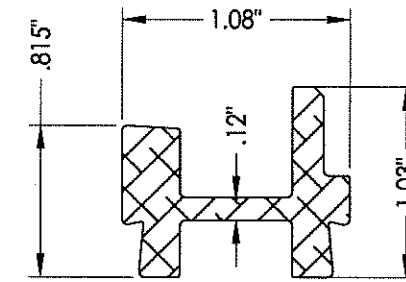
12 BOTTOM RAIL
Lower Sash



14 SILL DAM EXTENDER



19 HEAD ADAPTER



18 REINFORCEMENT
Alum.

Documents Prepared By:

RW BUILDING CONSULTANTS, INC.
P.O. Box 230 Valrico FL 33595
Phone No.: 813.659.9197
Florida Board of Professional Engineers
Certificate Of Authorization No. 9813
LFS 5.3.13
Lyndon F. Schmidt, P.E. No. 43409

PRODUCT: 8400 SERIES
Vinyl Double Hung Window

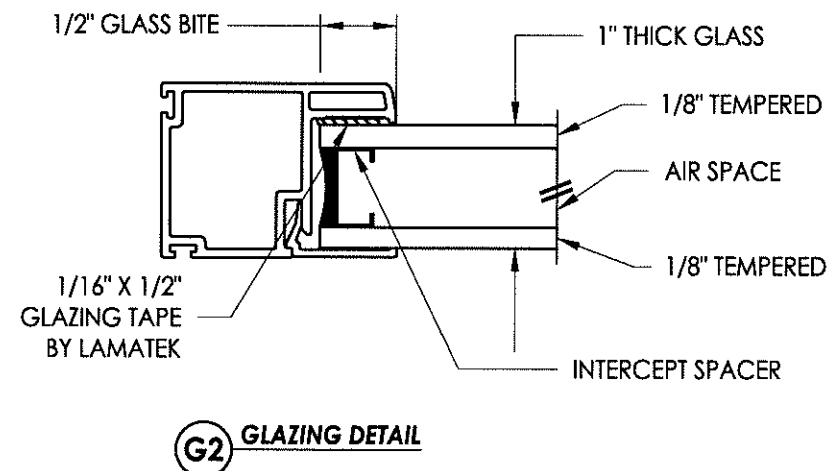
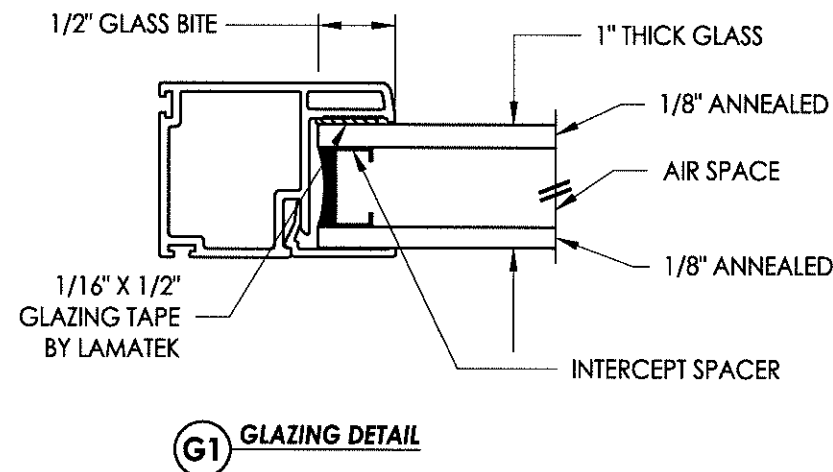
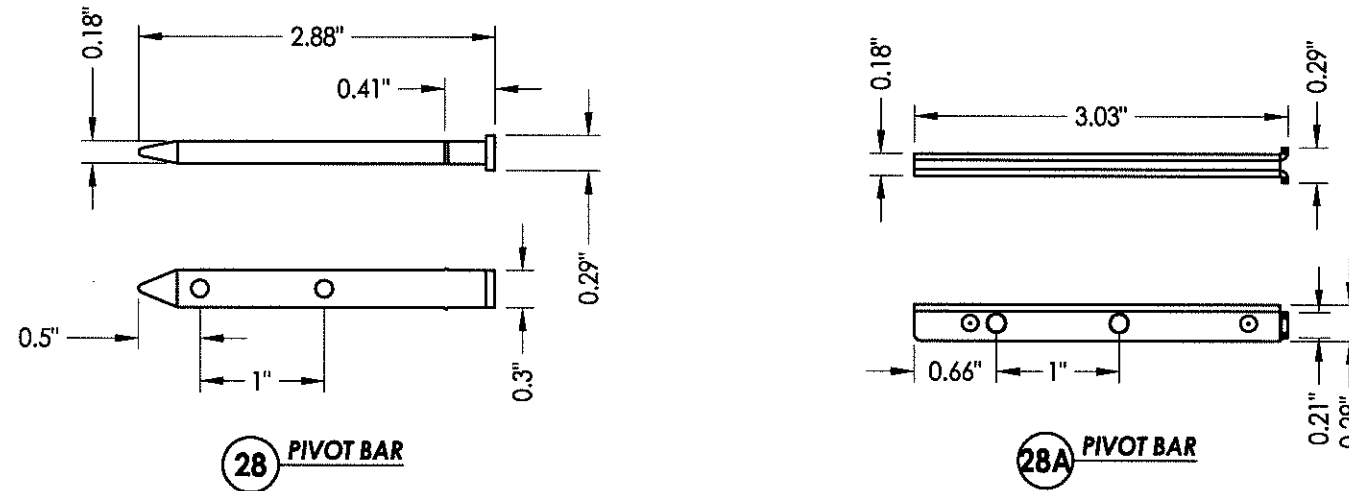
PART OR ASSEMBLY: COMPONENTS

REVISIONS	
NO.	DATE
1	4/02/13
	UPDATE FRAME SIZE/DP/GLZ
	LFS
	BY

DATE: 8/2/12
SCALE: N.T.S.
DWG. BY: JK
CHK. BY: LFS
DRAWING NO.: FL-15819.1
SHEET 5 OF 6

BILL OF MATERIALS		
ITEM #	DESCRIPTION	MATERIAL
A	1X BUCK SG >= 0.42	WOOD
B	2X BUCK SG >= 0.42	WOOD
C	1/4" MAX. SHIM SPACE	-
D	1/4" X 2-3/4" PFH ELCO OR ITW CONCRETE SCREW	-
E	MASONRY - 3,192 PSI MIN. CONCRETE CONFORMING TO ACI 301 OR HOLLOW BLOCK CONFORMING TO ASTM C90	CONCRETE
F	#8 X 1-3/4" PPH WOOD SCREW	STEEL
G	#8 X 2" PPH WOOD SCREW	STEEL
J	1/4" X 2-1/4" PFH ELCO OR ITW CONCRETE SCREW	STEEL
K	1/4" X 3-1/4" PFH ELCO OR ITW CONCRETE SCREW	STEEL
1	FRAME JAMB*	PVC
2	SILL*	PVC
3	FRAME HEAD*	PVC
5	SASH STILE*	PVC
6	GLAZING BEAD*	PVC
7	KEEPER RAIL UPPER SASH*	PVC
8	REINFORCEMENT (6005-T5)	ALUM
9	LOCK RAIL LOWER SASH*	PVC
11	TOP RAIL UPPER SASH*	PVC
12	BOTTOM RAIL LOWER SASH*	PVC
14	SILL DAM EXTENDER*	PVC
16	WEATHERSTRIP ULTRA FAB .270 PILE - 270 -1875B	-
17	WEATHERSTRIP SILLBULB (AMESBURY 32690)	-
18	REINFORCEMENT (6005-T5)	ALUM
19	HEAD ADAPTER*	PVC
20	LOCK 8513 / 8845 LAWRENCE*	PVC
21	KEEPER 2700/214 LAWRENCE*	PVC
23	#6 X 1-1/2" PFH (VINYL LOCK SCREWS)	STEEL
24	TOP SASH TILT LATCH - ASHLAND*	PVC
25	BOTTOM SASH IMPACT TILT LATCH - ASHLAND	-
26	#8 X 1" PFH TEK SCREW	STEEL
28	PIVOT BAR - CALDWELL	-
28A	PIVOT BAR - STAINLESS STEEL OPTION	-
29	#8 X 1/2" SELF TAPPING PPH SMS	STEEL

* THE APPROVED WHITE RIGID PVC EXTERIOR EXTRUSIONS FOR WINDOWS ARE TO BE PRODUCED BY EXTRUDERS LICENSEES IN "AAMA CERTIFICATION PROGRAMS FOR RIGID PVC EXTRUSIONS".



Documents Prepared By:
R.W. BUILDING CONSULTANTS, INC.
 P.O. Box 230 Valrico FL 33595
 Phone No.: 813.659.9197
 Florida Board of Professional Engineers
 Certificate of Authorization No. 9813
 Lyndon F. Schmidt, P.E. No. 43409

PRODUCT: 8400 SERIES Vinyl Double Hung Window
 PART OR ASSEMBLY: BILL OF MATERIALS COMPONENTS & GLAZING DETAILS

NO.	DATE	UPDATE	FRAME	SIZE	DP	GLZ	LFS	BY
1	4/02/13							

DATE: 8/2/12
 SCALE: N.T.S.
 DWG. BY: JK
 CHK. BY: LFS
 DRAWING NO.: FL-15819.1
 SHEET 6 OF 6