

WINCORE™

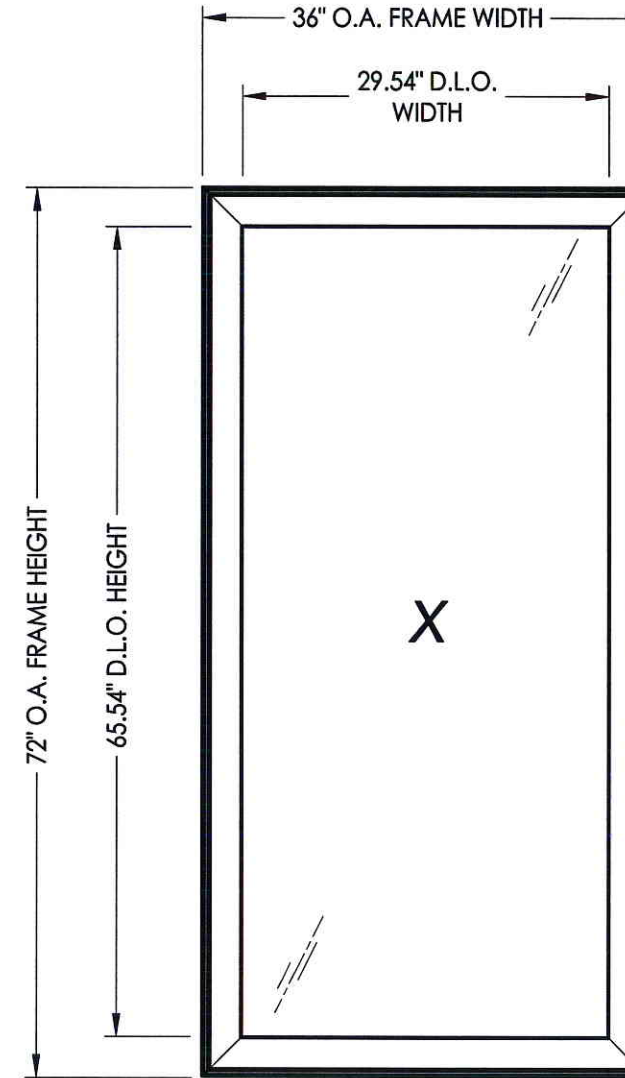
WINDOWS & DOORS

250 Staunton Turnpike, Parkersburg, WV 26104

8400 Series Vinyl Outswing Casement Window "NON-IMPACT"

GENERAL NOTES

1. This product has been evaluated and is in compliance with the 2010 Florida Building Code (FBC) structural requirements excluding the "High Velocity Hurricane Zone" (HVHZ).
2. Product anchors shall be as listed and spaced as shown on details. Anchor embedment to base material shall be beyond wall dressing or stucco.
3. When used in areas requiring wind borne debris protection this product is required to be protected with an impact resistant covering that complies with Section 1609.1.2 of the FBC.
4. For 2x stud framing construction, anchoring of these units shall be the same as that shown for 2x buck masonry construction.
5. Site conditions that deviate from the details of this drawing require further engineering analysis by a licensed engineer or registered architect.



MAX. FRAME DIMENSION	MAX. D.L.O. DIMENSION	GLASS TYPE	DESIGN PRESSURE (PSF)	
			POSITIVE	NEGATIVE
36.0" X 72.0"	29.54" X 65.54"	G1	+50.0	-50.0
		G2	+65.0	-65.0

TABLE OF CONTENTS	
SHEET#	DESCRIPTION
1	Typical elevations, design pressures and general notes
2	Horizontal & vertical cross sections
3	Horizontal & vertical cross sections
4	Buck and frame anchoring (Max D.P. = 50 psf)
5	Buck and frame anchoring (Max D.P. = 65 psf)
6	Bill of materials, components and glazing details

Documents Prepared By:

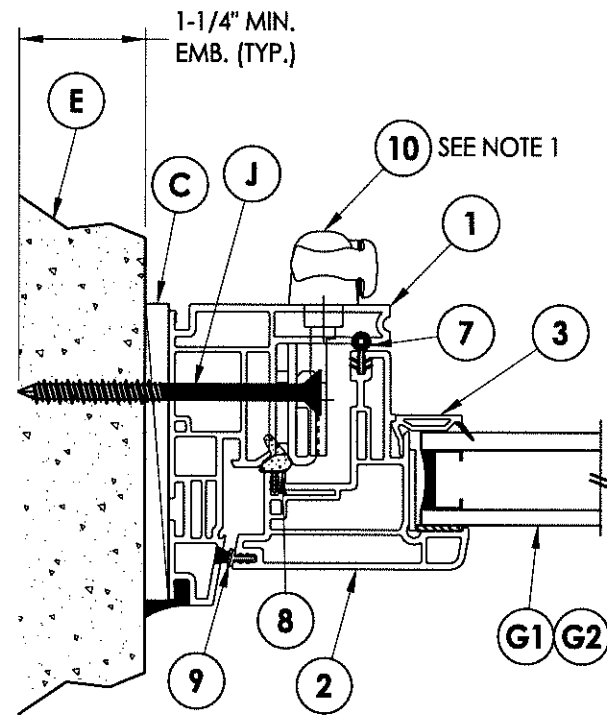
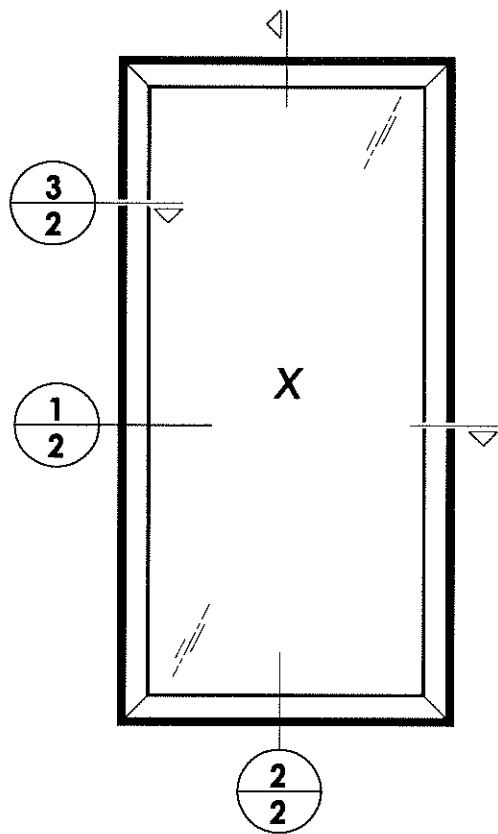
RW BUILDING CONSULTANTS, INC.
P.O. Box 230 Vairico FL. 33595
Phone No.: 813.659.9197
Florida Board of Professional Engineers
Certificate Of Authorization No. 9813
LFS *5.1.13*
Lyndon F. Schmidt, P.E. No. 43409

PRODUCT:	8400 SERIES Vinyl Outswing Casement Window	
PART OR ASSEMBLY:	TYPICAL ELEVATION, DESIGN PRESSURES & GENERAL NOTES	
NO.	DATE	BY
1	4/04/13	LFS
	UPDATED D.P./GLAZING	
		REVISIONS
DATE: 8/2/12		
SCALE: N.T.S.		
DWG. BY: JK		
CHK. BY: LFS		
DRAWING NO.: FL-15817.1		
SHEET 1 OF 6		

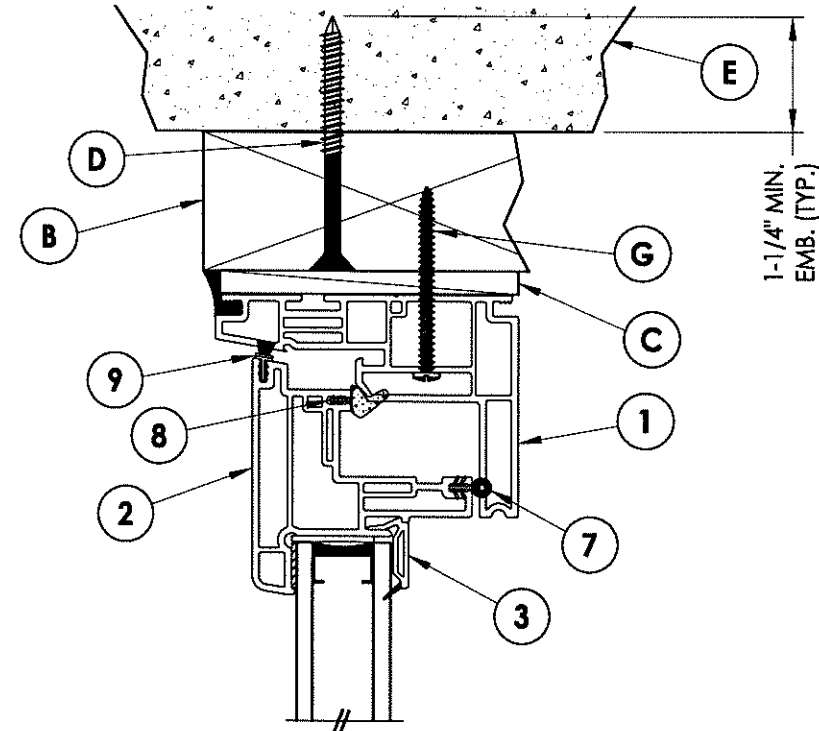
R:\A - Projects\Project Folders\Proj_1601 - 1700\PE 1677\D. RWBC Drawings\Case.Awn Window\FL-15817.dwg, 2.1

NOTE:

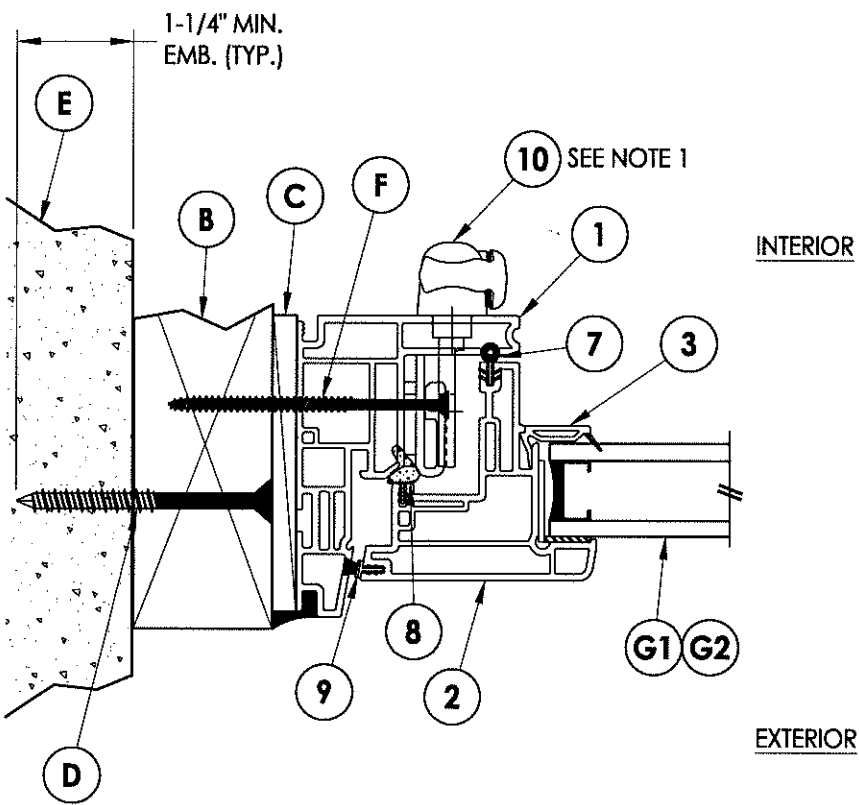
1. Multi-point locks/keepers (4) located at 4.125", 25.75", 46.5" and 66.375" from the bottom of sash.



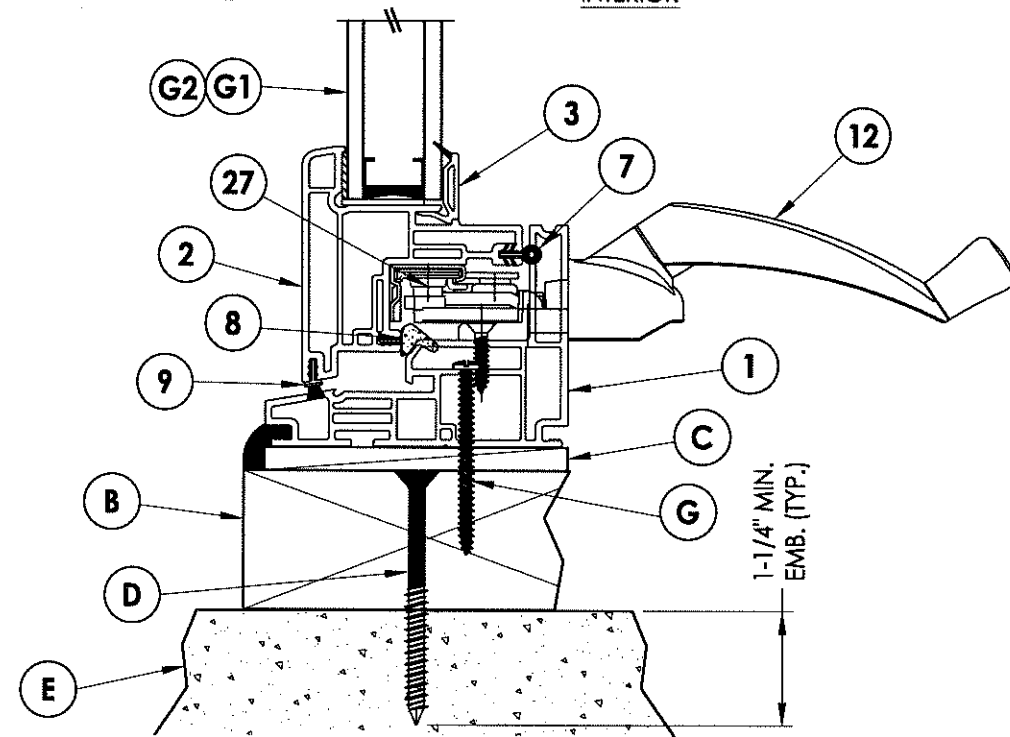
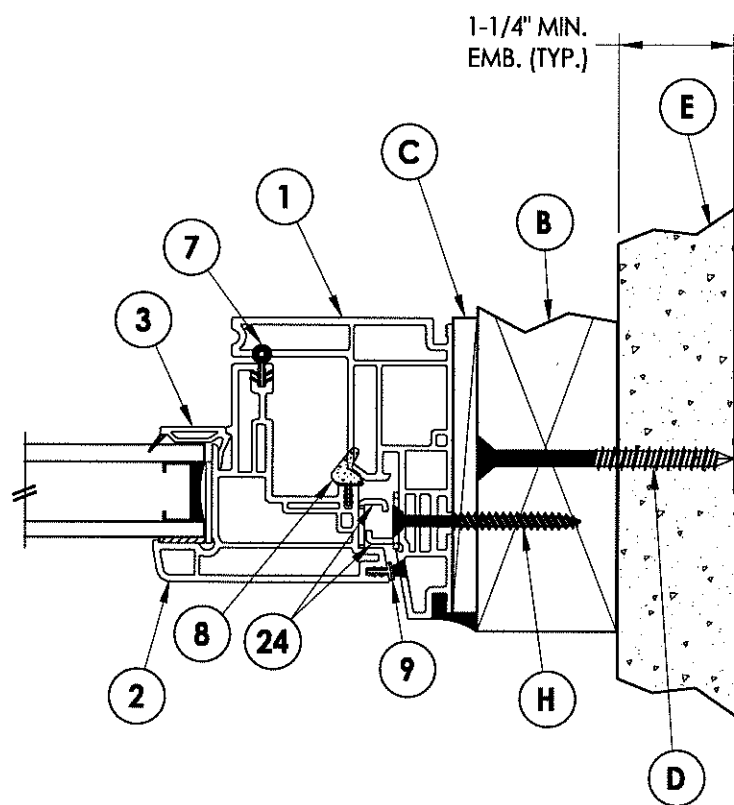
3 HORIZONTAL CROSS SECTION
2 Shown Direct to Masonry



2 VERTICAL CROSS SECTION
2 Shown w/ 2X Buck



1 HORIZONTAL CROSS SECTION
2 Shown w/ 2X Buck



Documents Prepared By:

RW BUILDING CONSULTANTS, INC.
P.O. Box 230 Valrico FL, 33595
Phone No.: 813.659.9197
Florida Board of Professional Engineers
Certificate Of Authorization No. 9813
ESL 5-1-13
Lyndon F. Schmidt, P.E. No. 43409

PRODUCT:
8400 SERIES
Vinyl Outswing Casement Window

PART OR ASSEMBLY:
HORIZONTAL & VERTICAL
CROSS SECTIONS

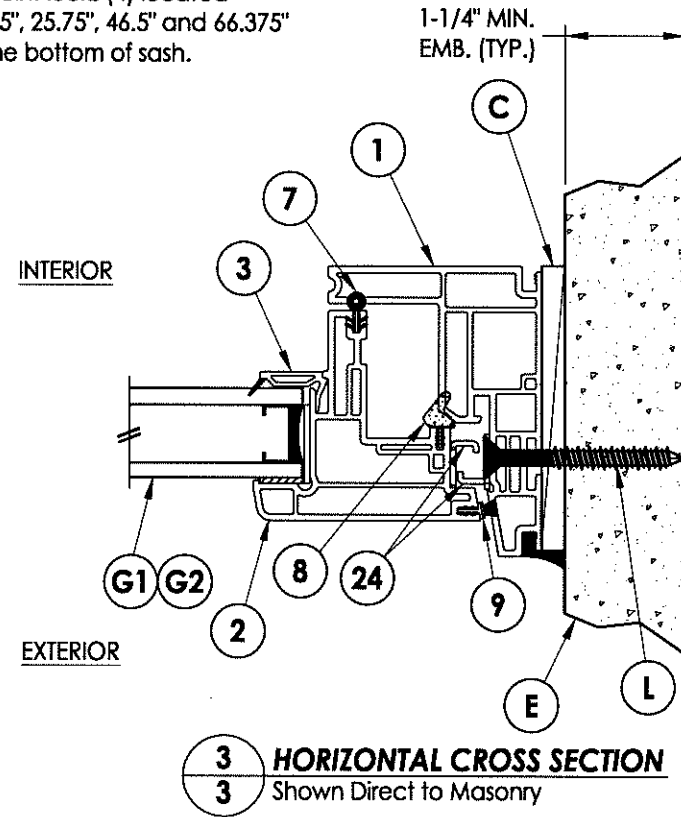
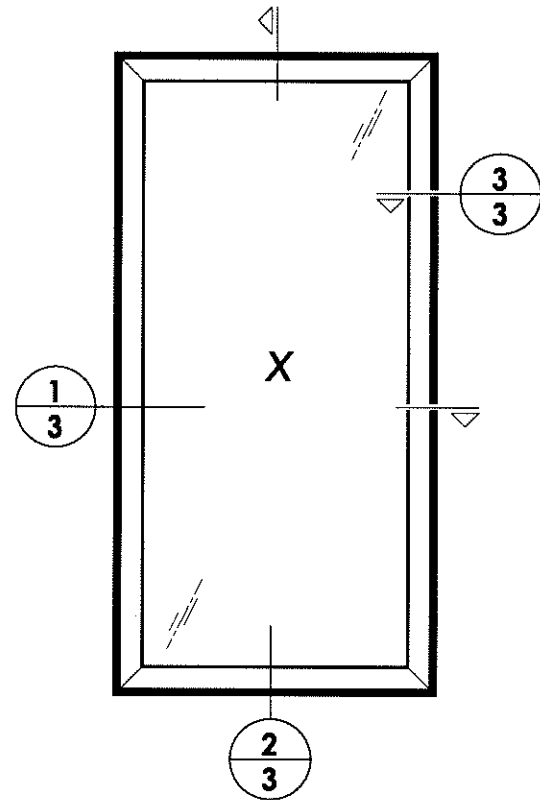
NO	DATE	REVISIONS	LFS	BY
1	4/04/13	UPDATED D.P./GLAZING		

DATE: 8/2/12
SCALE: N.T.S.
DWG. BY: JK
CHK. BY: LFS
DRAWING NO.: FL-15817.1

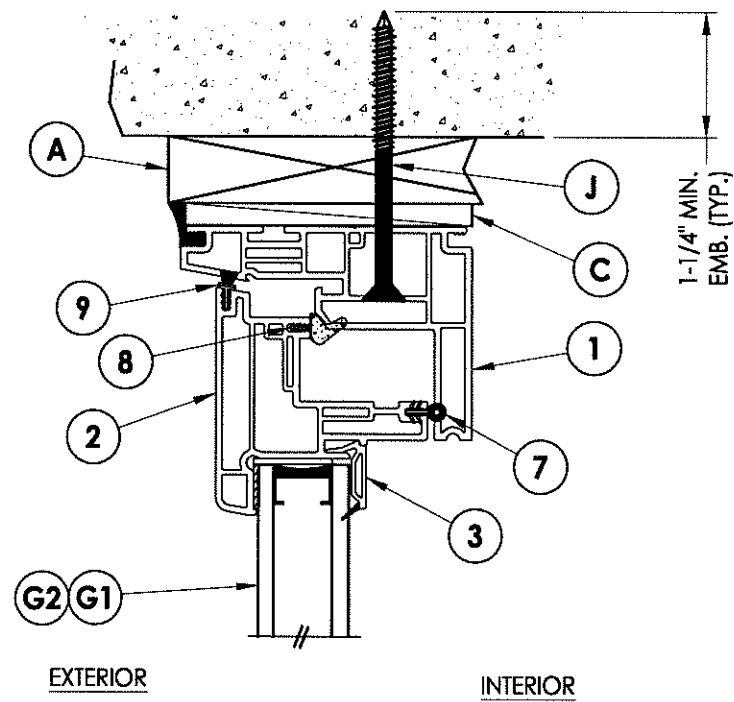
SHEET 2 OF 6

© 2012 R.W. BUILDING CONSULTANTS INC.

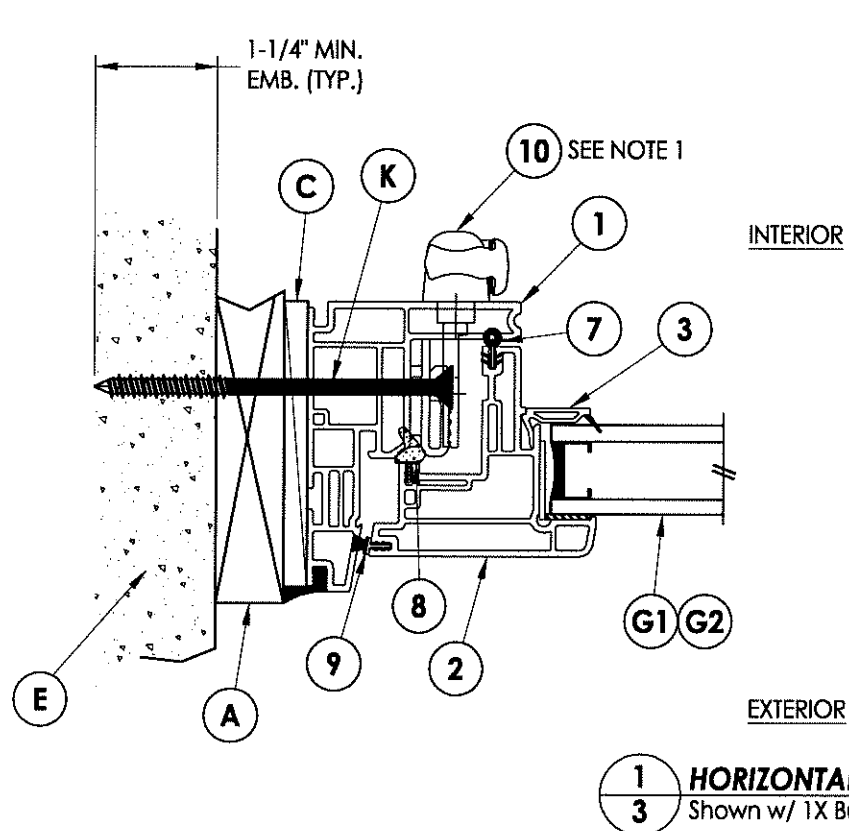
NOTE:
 1. Multi-point locks (4) located
 at 4.125", 25.75", 46.5" and 66.375"
 from the bottom of sash.



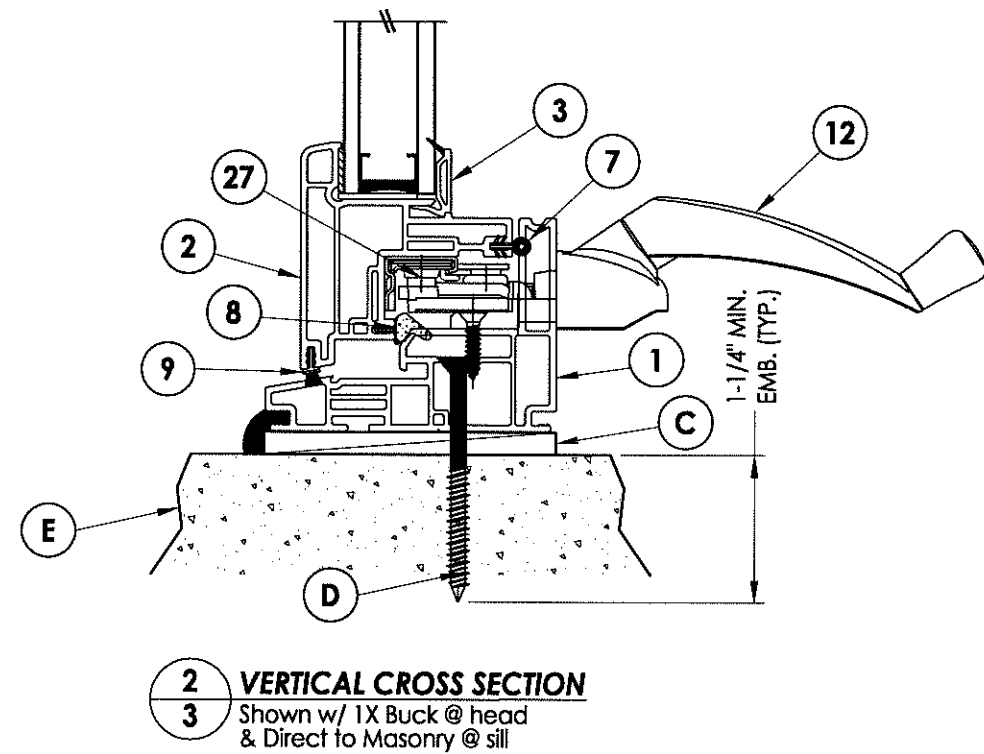
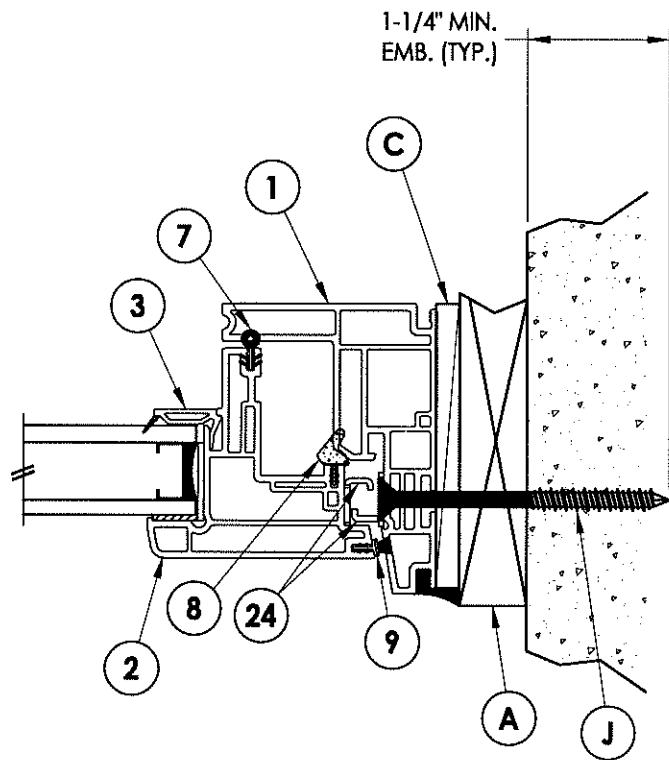
3 HORIZONTAL CROSS SECTION
 Shown Direct to Masonry



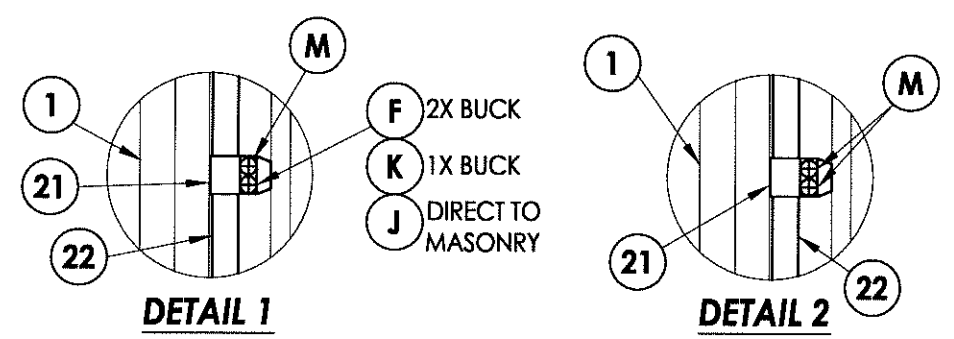
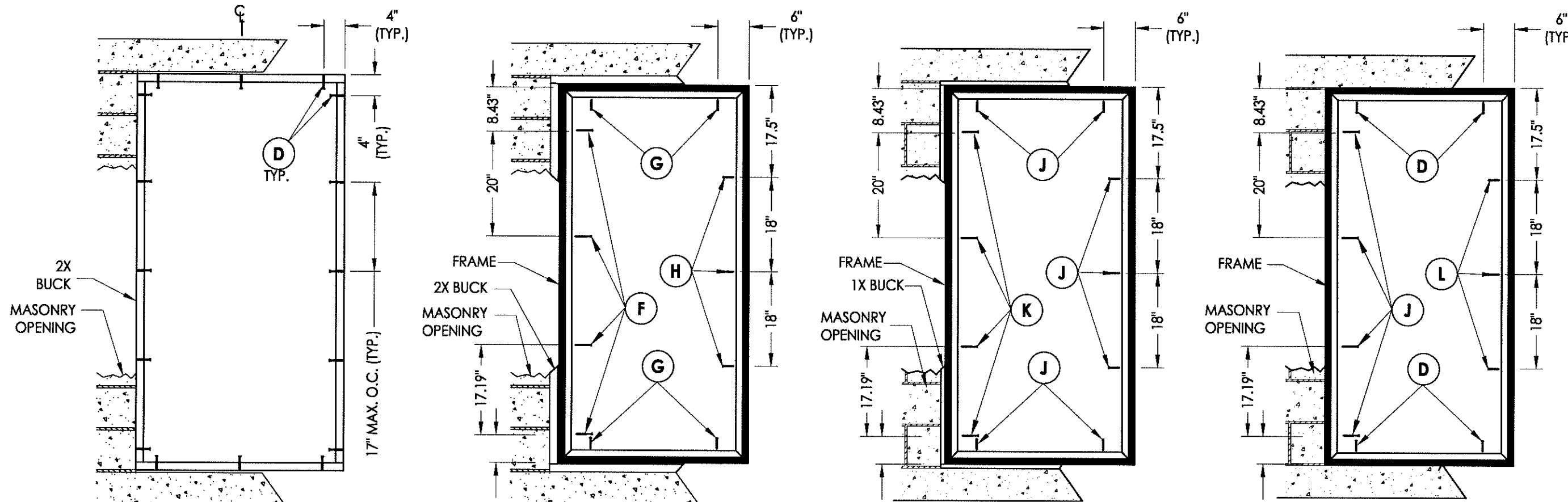
2 VERTICAL CROSS SECTION
 Shown w/ 1X Buck @ head
 & Direct to Masonry @ sill



1 HORIZONTAL CROSS SECTION
 Shown w/ 1X Buck



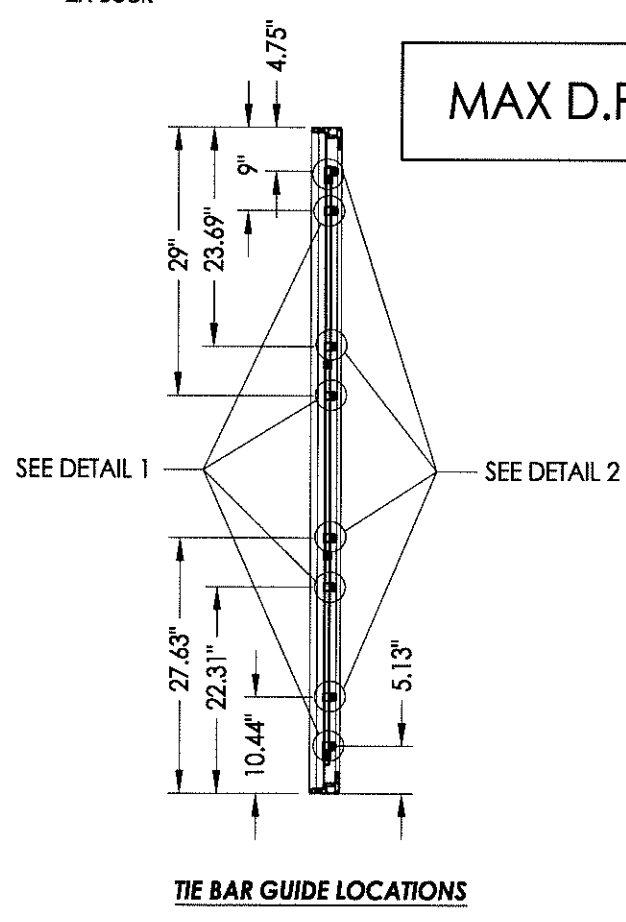
Documents Prepared By: RW BUILDING CONSULTANTS, INC. P.O. Box 230 Valrico FL 33595 Phone No.: 813.659.9197		Florida Board of Professional Engineers Certificate Of Authorization No. 9813 LF 5113 Lyndon F. Schmidt, P.E. No. 43409	
PRODUCT:	8400 SERIES Vinyl Outswing Casement Window	PART OR ASSEMBLY: HORIZONTAL & VERTICAL CROSS SECTIONS	
DATE:	8/2/12	NO.	1
SCALE:	N.T.S.	DATE	4/04/13
DWG. BY:	JK	UPDATED D.P./GLAZING	LFS
CHK. BY:	LFS	BY	
DRAWING NO.:	FL-15817.1	REVISIONS	
SHEET	3	OF 6	



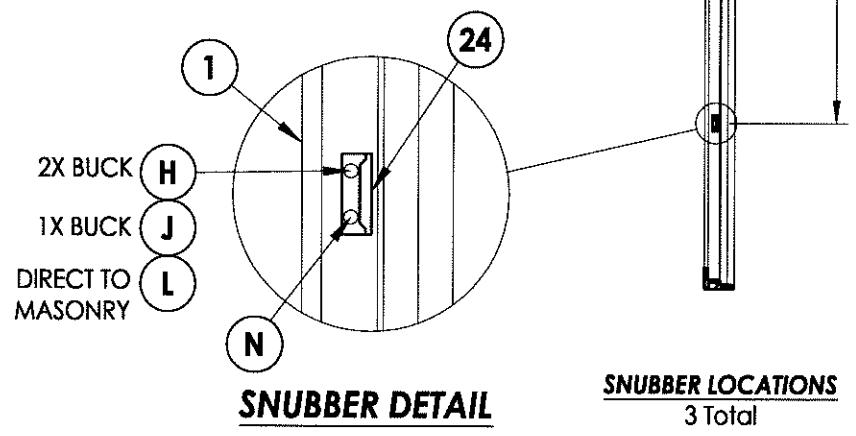
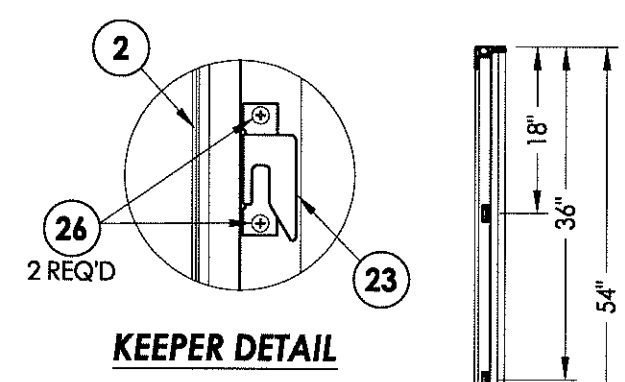
CONCRETE ANCHOR NOTES:

1. Substitution of equal concrete anchors from a different supplier may have different edge distance and center distance requirements.
2. Concrete anchor locations at the corners may be adjusted to maintain the min. edge distance to mortar joints. If concrete anchor locations noted as "MAX. ON CENTER" must be adjusted to maintain the min. edge distance to mortar joints, additional concrete anchors may be required to ensure the "MAX. ON CENTER" dimensions are not exceeded.
3. Concrete anchor table:

ANCHOR TYPE	ANCHOR SIZE	MIN. EMBEDMENT	MIN. CLEARANCE TO MASONRY EDGE	MIN. CLEARANCE TO ADJACENT ANCHOR
ITW	1/4"	1-1/4"	2-1/2"	3"
ELCO	1/4"	1-1/4"	1"	4"



MAX D.P. = 50 PSF

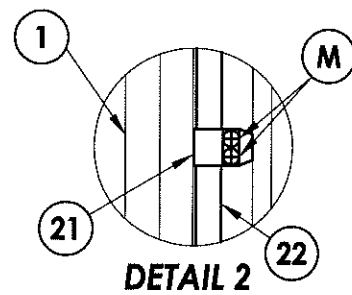
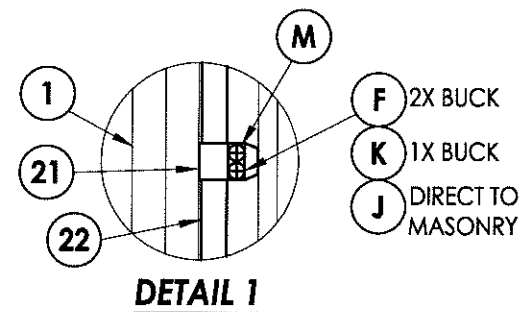


Documents Prepared By:
RW BUILDING CONSULTANTS, INC.
 P.O. Box 230 Valrico FL 33595
 Phone No.: 813.659.9197
 Florida Board of Professional Engineers
 Certificate Of Authorization No. 9813
LFS
 Lyndon F. Schmidt, P.E. No. 43409

PRODUCT: 8400 SERIES Vinyl Outswing Casement Window
 PART OR ASSEMBLY: BUCK AND FRAME ANCHORING (MAX D.P. = 50 PSF)

NO.	DATE	DESCRIPTION	LFS	BY
1	4/04/13	UPDATED D.P./GLAZING		

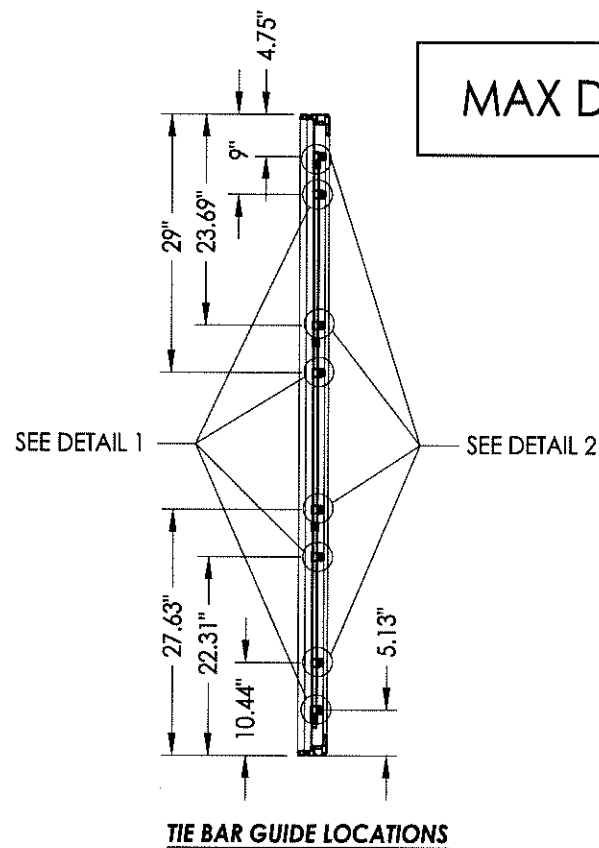
DATE: 8/2/12
 SCALE: N.T.S.
 DWG. BY: JK
 CHK. BY: LFS
 DRAWING NO.: FL-15817.1
 SHEET 4 OF 6



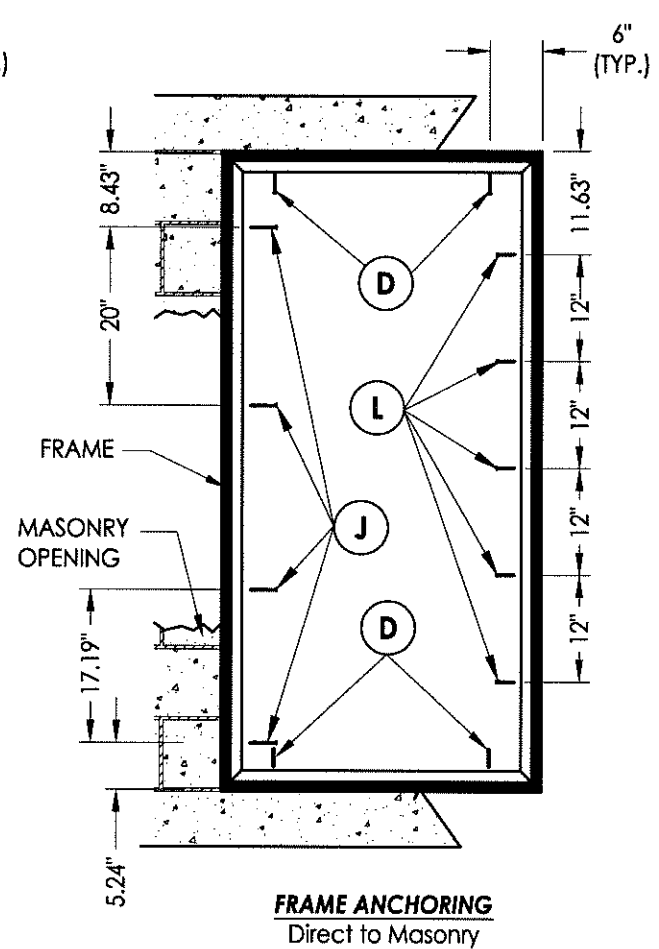
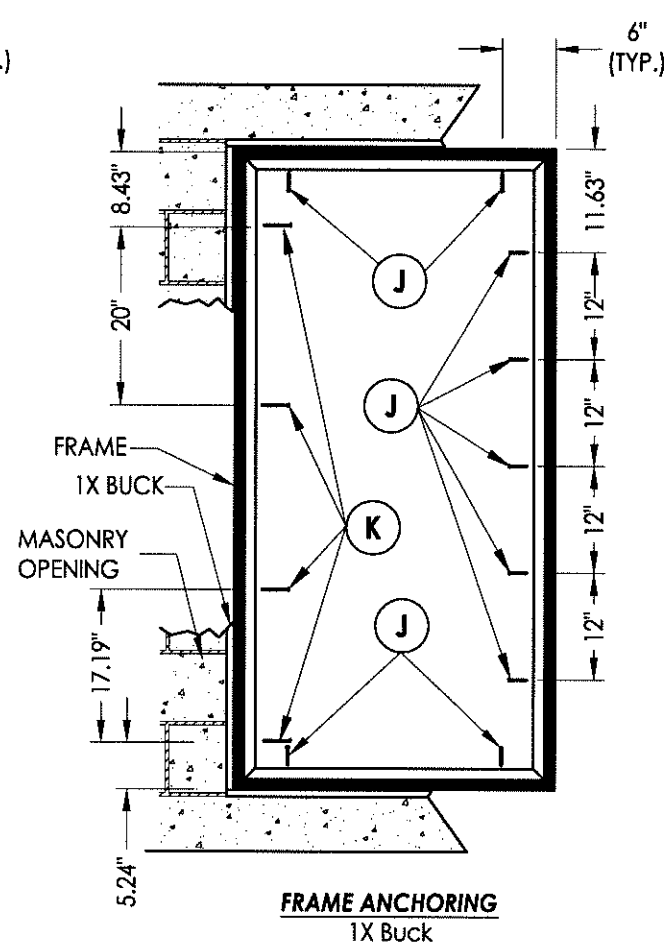
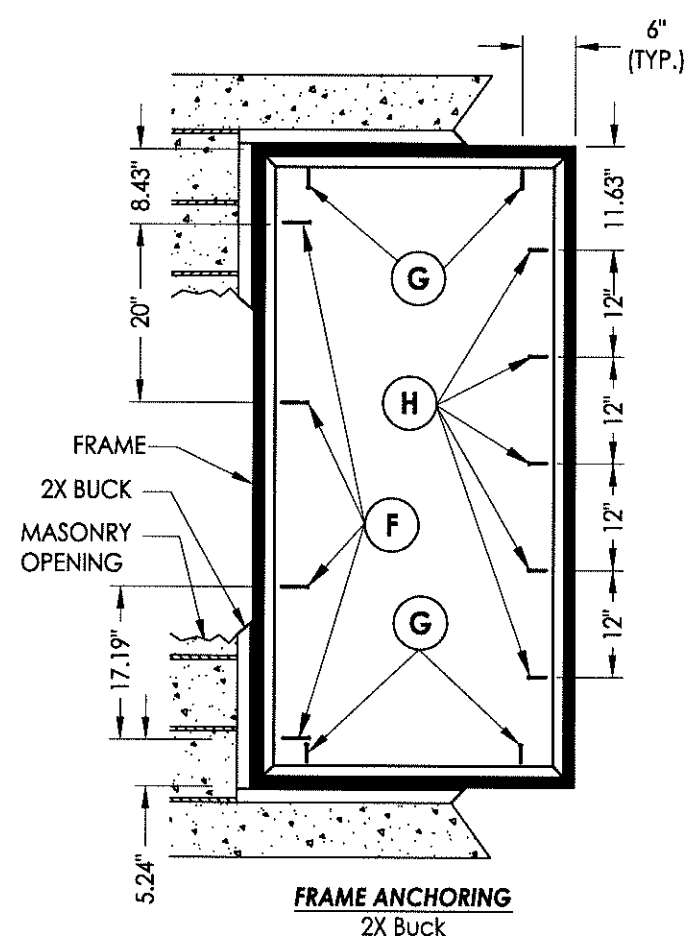
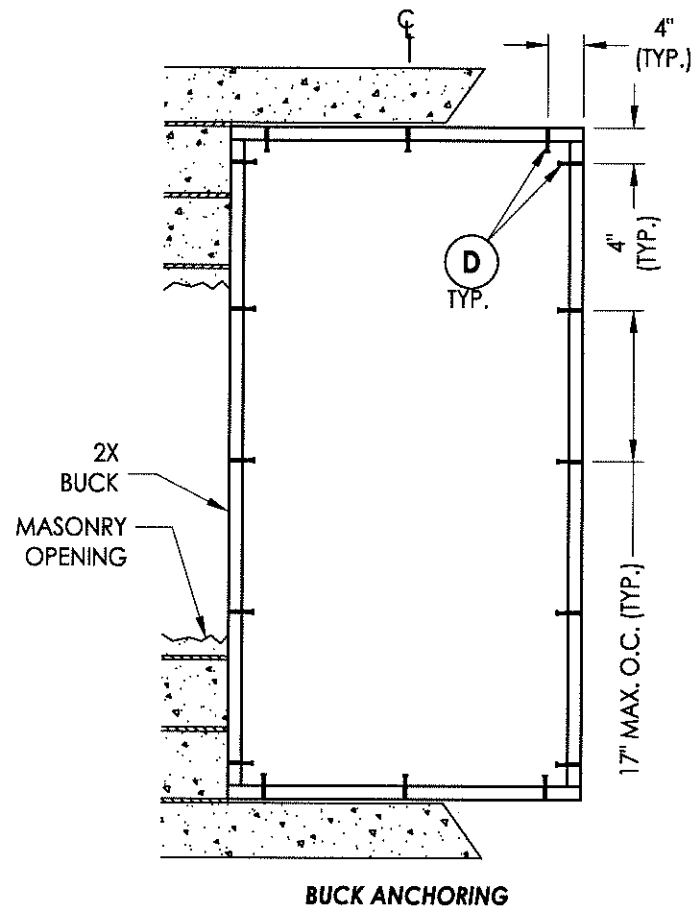
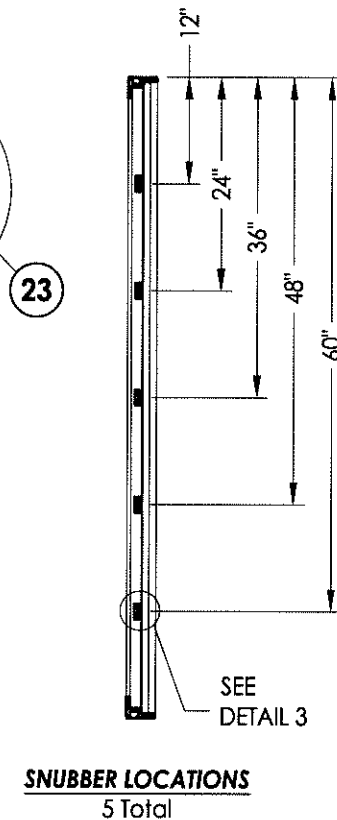
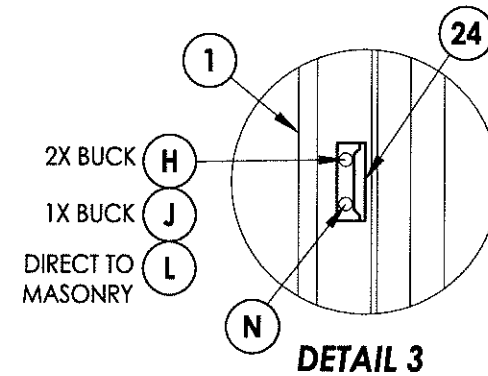
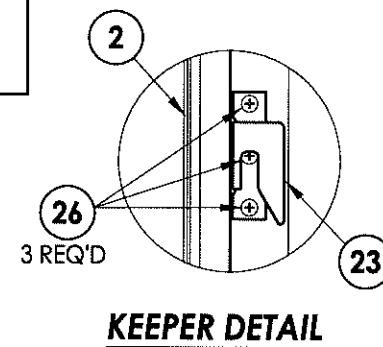
CONCRETE ANCHOR NOTES:

1. Substitution of equal concrete anchors from a different supplier may have different edge distance and center distance requirements.
2. Concrete anchor locations at the corners may be adjusted to maintain the min. edge distance to mortar joints. If concrete anchor locations noted as "MAX. ON CENTER" must be adjusted to maintain the min. edge distance to mortar joints, additional concrete anchors may be required to ensure the "MAX. ON CENTER" dimensions are not exceeded.
3. Concrete anchor table:

ANCHOR TYPE	ANCHOR SIZE	MIN. EMBEDMENT	MIN. CLEARANCE TO MASONRY EDGE	MIN. CLEARANCE TO ADJACENT ANCHOR
ITW	1/4"	1-1/4"	2-1/2"	3"
ELCO	1/4"	1-1/4"	1"	4"



MAX D.P. = 65 PSF



Documents Prepared By: **RW BUILDING CONSULTANTS, INC.**
 P.O. Box 230 Vairico FL 33595
 Phone No.: 813.659.9197
 Florida Board of Professional Engineers
 Certificate Of Authorization No. 9813
 Lyndon F. Schmidt, P.E. No. 43409

PRODUCT: 8400 SERIES Vinyl Outswing Casement Window
 PART OR ASSEMBLY: BUCK AND FRAME ANCHORING (MAX D.P. = 65 PSF)

NO.	DATE	DESCRIPTION	BY
1	4/04/13	UPDATED D.P./GLAZING	LFS

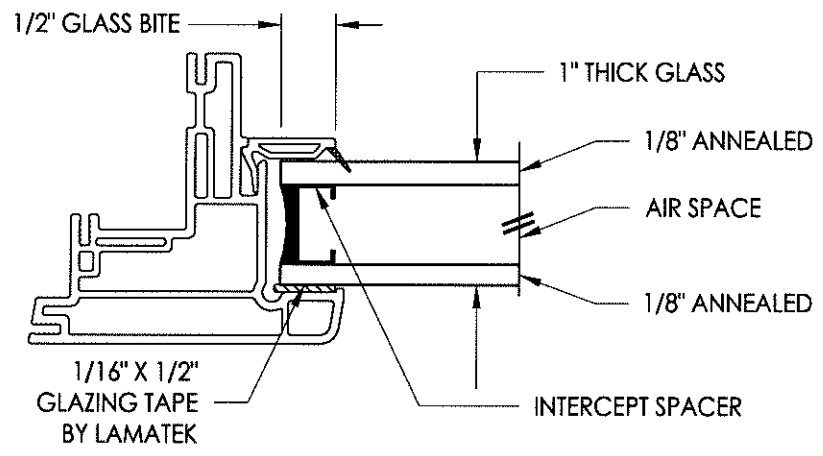
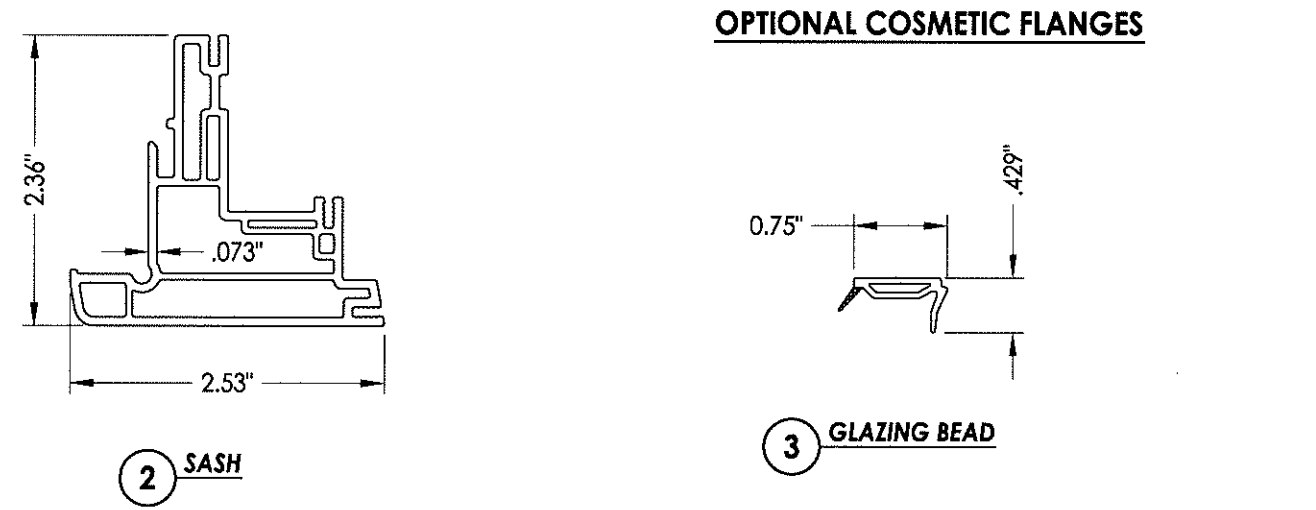
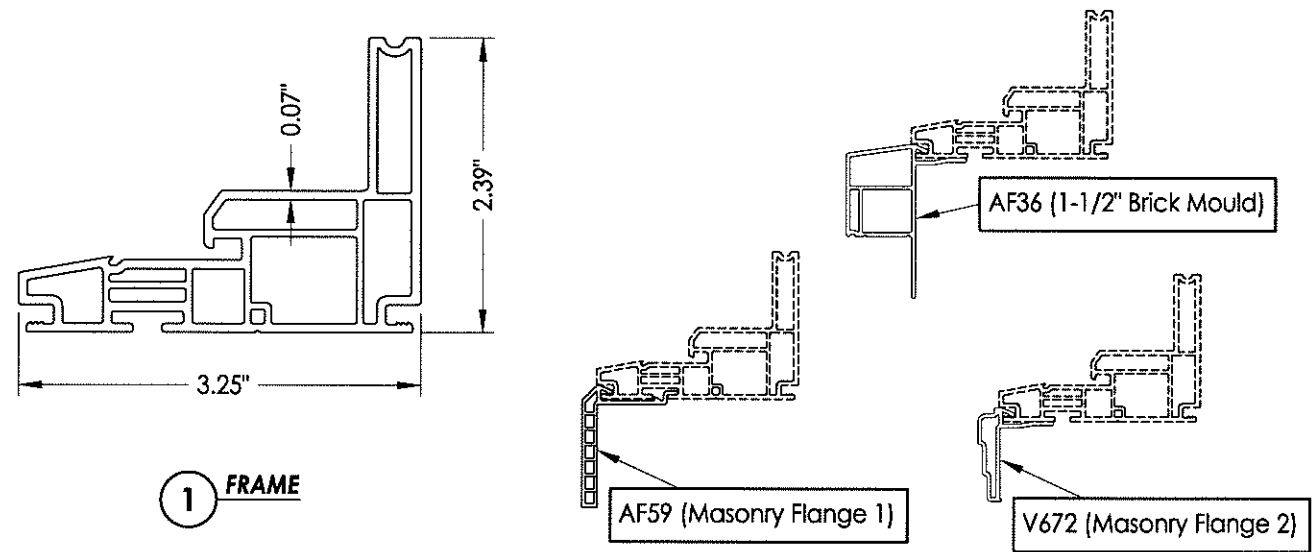
REVISIONS

DATE: 8/2/12
 SCALE: N.T.S.
 DWG. BY: JK
 CHK. BY: LFS
 DRAWING NO.: FL-15817.1
 SHEET 5 OF 6

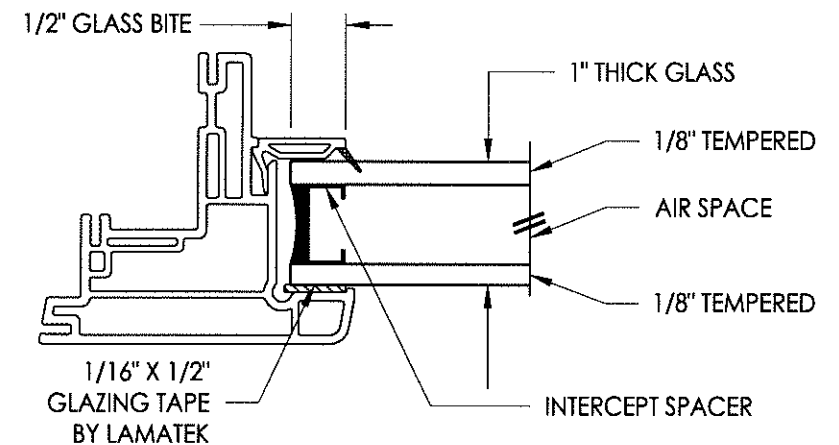
© 2012 R.W. BUILDING CONSULTANTS INC.

BILL OF MATERIALS		
ITEM #	DESCRIPTION	MATERIAL
A	1X BUCK SG >= 0.42	WOOD
B	2X BUCK SG >= 0.42	WOOD
C	1/4" MAX. SHIM SPACE	-
D	1/4" X 2-3/4" PFH ELCO OR ITW CONCRETE SCREW	STEEL
E	MASONRY - 3,192 PSI MIN. CONCRETE CONFORMING TO ACI 301 OR HOLLOW BLOCK CONFORMING TO ASTM C90	CONCRETE
F	#8 X 3" PFH WOOD SCREW	STEEL
G	#8 X 2" PPH WOOD SCREW	STEEL
H	#8 X 2" PFH WOOD SCREW	STEEL
J	1/4" X 3-1/4" PFH ELCO OR ITW CONCRETE SCREW	STEEL
K	1/4" X 4" PFH ELCO OR ITW CONCRETE SCREW	STEEL
L	1/4" X 2-1/4" PFH ELCO OR ITW CONCRETE SCREW	STEEL
M	#8 X 1-1/4" PFH WOOD SCREW	STEEL
N	#8 X 5/8" PFH SMS	STEEL
1	FRAME*	PVC
2	SASH*	PVC
3	GLAZING BEAD*	PVC
7	WEATHERSTRIP AMESBURY (CS 120 33-SEAL)	FOAM
8	WEATHERSTRIP AMESBURY (12300 SEAL)	VINYL
9	WEATHERSTRIP ULTRA FAB .250 (PILE - 250 - KP52)	VINYL
10	MULTI-POINT LOCK (TRUTH) 24.33.32.004	-
12	OPERATOR HANDLE (TRUTH) 50.10.00.011	-
21	TIE BAR GUIDE (TRUTH) 32384	-
22	TIE BAR (TRUTH) 12926	-
23	KEEPER (TRUTH)	-
24	SNUBBER (TRUTH) (SASH/FRAME) 22999	-
26	#8 X 1/2" TRUSS HEAD SMS	S.S.
27	OPERATOR (TRUTH STANDARD, MAX. CLEAR OR STAINLESS STEEL)	STEEL

* THE APPROVED WHITE RIGID PVC EXTERIOR EXTRUSIONS FOR WINDOWS ARE TO BE PRODUCED BY EXTRUDERS LICENSEES IN "AAMA CERTIFICATION PROGRAMS FOR RIGID PVC EXTRUSIONS".



G1 GLAZING DETAIL



G2 GLAZING DETAIL

Documents Prepared By:
RW BUILDING CONSULTANTS, INC.
 P.O. Box 230 Vairico FL, 33595
 Phone No.: 813.659.9197
 Florida Board of Professional Engineers
 Certificate of Authorization No. 9813
LFS
 Lyndon F. Schmidt, P.E. No. 43409

PRODUCT: 8400 SERIES Vinyl Outswing Casement Window
 PART OR ASSEMBLY: BILL OF MATERIALS, COMPONENTS AND GLAZING DETAIL

NO.	DATE	DESCRIPTION	LFS	BY
1	4/04/13	UPDATED D.P./GLAZING		

DATE: 8/2/12
 SCALE: N.T.S.
 DWG. BY: JK
 CHK. BY: LFS
 DRAWING NO.: FL-15817.1
 SHEET 6 OF 6