

# WINCORE™

## WINDOWS & DOORS

250 Staunton Turnpike, Parkersburg, WV 26104

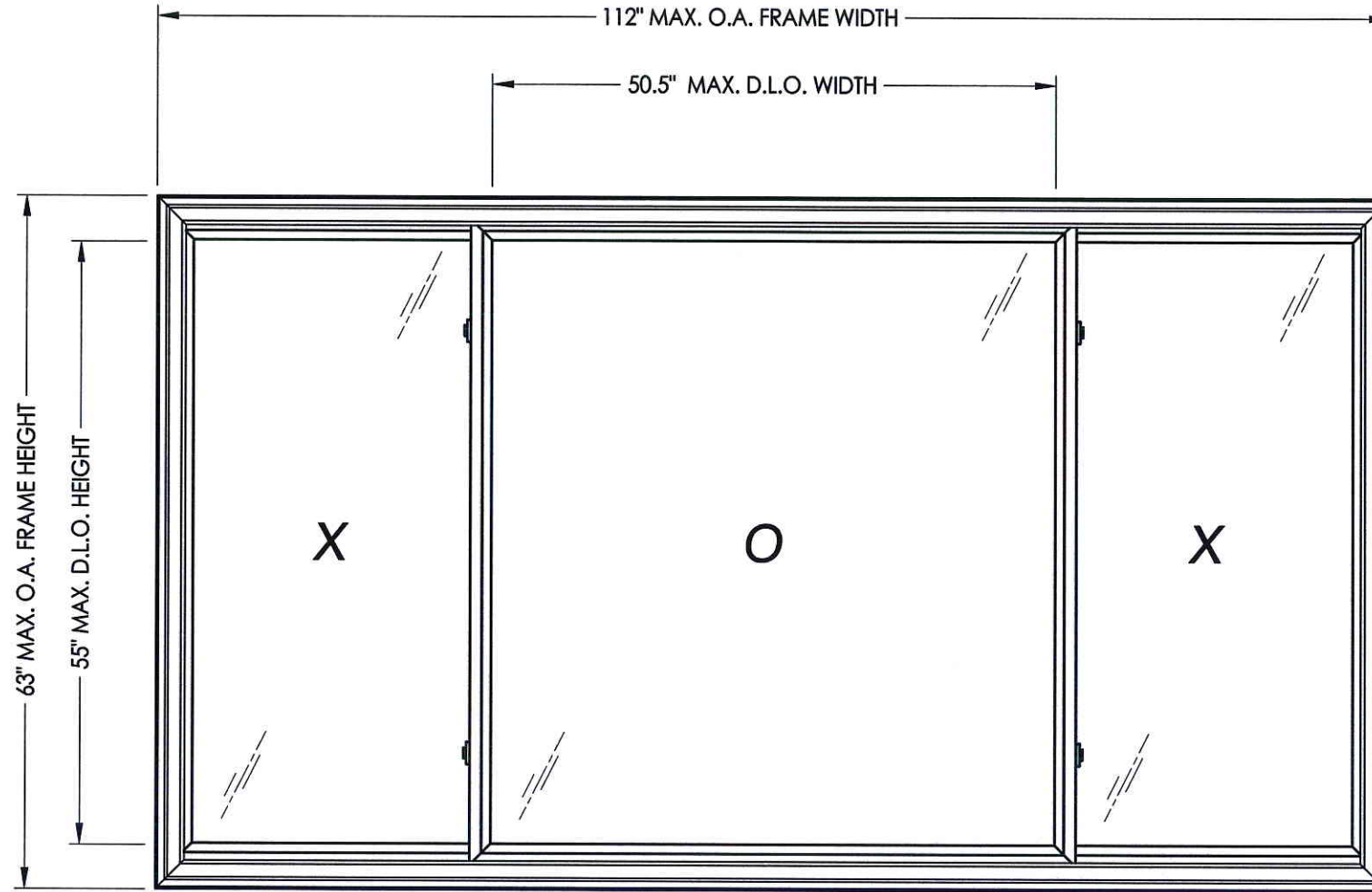
### 8800 Series ("HVHZ") Vinyl Horizontal Sliding Window "IMPACT"

#### GENERAL NOTES

1. This product has been evaluated and is in compliance with the 2010 Florida Building Code (FBC) structural requirements including the "High Velocity Hurricane Zone" (HVHZ).
2. Product anchors shall be as listed and spaced as shown on details. Anchor embedment to base material shall be beyond wall dressing or stucco.
3. When used in the "HVHZ", this product complies with Section 1626 of the FBC and does not require an impact resistant covering.
4. For 2x stud framing construction, anchoring of these units shall be the same as that shown for 2x buck masonry construction.
5. Site conditions that deviate from the details of this drawing require further engineering analysis by a licensed engineer or registered architect.
6. This product meets the water infiltration requirements for the "HVHZ".

#### TABLE OF CONTENTS

SHEET#	DESCRIPTION
1	Typical elevations, design pressures and general notes
2	Horizontal cross sections
3	Vertical cross sections
4	Buck and frame anchoring
5	Components
6	Bill of materials & glazing details



XOX SHOWN  
XXX ALSO APPROVED

MAX. FRAME DIMENSION	MAX. D.L.O. DIMENSION	GLASS TYPE	DESIGN PRESSURE (PSF)	
			POSITIVE	NEGATIVE
112.0" X 63.0"	50.5" X 55.0"	G1	+50.0	-55.0
		G2	+60.0	-65.0

Documents Prepared By:

RW BUILDING CONSULTANTS, INC.  
P.O. Box 230 Valrico FL 33595  
Phone No.: 813.659.9197  
Florida Board of Professional Engineers  
Certificate Of Authorization No. 9813  
LFS 4.22.13  
Lyndon F. Schmidt, P.E. No. 43409

PRODUCT: 8800 SERIES  
PART OR ASSEMBLY:  
TYPICAL ELEVATION, DESIGN PRESSURES & GENERAL NOTES

NO.	DATE	BY	REVISIONS

DATE: 4/08/13

SCALE: N.T.S.

DWG. BY: JK

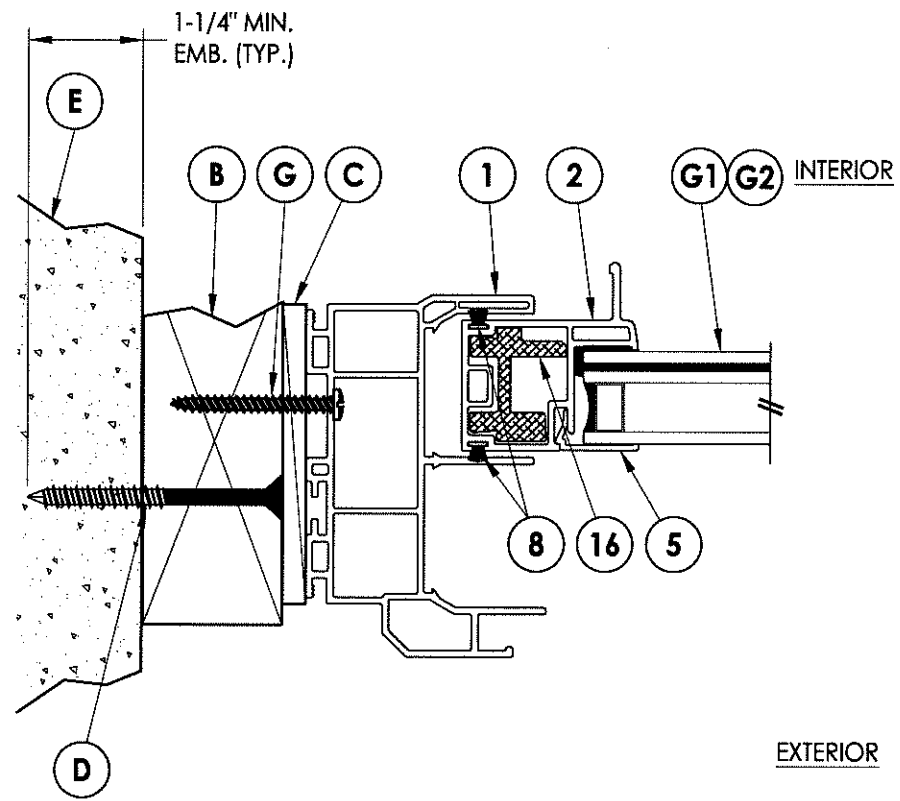
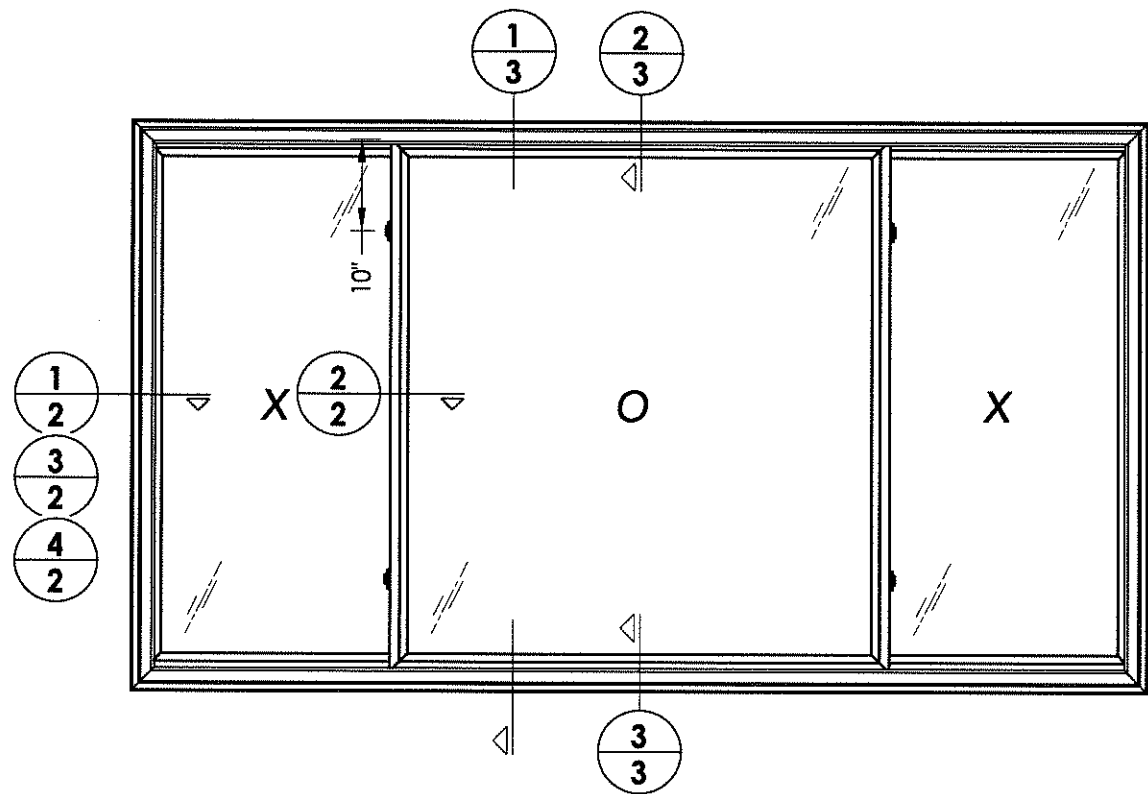
CHK. BY: LFS

DRAWING NO.:

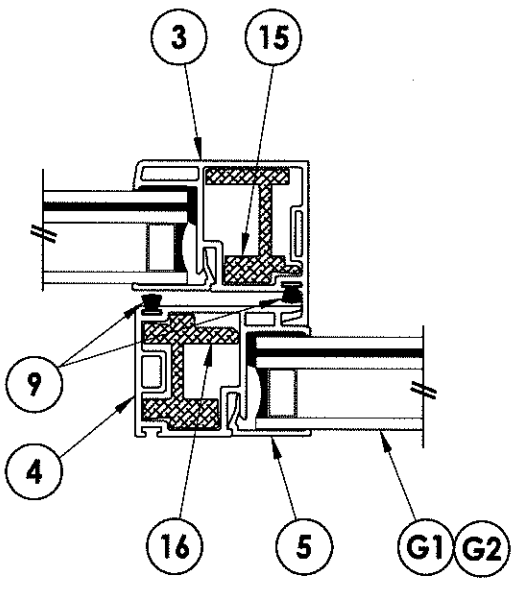
FL-16092.8

SHEET 1 OF 6

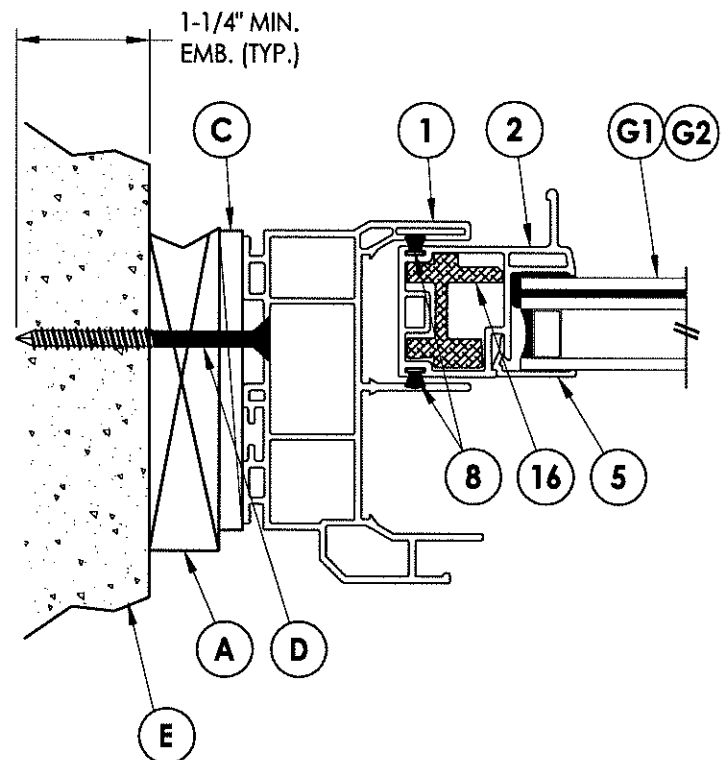
R:\A - Projects\Project Folders\Proj 1601 - 1700\VF 1679\Horizontal Slider\FL-16092.7-9.dwg, 2.8



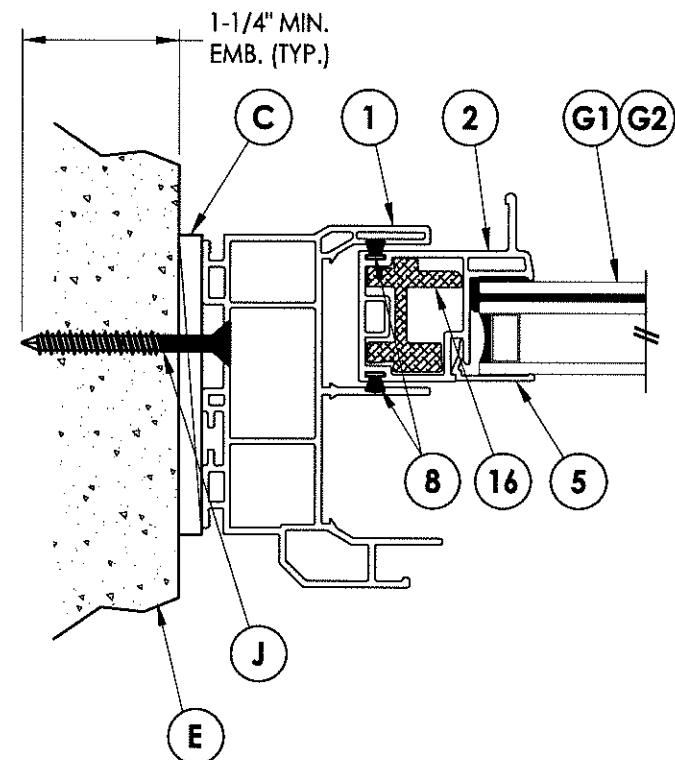
**1 HORIZONTAL CROSS SECTION**  
2 Shown w/ 2X buck



**2 HORIZONTAL CROSS SECTION**  
2 Shown direct to masonry



**4 HORIZONTAL CROSS SECTION**  
2 Shown w/ 1X buck



**3 HORIZONTAL CROSS SECTION**  
2 Shown direct to masonry

Documents Prepared By:

**RW** BUILDING CONSULTANTS, INC.  
P.O. Box 230 Valrico FL, 33595  
Phone No.: 813.659.9197  
Florida Board of Professional Engineers  
Certificate of Authorization No. 9813  
*LFS* 4.22.13  
Lynden F. Schmidt, P.E. No. 43409

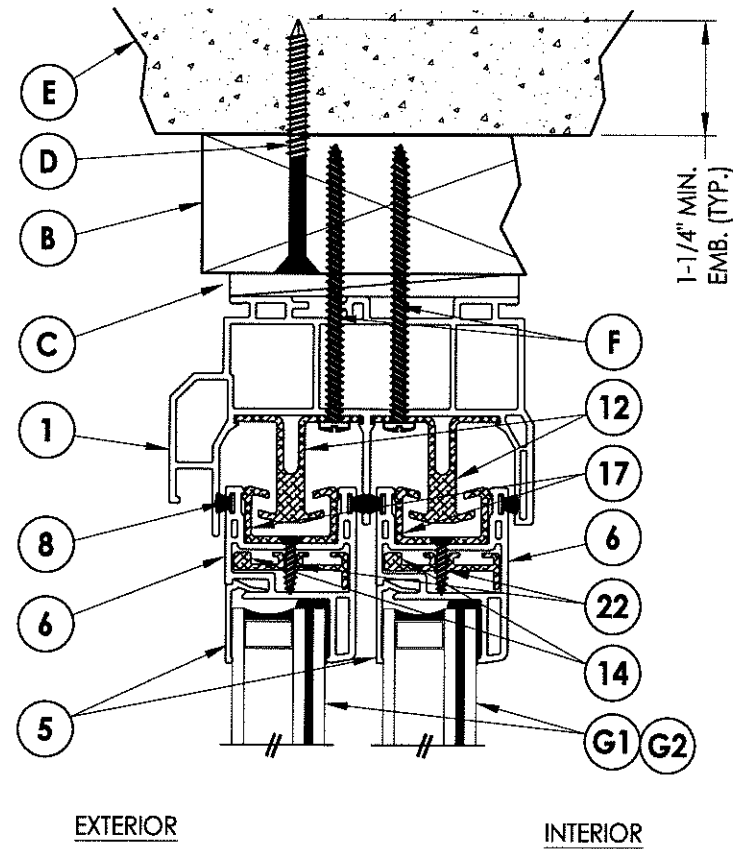
PRODUCT: 8800 SERIES

PART OR ASSEMBLY: HORIZONTAL CROSS SECTIONS

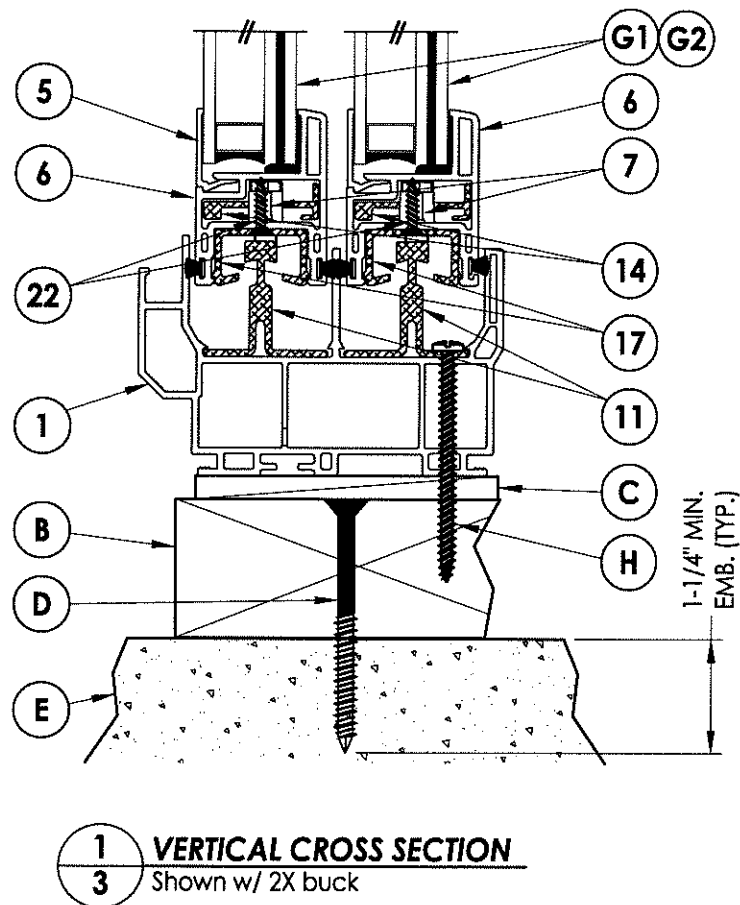
NO.	DATE	BY	REVISIONS

DATE: 4/08/13  
SCALE: N.T.S.  
DWG. BY: JK  
CHK. BY: LFS  
DRAWING NO.: FL-16092.8  
SHEET 2 OF 6

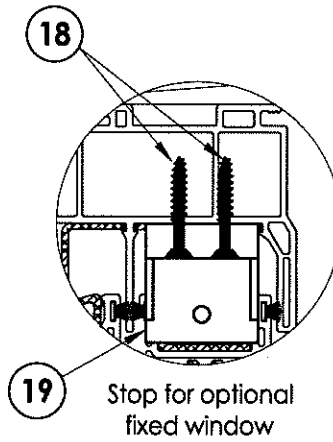
R:\A - Projects\Project Folders\Proj 1601 - 1700\PF 1679\Horizontal Slider\FL-16092.7-9.dwg, 3.8



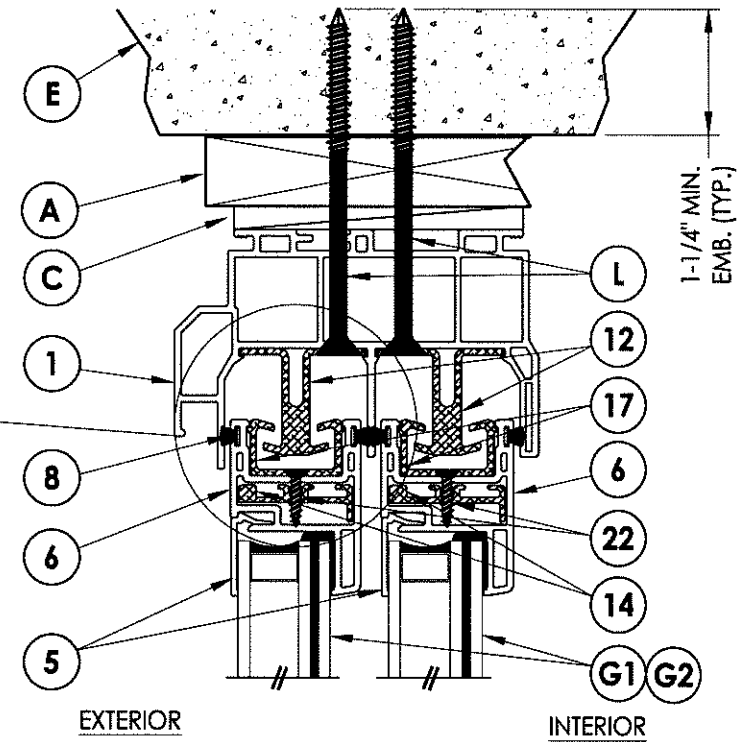
EXTERIOR INTERIOR



**1** VERTICAL CROSS SECTION  
**3** Shown w/ 2X buck

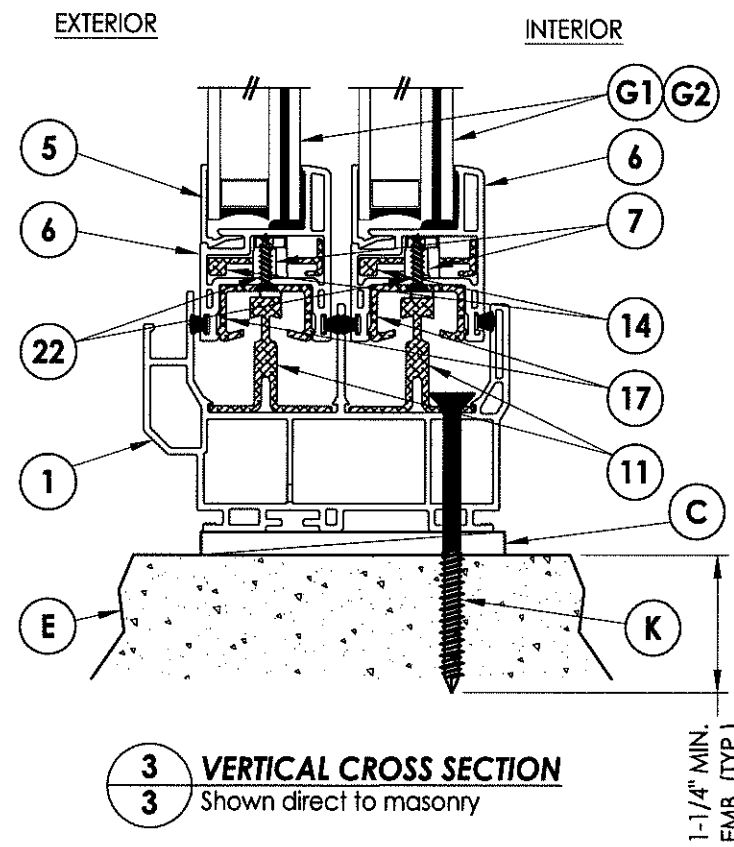


18 Stop for optional fixed window



EXTERIOR INTERIOR

**2** VERTICAL CROSS SECTION  
**3** Shown w/ 1X buck



**3** VERTICAL CROSS SECTION  
**3** Shown direct to masonry

Documents Prepared By:

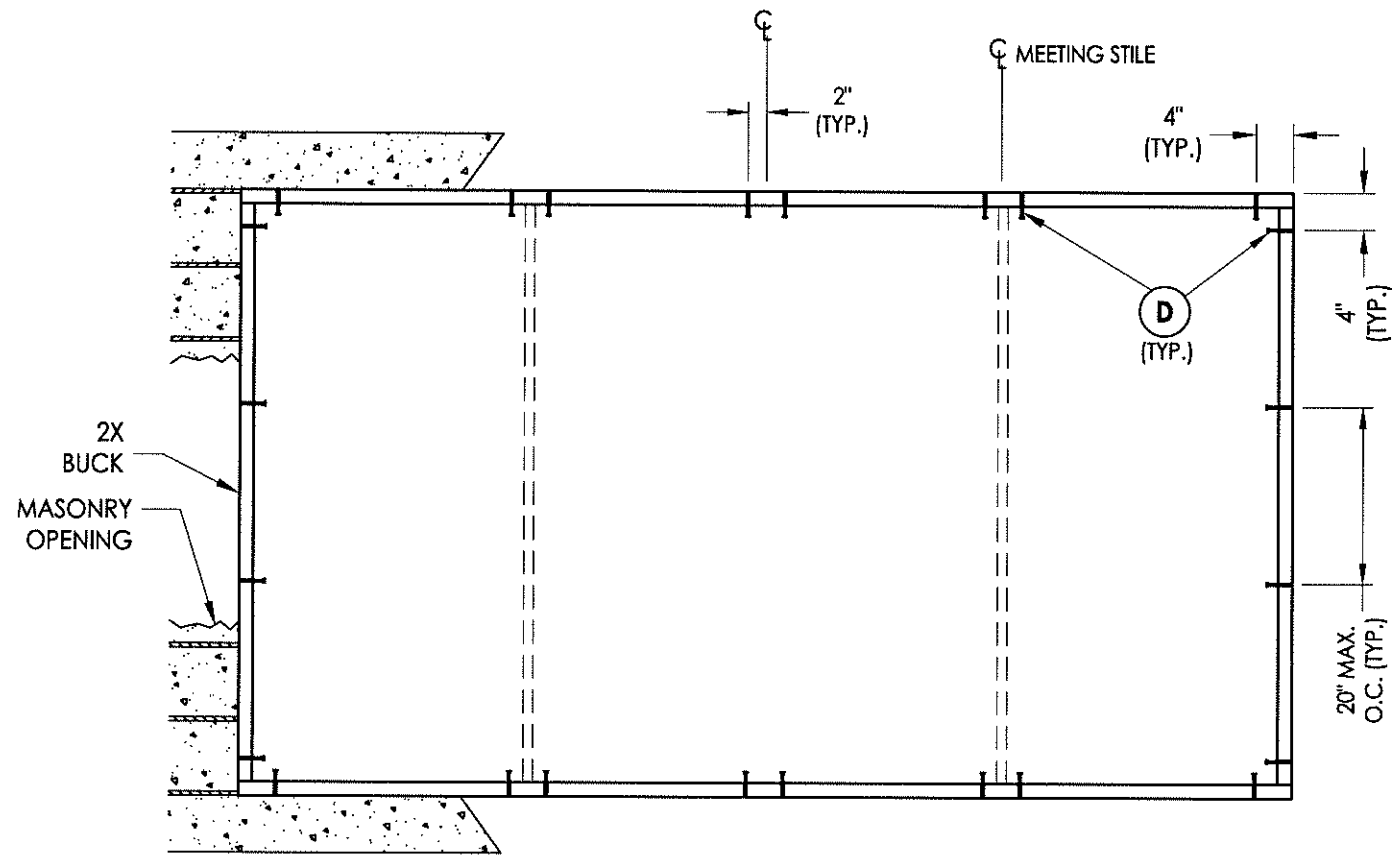
**RW** BUILDING CONSULTANTS, INC.  
P.O. Box 230 Valrico FL 33595  
Phone No.: 813.659.9197  
Florida Board of Professional Engineers  
Certificate Of Authorization No. 9813  
17-56 4.22.13  
Lyndon F. Schmidt, P.E. No. 43409

PRODUCT: 8800 SERIES

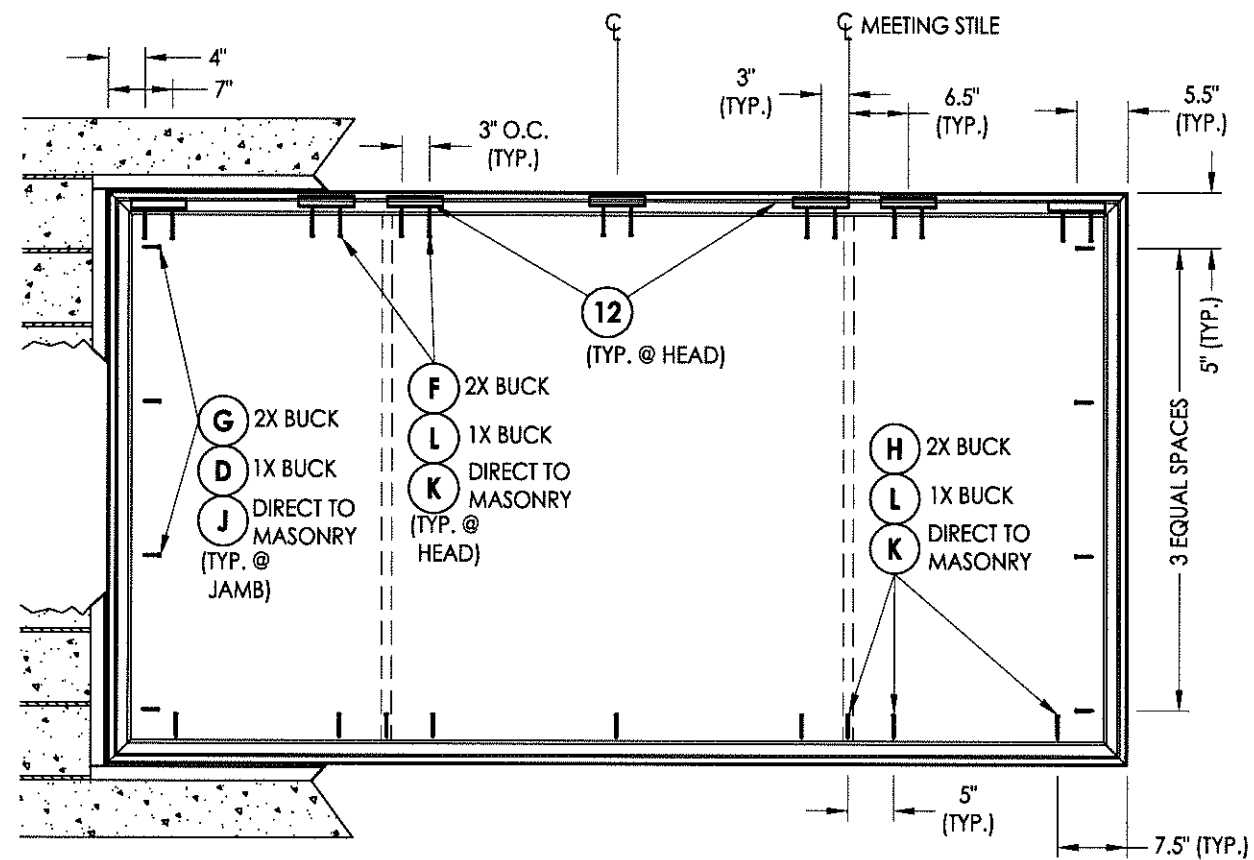
PART OR ASSEMBLY: VERTICAL CROSS SECTIONS

NO.	DATE	BY	REVISIONS

DATE: 4/08/13  
SCALE: N.T.S.  
DWG. BY: JK  
CHK. BY: LFS  
DRAWING NO.: FL-16092.8  
SHEET 3 OF 6



**BUCK ANCHORING**



**FRAME ANCHORING**

**CONCRETE ANCHOR NOTES:**

1. Substitution of equal concrete anchors from a different supplier may have different edge distance and center distance requirements.
2. Concrete anchor locations at the corners may be adjusted to maintain the min. edge distance to mortar joints. If concrete anchor locations noted as "MAX. ON CENTER" must be adjusted to maintain the min. edge distance to mortar joints, additional concrete anchors may be required to ensure the "MAX. ON CENTER" dimensions are not exceeded.
3. Concrete anchor table:

ANCHOR TYPE	ANCHOR SIZE	MIN. EMBEDMENT	MIN. CLEARANCE TO MASONRY EDGE	MIN. CLEARANCE TO ADJACENT ANCHOR
ITW	1/4"	1-1/4"	2-1/2"	3"
ELCO	1/4"	1-1/4"	1"	4"

Documents Prepared By:

**RW** BUILDING CONSULTANTS, INC.  
 P.O. Box 230 Valrico FL, 33595  
 Phone No.: 813.659.9197  
 Florida Board of Professional Engineers  
 Certificate Of Authorization No. 9813  
 Lyndon F. Schmidt, P.E. No. 43409

PRODUCT: 8800 SERIES

PART OR ASSEMBLY: BUCK AND FRAME ANCHORING

NO.	DATE	BY	REVISIONS

DATE: 4/08/13

SCALE: N.T.S.

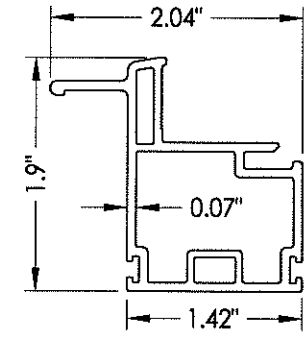
DWG. BY: JK

CHK. BY: LFS

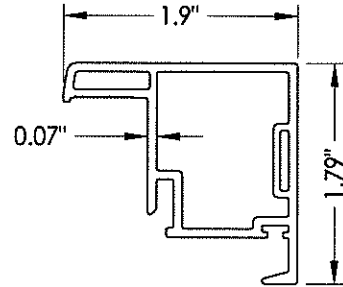
DRAWING NO.:

FL-16092.8

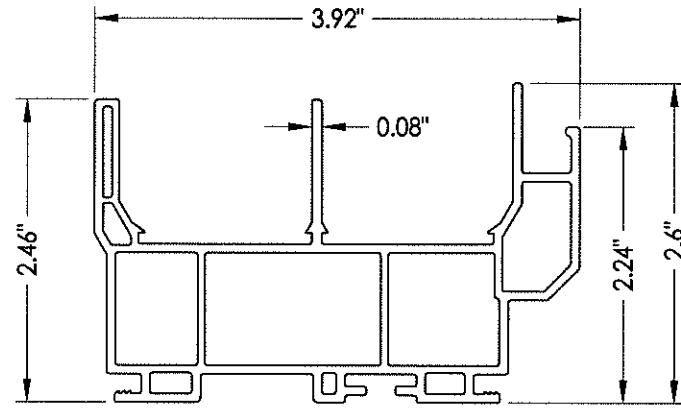
SHEET 4 OF 6



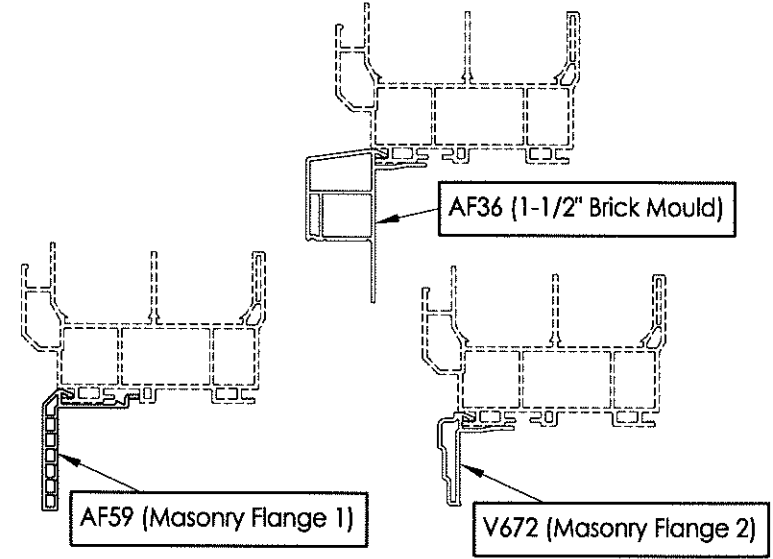
**2 SLIDER PULL STILE**



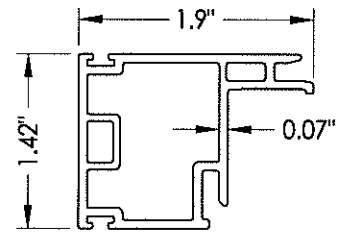
**3 LOCK STILE**



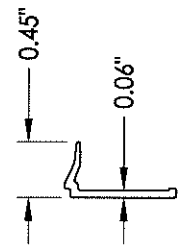
**1 FRAME**



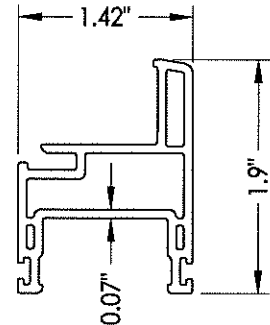
**OPTIONAL COSMETIC FLANGES**



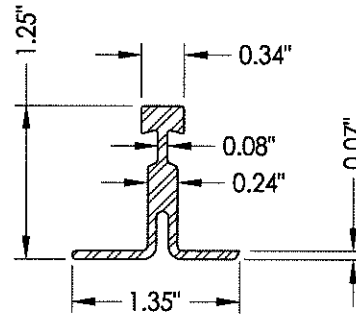
**4 KEEPER STILE**



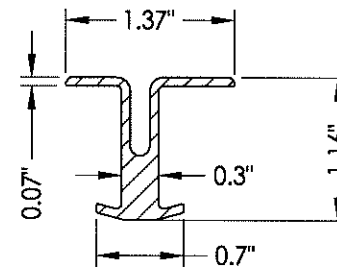
**5 GLAZING BEAD**



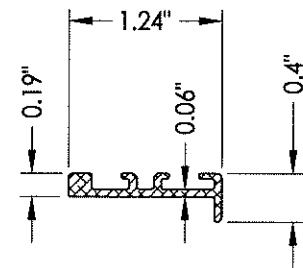
**6 SLIDER COMMON RAIL**



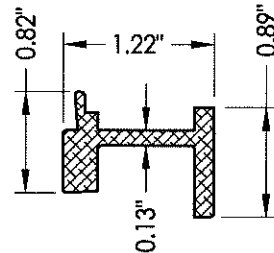
**11 SILL TRACK**  
Full width



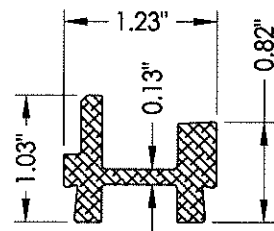
**12 HEAD TRACK**  
6\"/>



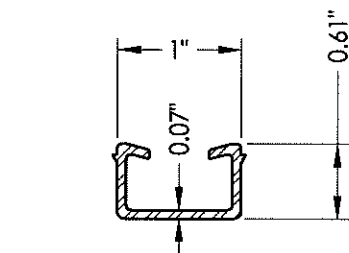
**14 REINFORCEMENT**  
Common Rail



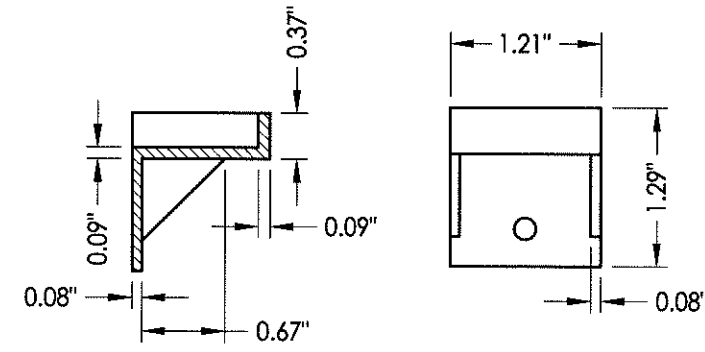
**15 REINFORCEMENT**  
Lock Stile



**16 REINFORCEMENT**  
Keeper and Pull Stile



**17 SLIDER SASH RETAINING CLIP**



**19 FLANKER STOP**

Documents Prepared By:

**RW** BUILDING CONSULTANTS, INC.  
P.O. Box 230 Vairico FL 33595  
Phone No.: 813.659.9197  
Florida Board of Professional Engineers  
Certificate Of Authorization No. 9813  
17-8-4-22-13  
Lyndon F. Schmidt, P.E. No. 43409

PRODUCT: 8800 SERIES

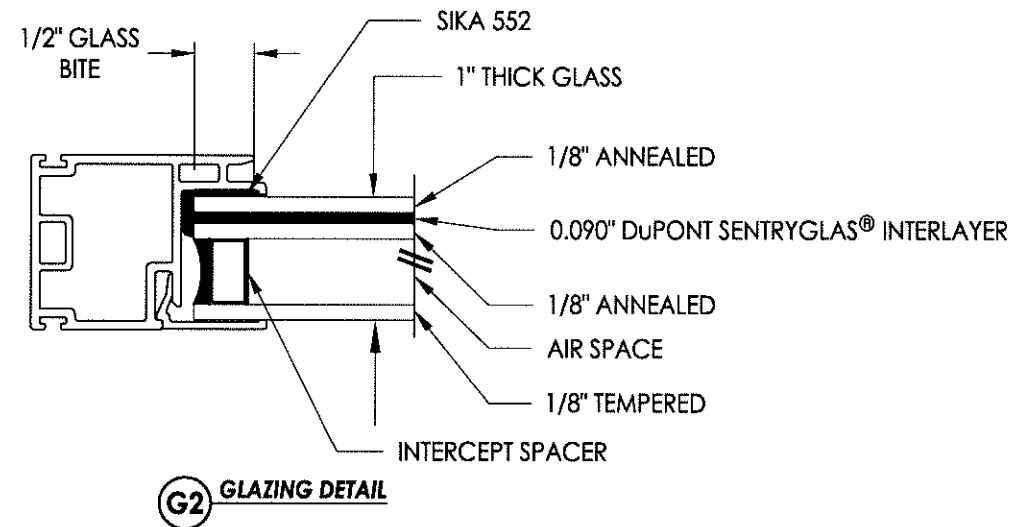
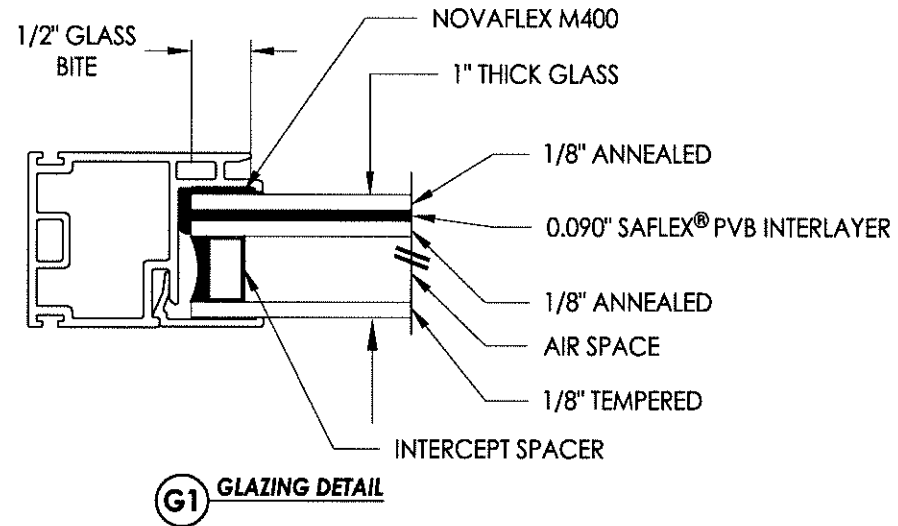
PART OR ASSEMBLY: COMPONENTS

NO.	DATE	REVISIONS	BY

DATE: 4/08/13  
SCALE: N.T.S.  
DWG. BY: JK  
CHK. BY: LFS  
DRAWING NO.: FL-16092.8  
SHEET 5 OF 6

BILL OF MATERIALS		
ITEM #	DESCRIPTION	MATERIAL
A	1X BUCK SG >= 0.55	WOOD
B	2X BUCK SG >= 0.55	WOOD
C	1/4" MAX. SHIM SPACE	-
D	1/4" X 2-3/4" PFH ELCO OR ITW CONCRETE SCREW	STEEL
E	MASONRY - 3,192 PSI MIN. CONCRETE CONFORMING TO ACI 301 OR HOLLOW BLOCK CONFORMING TO ASTM C90	CONCRETE
F	#10 X 3" PPH WOOD SCREW	STEEL
G	#10 X 1-3/4" PPH WOOD SCREW	STEEL
H	#10 X 2-1/2" PPH WOOD SCREW	STEEL
J	1/4" X 2-1/4" ITW CONCRETE SCREW	STEEL
K	1/4" X 3-1/4" ITW CONCRETE SCREW	STEEL
L	1/4" X 3-3/4" ITW CONCRETE SCREW	STEEL
1	FRAME*	PVC
2	SLIDER PULL STILE*	PVC
3	LOCK STILE*	PVC
4	KEEPER STILE*	PVC
5	GLAZING BEAD*	PVC
6	SLIDER COMMON RAIL*	PVC
7	BALL BEARING ROLLER	-
8	WEATHERSTRIP (0.230")	-
9	WEATHERSTRIP (0.380")	-
11	SILL TRACK	ALUM
12	HEAD TRACK	ALUM
14	SLIDE RAIL REINFORCEMENT	ALUM
15	REINFORCEMENT	ALUM
16	REINFORCEMENT	ALUM
17	SLIDER SASH RETAINING CLIP	ALUM
18	#8 X 1" PFH SMS	STEEL
19	FLANKER STOP	NYLON
22	#8 X 5/8" (#6 head) PFH SMS	STEEL

\* THE APPROVED WHITE RIGID PVC EXTERIOR EXTRUSIONS FOR WINDOWS ARE TO BE PRODUCED BY EXTRUDERS LICENSEES IN "AAMA CERTIFICATION PROGRAMS FOR RIGID PVC EXTRUSIONS".



Documents Prepared By:  
**R.W.** BUILDING CONSULTANTS, INC.  
 P.O. Box 230 Valrico FL, 33595  
 Phone No.: 813.659.9197  
 Florida Board of Professional Engineers  
 Certificate of Authorization No. 9813  
*R.W. Schmidt*  
 Lyndon F. Schmidt, P.E. No. 43409

PRODUCT: 8800 SERIES  
 PART OR ASSEMBLY: BILL OF MATERIALS & GLAZING DETAILS

NO.	DATE	BY	REVISIONS

DATE: 4/08/13  
 SCALE: N.T.S.  
 DWG. BY: JK  
 CHK. BY: LFS  
 DRAWING NO.: FL-16092.8  
 SHEET 6 OF 6