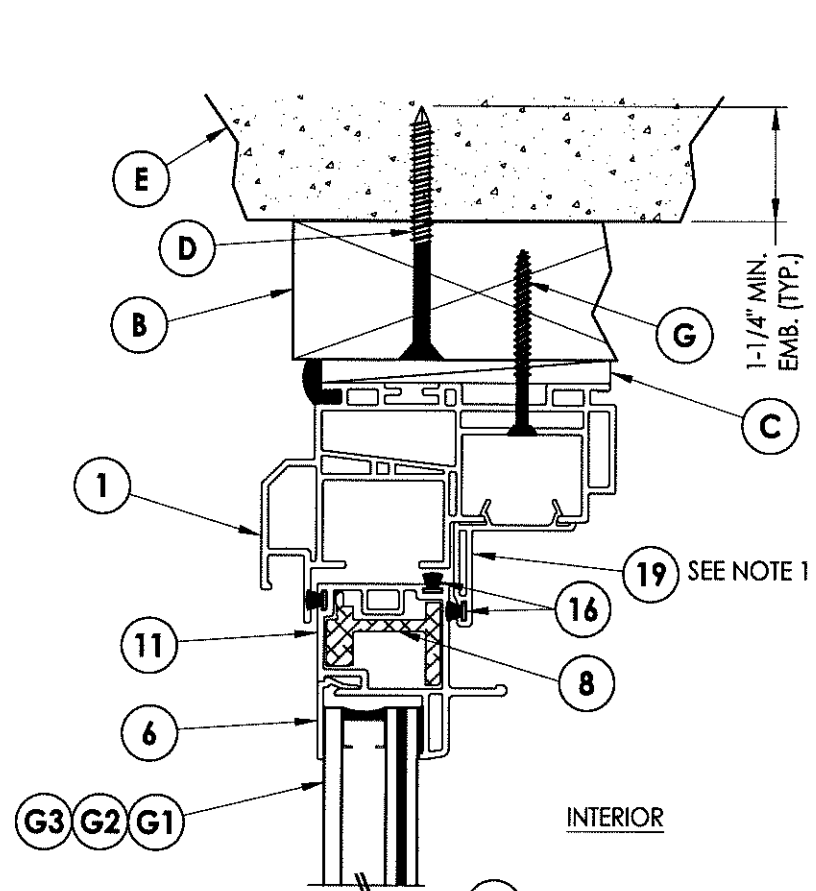
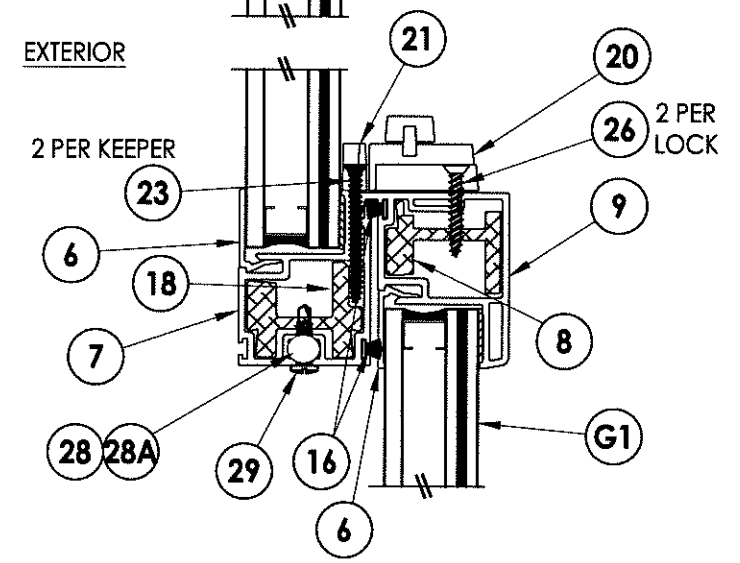


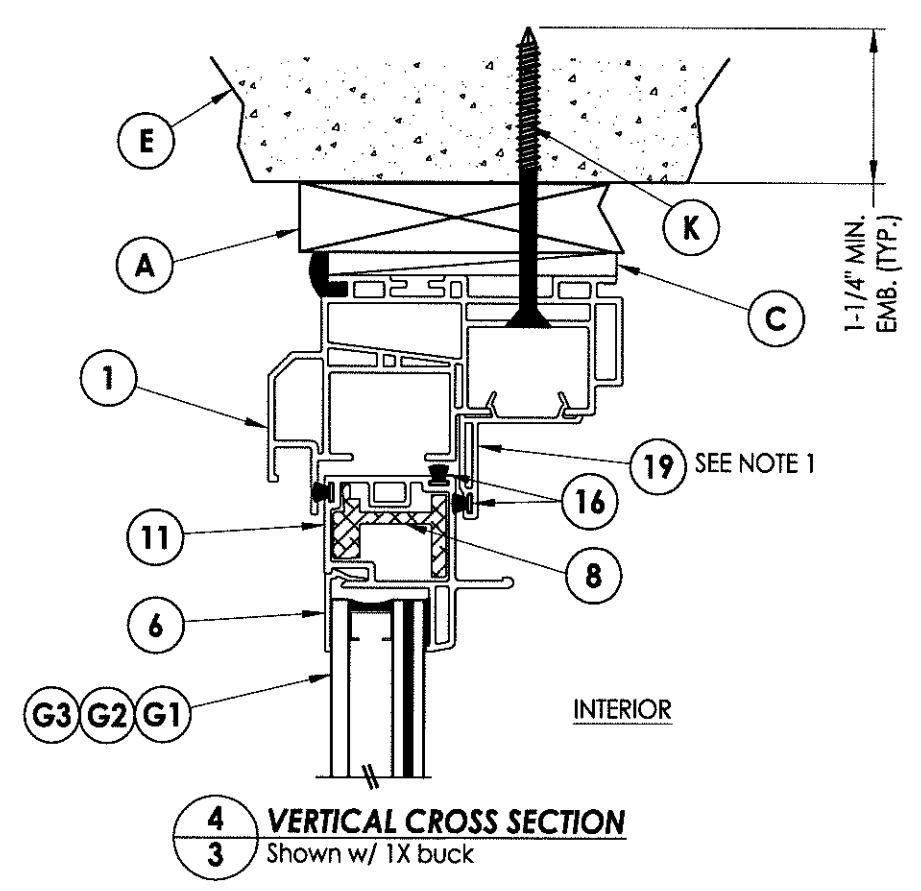
R:\A - Projects\Project Folders\Proj 1601 - 1700\PF 1679\Double Hung VL-15819.dwg, 3.2



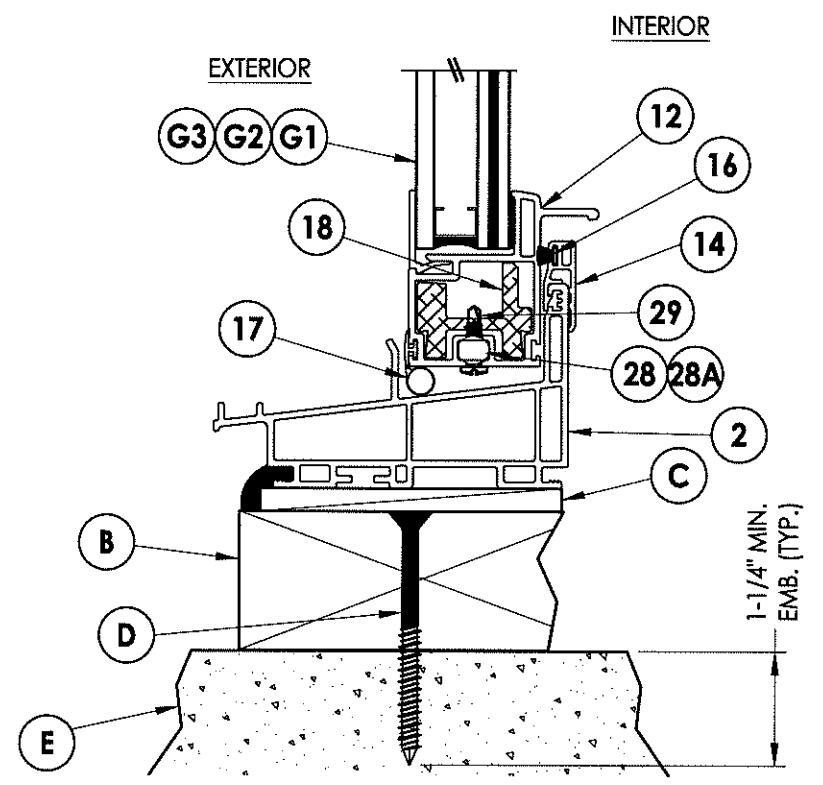
1 VERTICAL CROSS SECTION
3 Shown w/ 2X buck



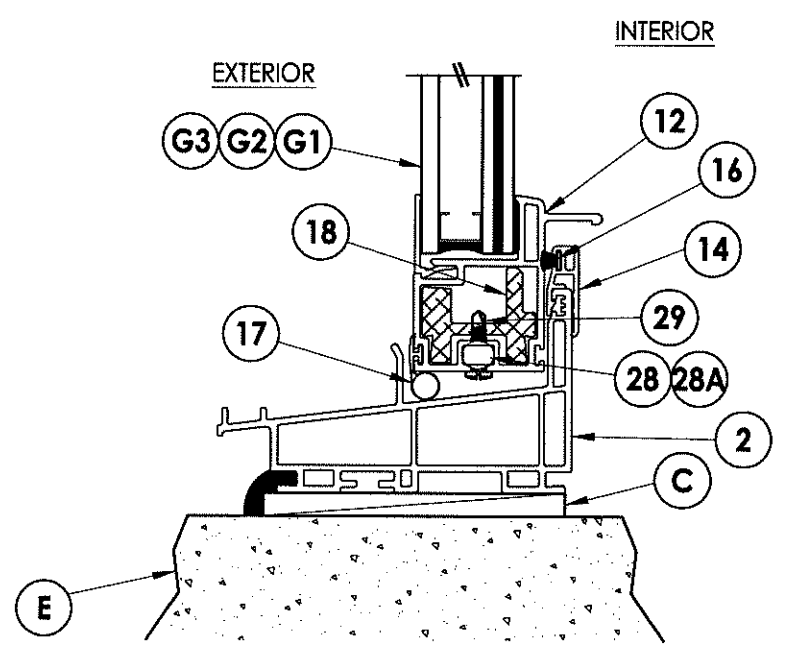
2 VERTICAL CROSS SECTION
3 Shown w/ 2X buck



4 VERTICAL CROSS SECTION
3 Shown w/ 1X buck



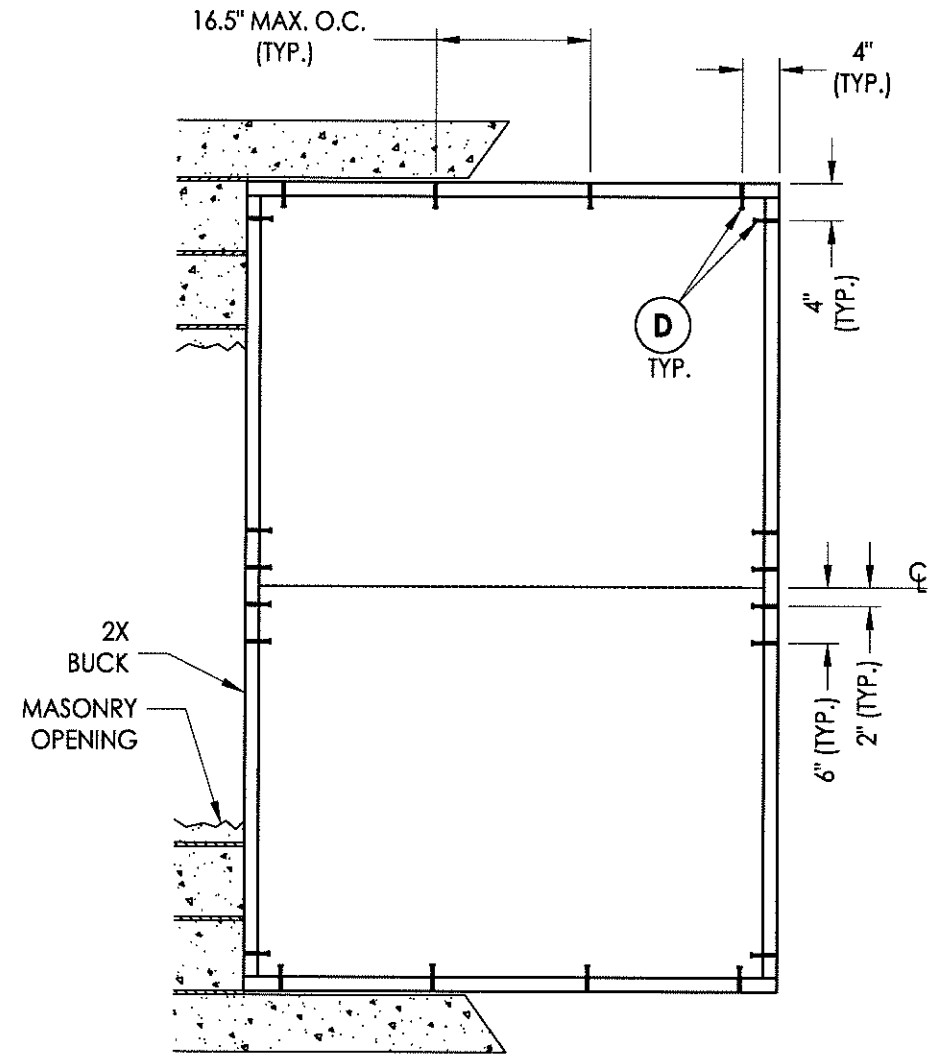
3 VERTICAL CROSS SECTION
3 Shown direct to masonry



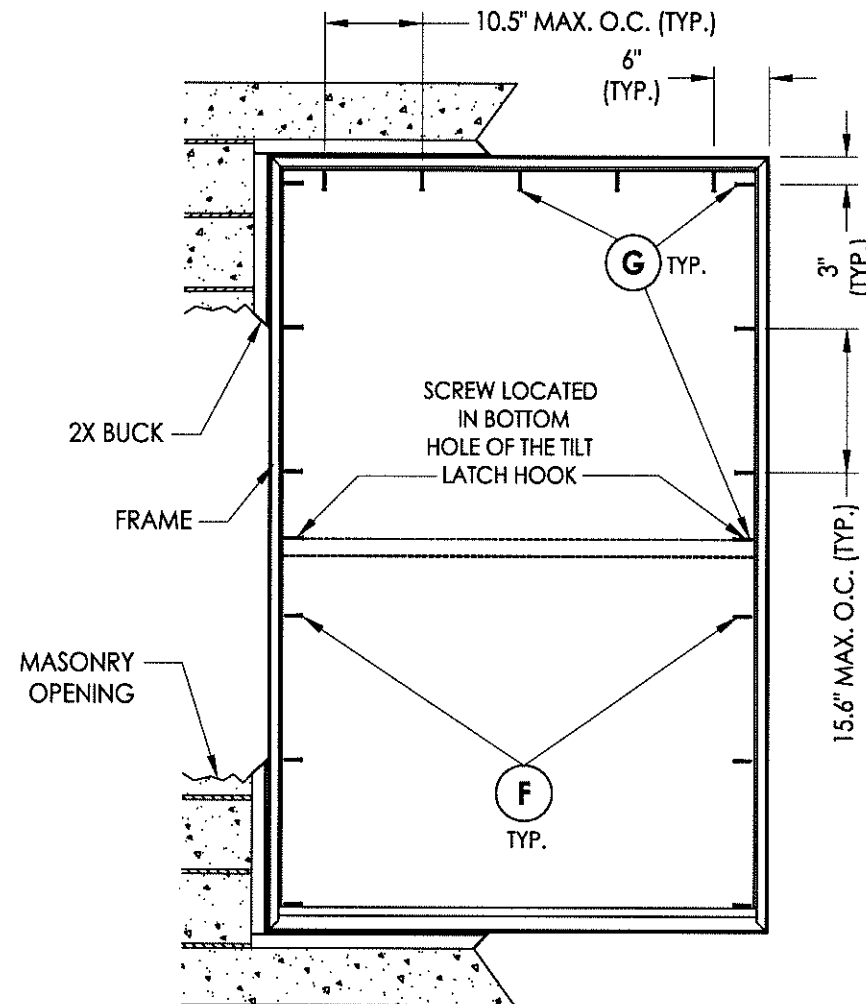
Note:
1. Item #19 glued to item #1 frame head with PVC Vinyl Cement.

| | | | |
|--|--|---------------------------------------|--|
| Documents Prepared By: <i>RW</i> BUILDING CONSULTANTS, INC. P.O. Box 230 Valrico FL 33595 Phone No.: 813.659.9197 | | DATE: 8/2/12 | |
| 8800 SERIES Vinyl Double Hung Window | | SCALE: N.T.S. | |
| PART OR ASSEMBLY: VERTICAL CROSS SECTIONS | | DWG. BY: JK | |
| NO. DATE | | CHK. BY: LFS | |
| 1 4/02/13 UPDATE FRAME SIZE/DP/GLZ | | DRAWING NO.: FL-15819.2 | |
| REVISIONS | | SHEET 3 OF 6 | |
| LFS BY | | © 2012 R.W. BUILDING CONSULTANTS INC. | |

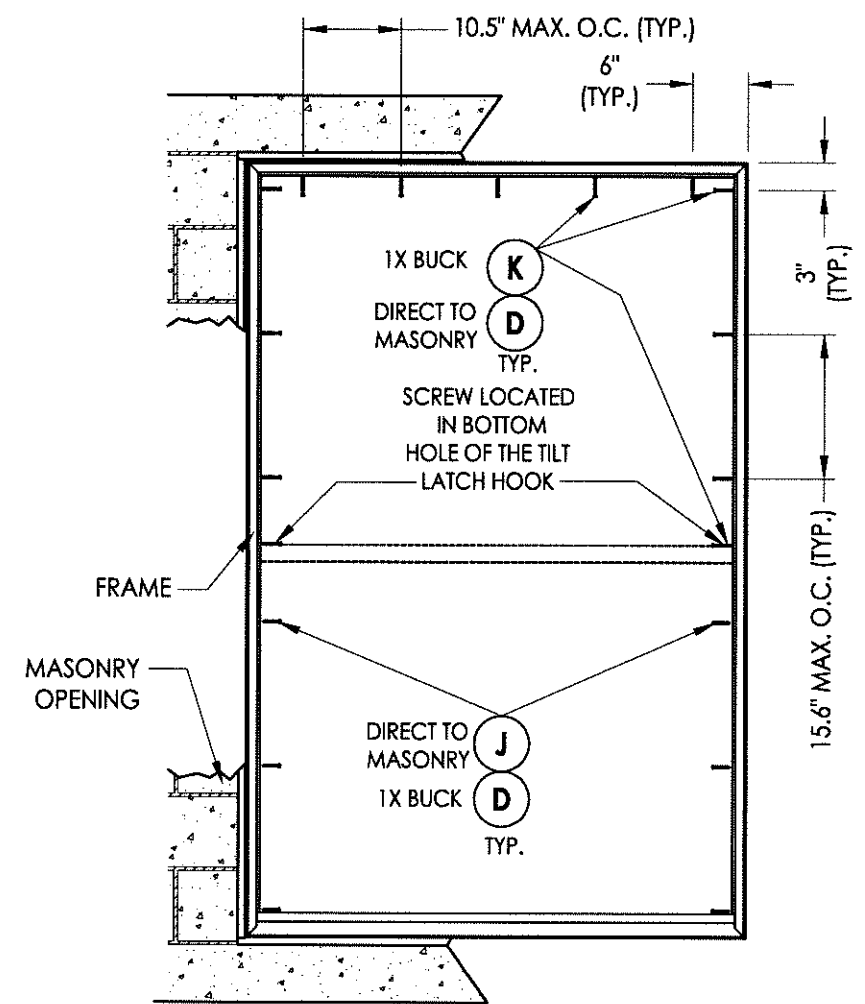
Florida Board of Professional Engineers
Certificate Of Authorization No. 9813
LFS 5.3.12
Lyndon F. Schmidt, P.E. No. 43409



BUCK ANCHORING



FRAME ANCHORING
2X Buck



FRAME ANCHORING
1X Buck
Direct to masonry

NOTE: Frame anchoring screws are located as follows:
Interior track: above the mid-rail
Exterior track: below the mid-rail

CONCRETE ANCHOR NOTES:

1. Substitution of equal concrete anchors from a different supplier may have different edge distance and center distance requirements.
2. Concrete anchor locations at the corners may be adjusted to maintain the min. edge distance to mortar joints. If concrete anchor locations noted as "MAX. ON CENTER" must be adjusted to maintain the min. edge distance to mortar joints, additional concrete anchors may be required to ensure the "MAX. ON CENTER" dimensions are not exceeded.
3. Concrete anchor table:

| ANCHOR TYPE | ANCHOR SIZE | MIN. EMBEDMENT | MIN. CLEARANCE TO MASONRY EDGE | MIN. CLEARANCE TO ADJACENT ANCHOR |
|-------------|-------------|----------------|--------------------------------|-----------------------------------|
| ITW | 1/4" | 1-1/4" | 2-1/2" | 3" |
| ELCO | 1/4" | 1-1/4" | 1" | 4" |

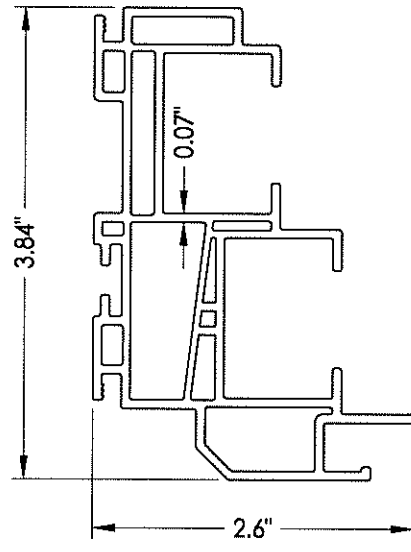
Documents Prepared By:

RW BUILDING CONSULTANTS, INC.
P.O. Box 230 Vairco FL 33595
Phone No.: 813.659.9197
Florida Board of Professional Engineers
Certificate of Authorization No. 9813
Lyndon F. Schmidt, P.E. No. 43409

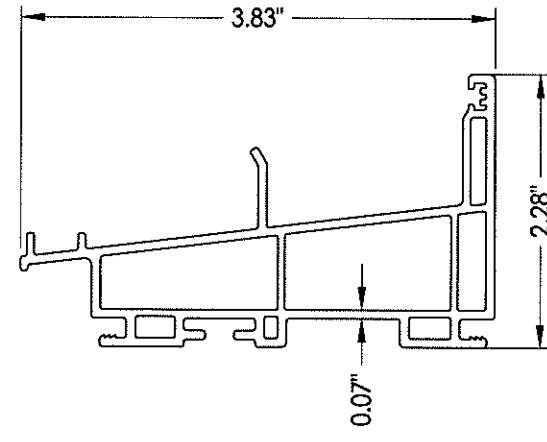
PRODUCT: 8800 SERIES Vinyl Double Hung Window
PART OR ASSEMBLY: BUCK AND FRAME ANCHORING

| NO. | DATE | REVISIONS | BY |
|-----|---------|--------------------------|-----|
| 1 | 4/02/13 | UPDATE FRAME SIZE/DP/GLZ | LFS |

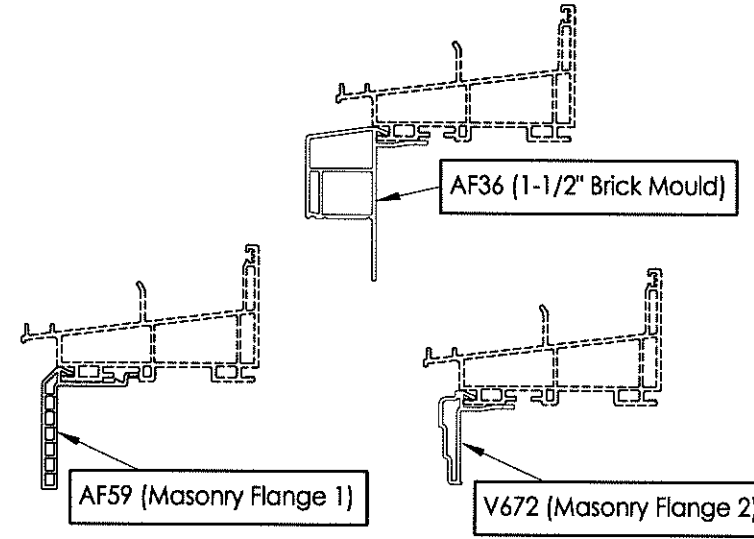
DATE: 8/2/12
SCALE: N.T.S.
DWG. BY: JK
CHK. BY: LFS
DRAWING NO.: FL-15819.2
SHEET 4 OF 6



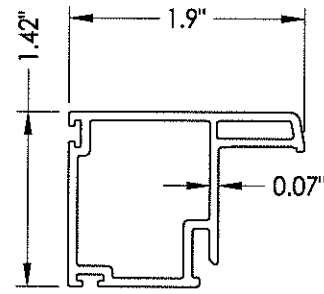
1 FRAME HEAD & JAMB



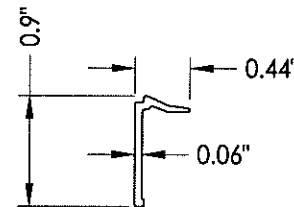
2 SILL



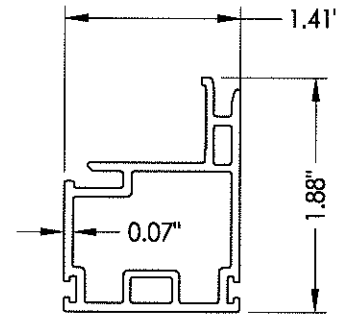
OPTIONAL COSMETIC FLANGES



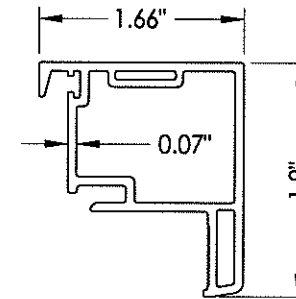
5 SASH STILE



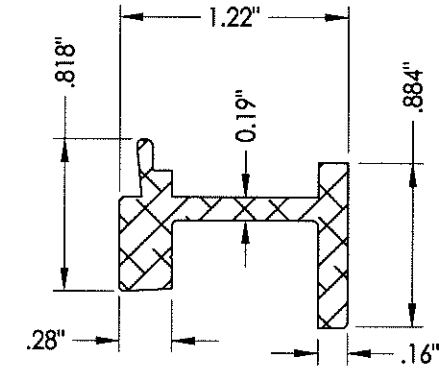
6 GLAZING BEAD



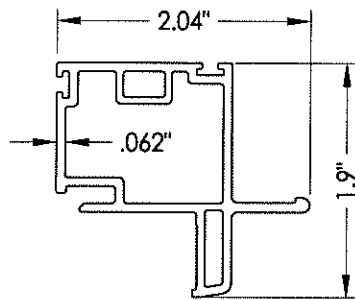
7 KEEPER RAIL
Upper Sash



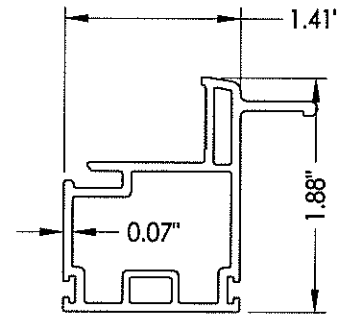
9 LOCK RAIL
Lower Sash



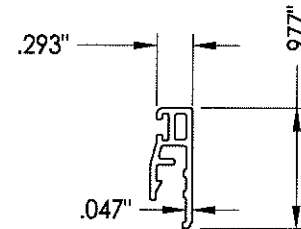
8 REINFORCEMENT
Alum.



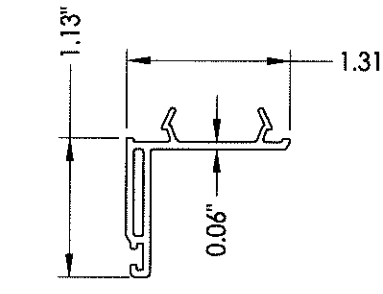
11 TOP RAIL
Upper Sash



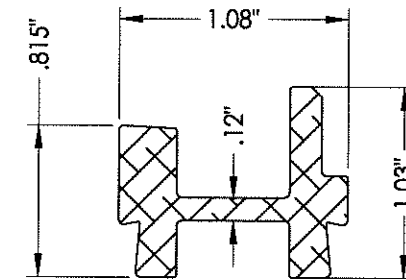
12 BOTTOM RAIL
Lower Sash



14 SILL DAM EXTENDER



19 HEAD ADAPTER



18 REINFORCEMENT
Alum.

| | |
|--------------|------------|
| DATE: | 8/2/12 |
| SCALE: | N.T.S. |
| DWG. BY: | JK |
| CHK. BY: | LFS |
| DRAWING NO.: | FL-15819.2 |
| SHEET | 5 OF 6 |

| | |
|-------------------|---|
| PRODUCT: | 8800 SERIES Vinyl Double Hung Window |
| PART OR ASSEMBLY: | COMPONENTS |

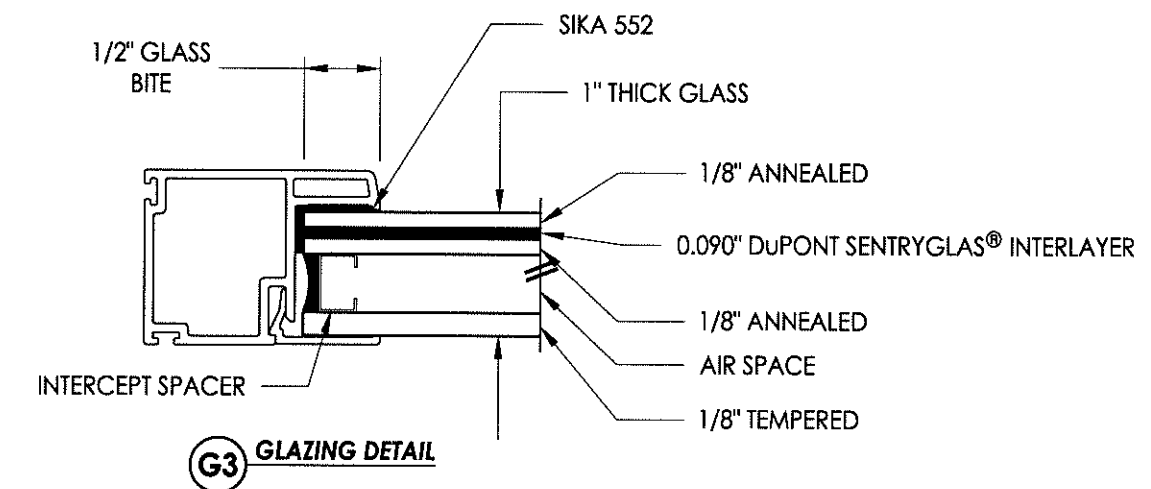
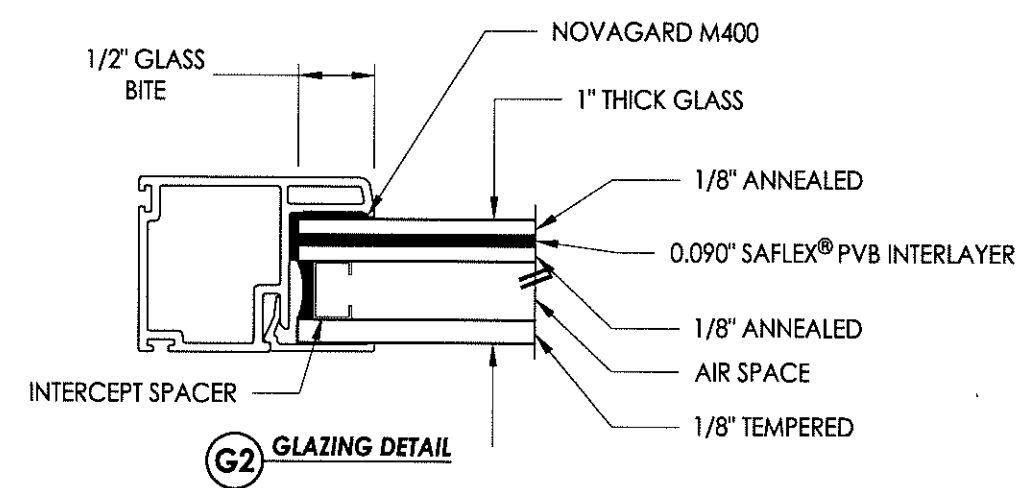
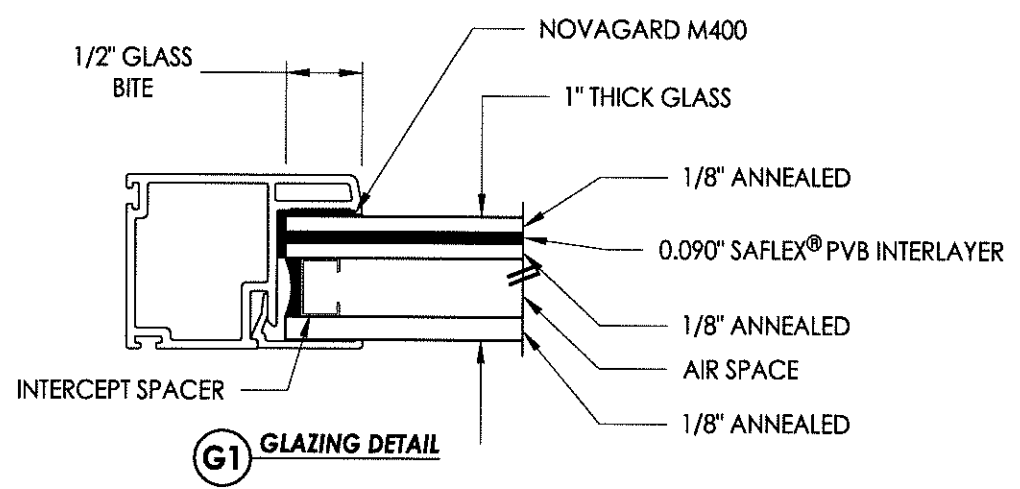
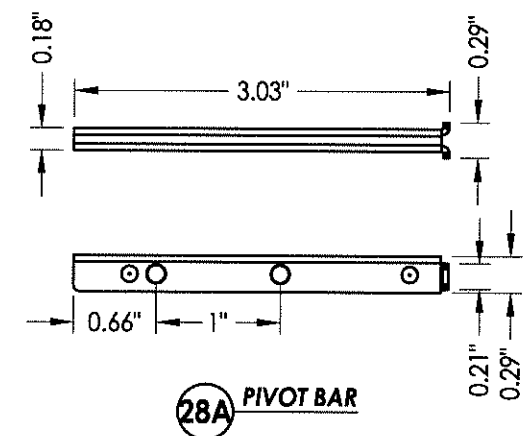
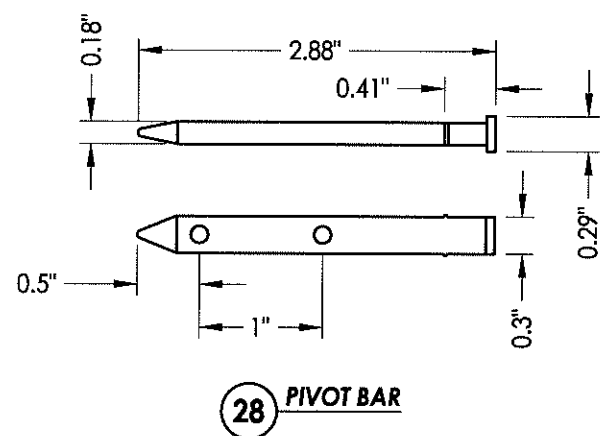
Documents Prepared By:

RW BUILDING CONSULTANTS, INC.
P.O. Box 230 Vairico FL 33595
Phone No.: 813.659.9197
Florida Board of Professional Engineers
Certificate Of Authorization No. 9813
LFS 5.3.12
Lyndon F. Schmidt, P.E. No. 43489

R:\VA - Projects\Project Folders\Proj 1601 - 1700\PF 1679\Double Hung FL-15819.dwg, 6.2

| BILL OF MATERIALS | | |
|-------------------|--|----------|
| ITEM # | DESCRIPTION | MATERIAL |
| A | 1X BUCK SG >= 0.42 | WOOD |
| B | 2X BUCK SG >= 0.42 | WOOD |
| C | 1/4" MAX. SHIM SPACE | - |
| D | 1/4" X 2-3/4" PFH ELCO OR ITW CONCRETE SCREW | - |
| E | MASONRY - 3,192 PSI MIN. CONCRETE CONFORMING TO ACI 301 OR HOLLOW BLOCK CONFORMING TO ASTM C90 | CONCRETE |
| F | #8 X 1-3/4" PPH WOOD SCREW | STEEL |
| G | #8 X 2" PFH WOOD SCREW | STEEL |
| J | 1/4" X 2-1/4" PFH ELCO OR ITW CONCRETE SCREW | STEEL |
| K | 1/4" X 3-1/4" PFH ELCO OR ITW CONCRETE SCREW | STEEL |
| 1 | FRAME JAMB* | PVC |
| 2 | SILL* | PVC |
| 3 | FRAME HEAD* | PVC |
| 5 | SASH STILE* | PVC |
| 6 | GLAZING BEAD* | PVC |
| 7 | KEEPER RAIL UPPER SASH* | PVC |
| 8 | REINFORCEMENT (6005-T5) | ALUM |
| 9 | LOCK RAIL LOWER SASH* | PVC |
| 11 | TOP RAIL UPPER SASH* | PVC |
| 12 | BOTTOM RAIL LOWER SASH* | PVC |
| 14 | SILL DAM EXTENDER | PVC |
| 16 | WEATHERSTRIP ULTRA FAB .270 PILE - 270 -1875B | - |
| 17 | WEATHERSTRIP SILLBULB (AMESBURY 32690) | - |
| 18 | REINFORCEMENT (6005-T5) | ALUM |
| 19 | HEAD ADAPTER* | PVC |
| 20 | LOCK 8513 / 8845 LAWRENCE* | PVC |
| 21 | KEEPER 2700/214 LAWRENCE* | PVC |
| 23 | #6 X 1-1/2" PFH (VINYL LOCK SCREWS) | STEEL |
| 24 | TOP SASH TILT LATCH - ASHLAND* | PVC |
| 25 | BOTTOM SASH IMPACT TILT LATCH - ASHLAND | - |
| 26 | #8 X 1" TEK SCREW | STEEL |
| 28 | PIVOT BAR - CALDWELL | - |
| 28A | PIVOT BAR - STAINLESS STEEL OPTION | - |
| 29 | #8 X 1/2" SELF TAPPING PPH SMS | STEEL |

* THE APPROVED WHITE RIGID PVC EXTERIOR EXTRUSIONS FOR WINDOWS ARE TO BE PRODUCED BY EXTRUDERS LICENSEES IN "AAMA CERTIFICATION PROGRAMS FOR RIGID PVC EXTRUSIONS".



Documents Prepared By: **RW** BUILDING CONSULTANTS, INC.
P.O. Box 230 Valrico FL, 33595
Phone No.: 813.659.9197
Florida Board of Professional Engineers
Certificate Of Authorization No. 9813
Lyndon F. Schmidt, P.E. No. 43409

PRODUCT: 8800 SERIES Vinyl Double Hung Window
PART OR ASSEMBLY: BILL OF MATERIALS COMPONENTS & GLAZING DETAILS

| NO. | DATE | UPDATE | FRAME | SIZE | DP | GLZ | LFS | BY |
|-----|---------|--------|-------|------|----|-----|-----|----|
| 1 | 4/02/13 | | | | | | | |

REVISIONS

DATE: 8/2/12
SCALE: N.T.S.
DWG. BY: JK
CHK. BY: LFS
DRAWING NO.: FL-15819.2
SHEET 6 OF 6

© 2012 R.W. BUILDING CONSULTANTS INC.