

# WINCORE™

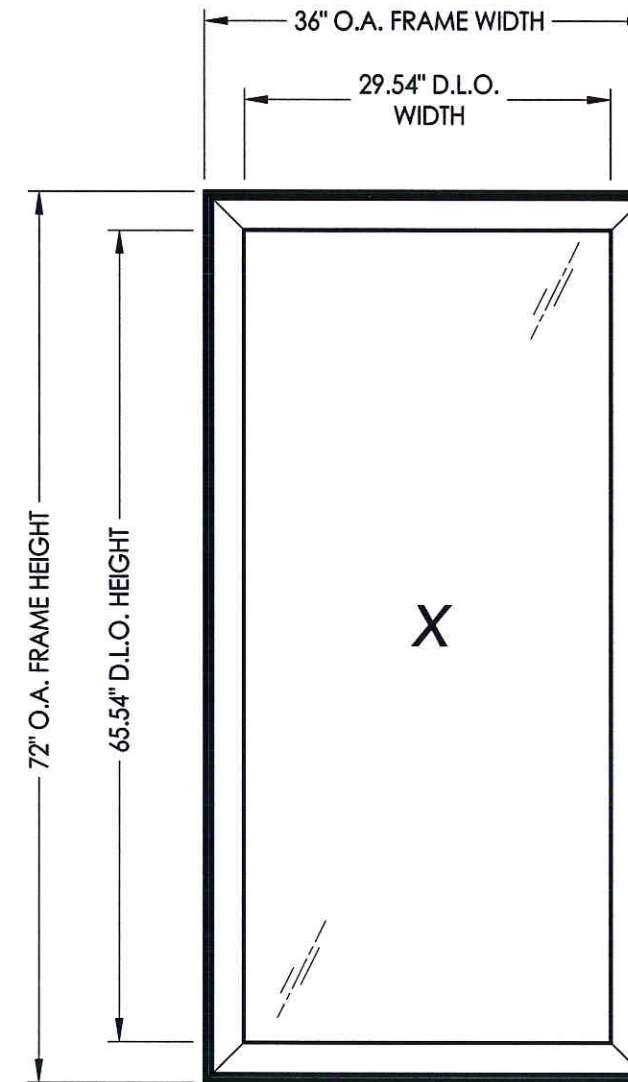
## WINDOWS & DOORS

250 Staunton Turnpike, Parkersburg, WV 26104

### 8800 Series Vinyl Outswing Casement Window "IMPACT"

#### GENERAL NOTES

1. This product has been evaluated and is in compliance with the 2010 Florida Building Code (FBC) structural requirements excluding the "High Velocity Hurricane Zone" (HVHZ).
2. Product anchors shall be as listed and spaced as shown on details. Anchor embedment to base material shall be beyond wall dressing or stucco.
3. When used in areas requiring wind borne debris protection this product complies with Section 1609.1.2 of the FBC and does not require an impact resistant covering. This product meets missile level "D" and includes Wind Zone 4 as defined in ASTM E1996 and Section 1609.1.2.4 of the FBC.
4. For 2x stud framing construction, anchoring of these units shall be the same as that shown for 2x buck masonry construction.
5. Site conditions that deviate from the details of this drawing require further engineering analysis by a licensed engineer or registered architect.



MAX. FRAME DIMENSION	MAX. D.L.O. DIMENSION	GLASS TYPE	DESIGN PRESSURE (PSF)	
			POSITIVE	NEGATIVE
36.0" X 72.0"	29.54" X 65.54"	G1	+50.0	-50.0
		G2	+55.0	-55.0
		G3	+65.0	-70.0

TABLE OF CONTENTS	
SHEET#	DESCRIPTION
1	Typical elevations, design pressures and general notes
2	Horizontal & vertical cross sections
3	Horizontal & vertical cross sections
4	Buck and frame anchoring (Max D.P. = 50 psf)
5	Buck and frame anchoring (Max D.P. = 70 psf)
6	Bill of materials, components and glazing details

Documents Prepared By:  
**RW** BUILDING CONSULTANTS, INC.  
 P.O. Box 230 Vairico FL 33595  
 Phone No.: 813.659.9197  
 Florida Board of Professional Engineers  
 Certificate Of Authorization No. 9813  
*LFS* 5-1-13  
 Lyndon F. Schmidt, P.E. No. 43409

PRODUCT: 8800 SERIES Vinyl Outswing Casement Window  
 PART OR ASSEMBLY: TYPICAL ELEVATION, DESIGN PRESSURES & GENERAL NOTES

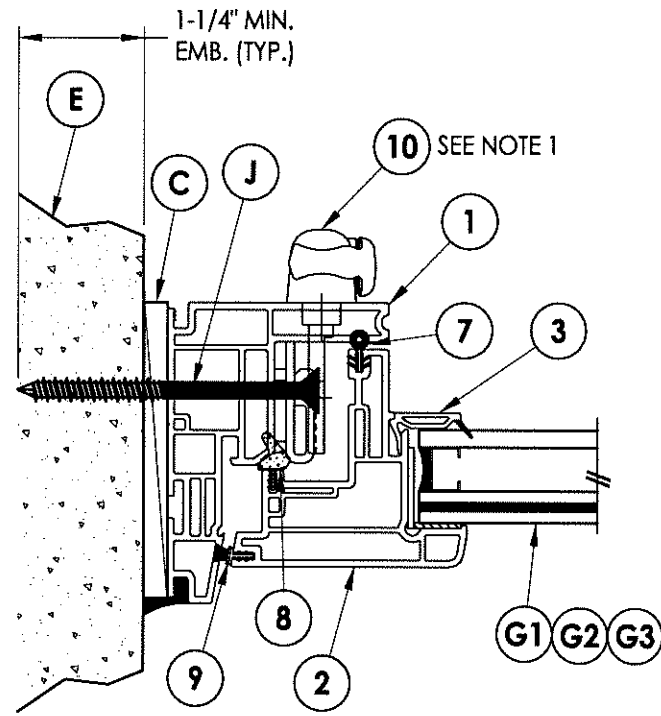
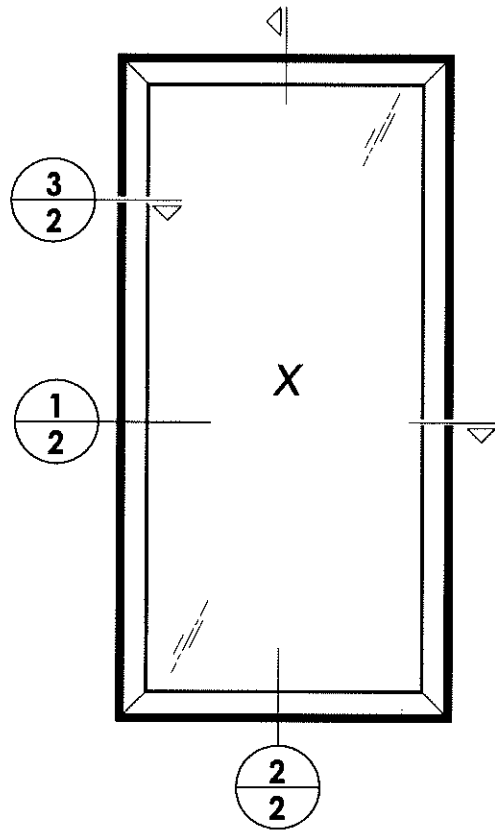
NO.	DATE	BY	REVISIONS
1	4/04/13	LFS	UPDATED D.P./GLAZING

DATE: 8/2/12  
 SCALE: N.T.S.  
 DWG. BY: JK  
 CHK. BY: LFS  
 DRAWING NO.: FL-15817.2  
 SHEET 1 OF 6

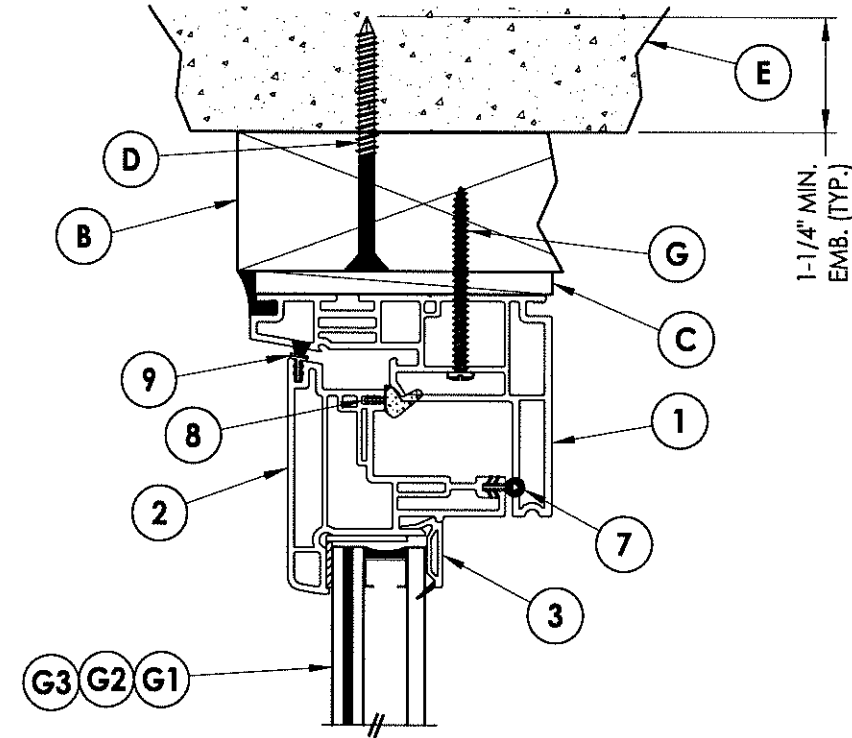
R:\A - Projects\Project Folders\Proj 1601 - 1700\VP 1677.D. RWBC Drawings\Case Awn Window\FL-15817.dwg, 2.2

NOTE:

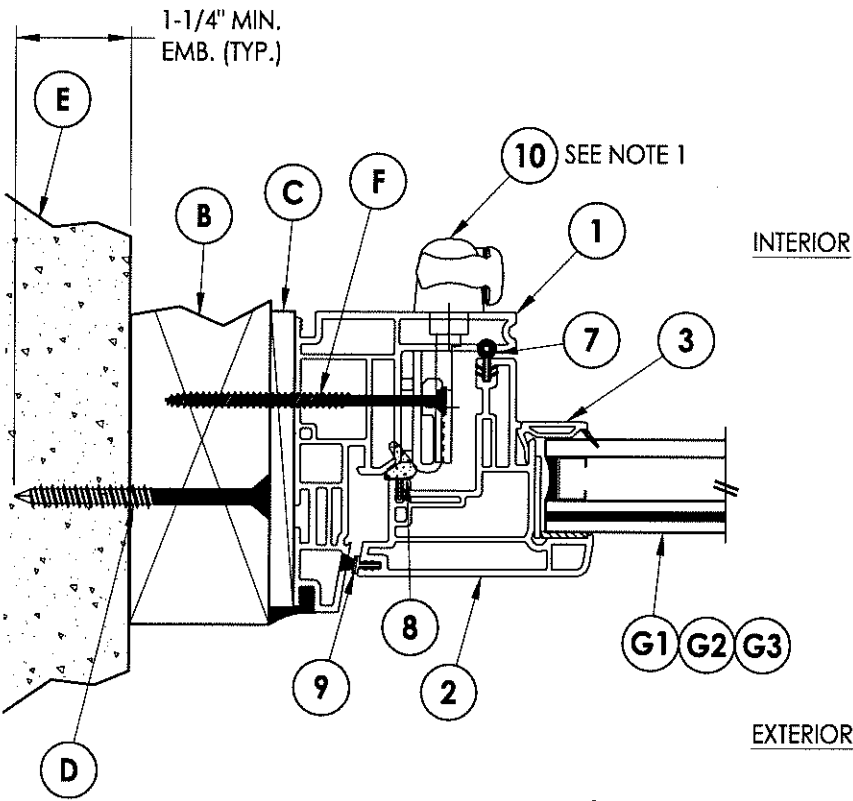
1. Multi-point locks/keepers (4) located at 4.125", 25.75", 46.5" and 66.375" from the bottom of sash.



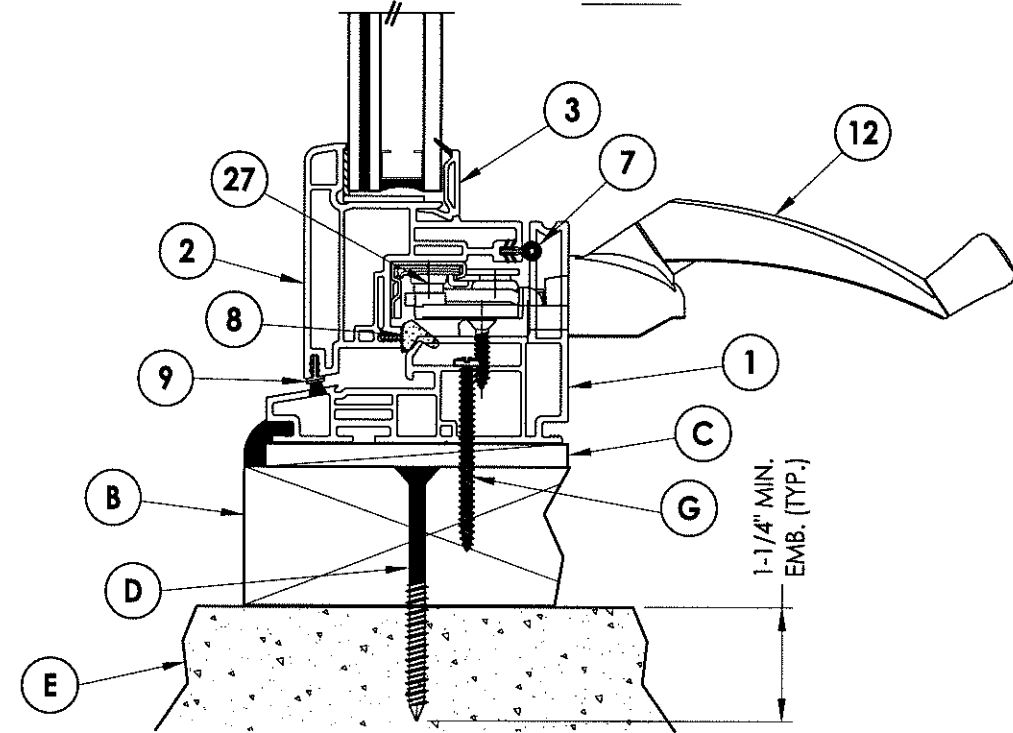
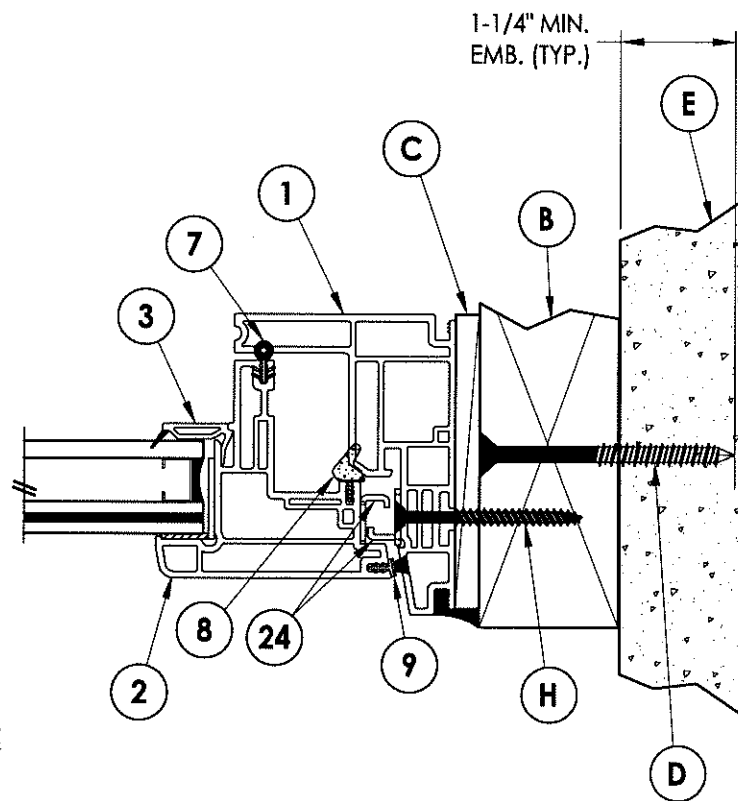
**3 HORIZONTAL CROSS SECTION**  
2 Shown Direct to Masonry



**2 HORIZONTAL CROSS SECTION**  
2 Shown Direct to Masonry



**1 HORIZONTAL CROSS SECTION**  
2 Shown w/ 2X Buck



**2 VERTICAL CROSS SECTION**  
2 Shown w/ 2X Buck

Documents Prepared By:

**RW** BUILDING CONSULTANTS, INC.  
P.O. Box 230 Valrico FL, 33595  
Phone No.: 813.659.9197  
Florida Board of Professional Engineers  
Certificate Of Authorization No. 9813  
*LFS*

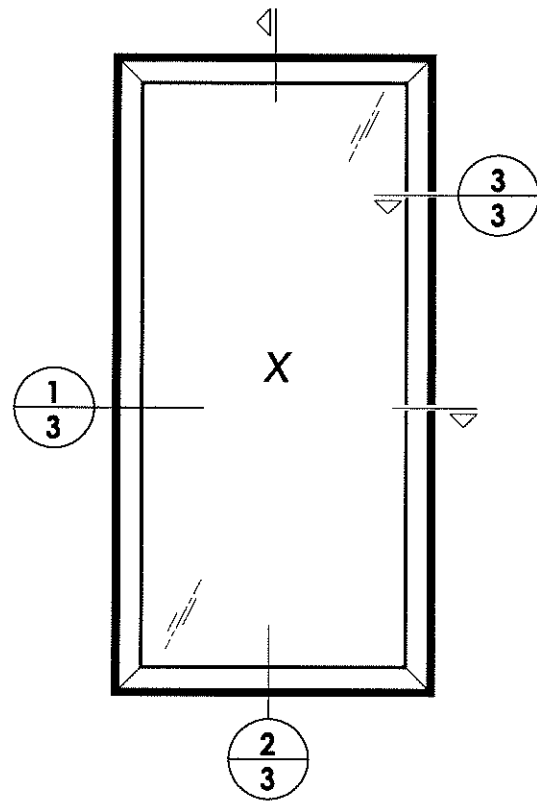
© 2012 R.W. BUILDING CONSULTANTS INC.

PRODUCT: 8800 SERIES  
Vinyl Outswinging Casement Window

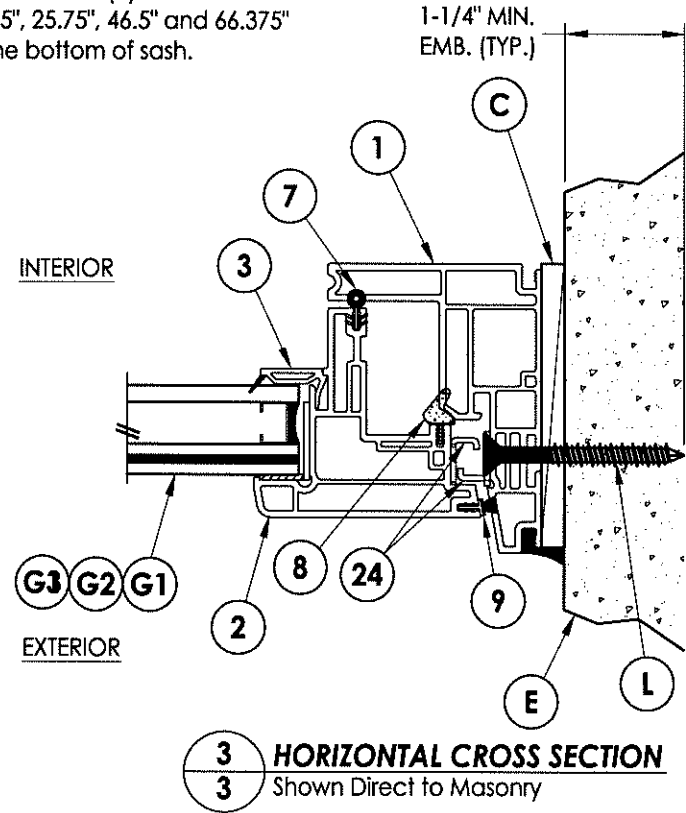
PART OR ASSEMBLY:  
HORIZONTAL & VERTICAL  
CROSS SECTIONS

NO.	DATE	REVISIONS
1	4/04/13	UPDATED D.P./GLAZING
LFS		BY

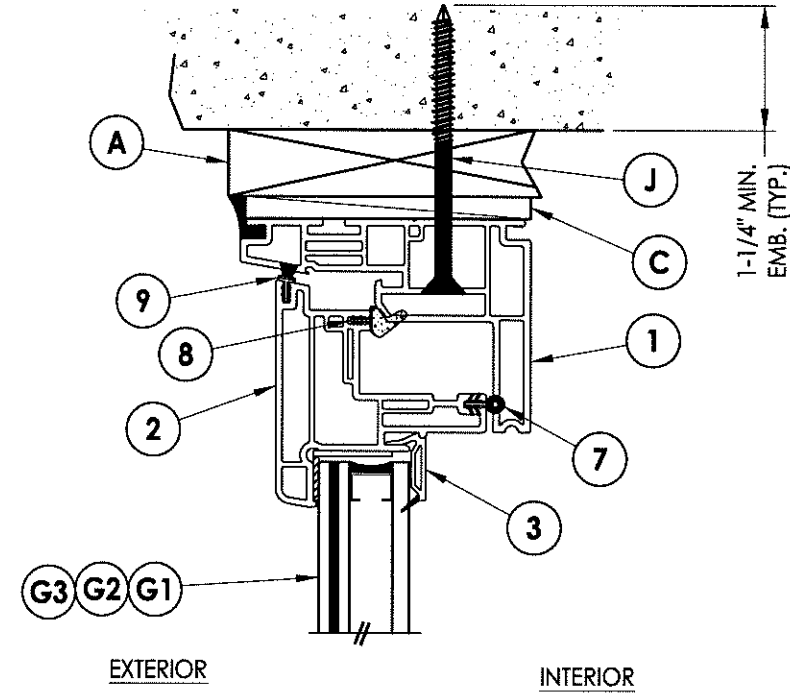
DATE: 8/2/12  
SCALE: N.T.S.  
DWG. BY: JK  
CHK. BY: LFS  
DRAWING NO.: FL-15817.2  
SHEET 2 OF 6



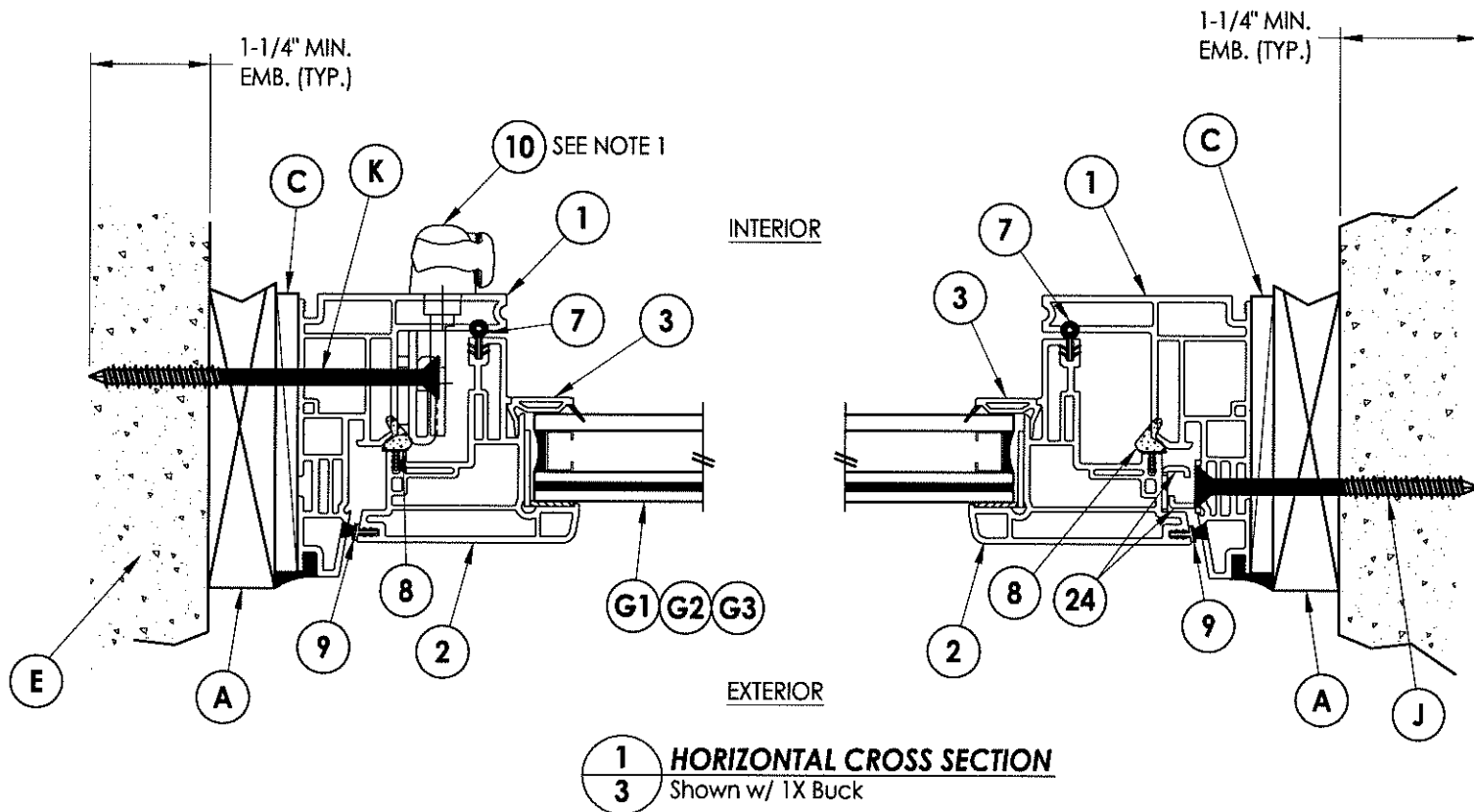
NOTE:  
 1. Multi-point locks (4) located at 4.125", 25.75", 46.5" and 66.375" from the bottom of sash.



**3 HORIZONTAL CROSS SECTION**  
 3 Shown Direct to Masonry



**2 VERTICAL CROSS SECTION**  
 3 Shown w/ 1X Buck @ head & Direct to Masonry @ sill



**1 HORIZONTAL CROSS SECTION**  
 3 Shown w/ 1X Buck

Documents Prepared By:

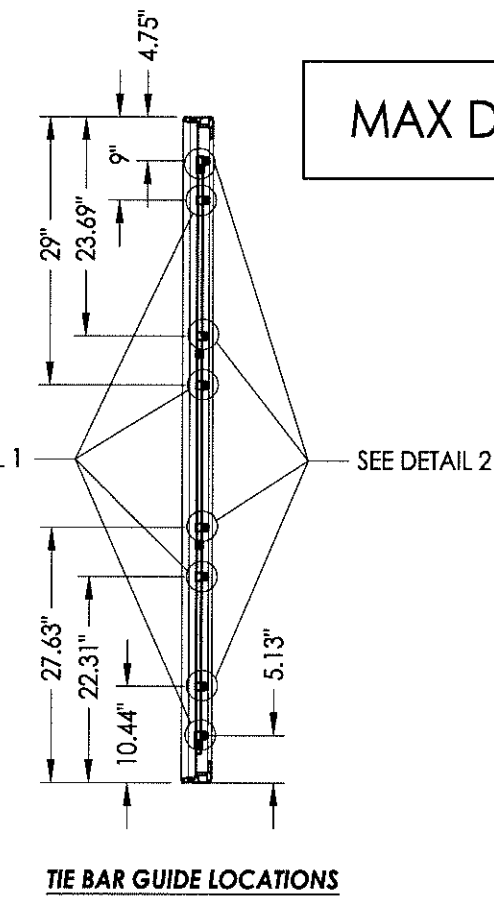
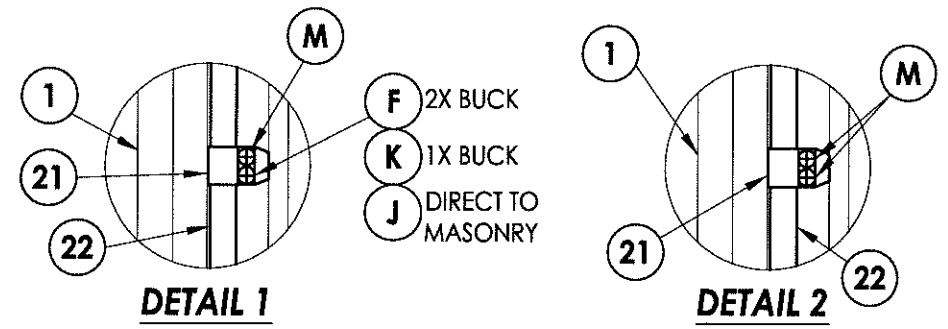
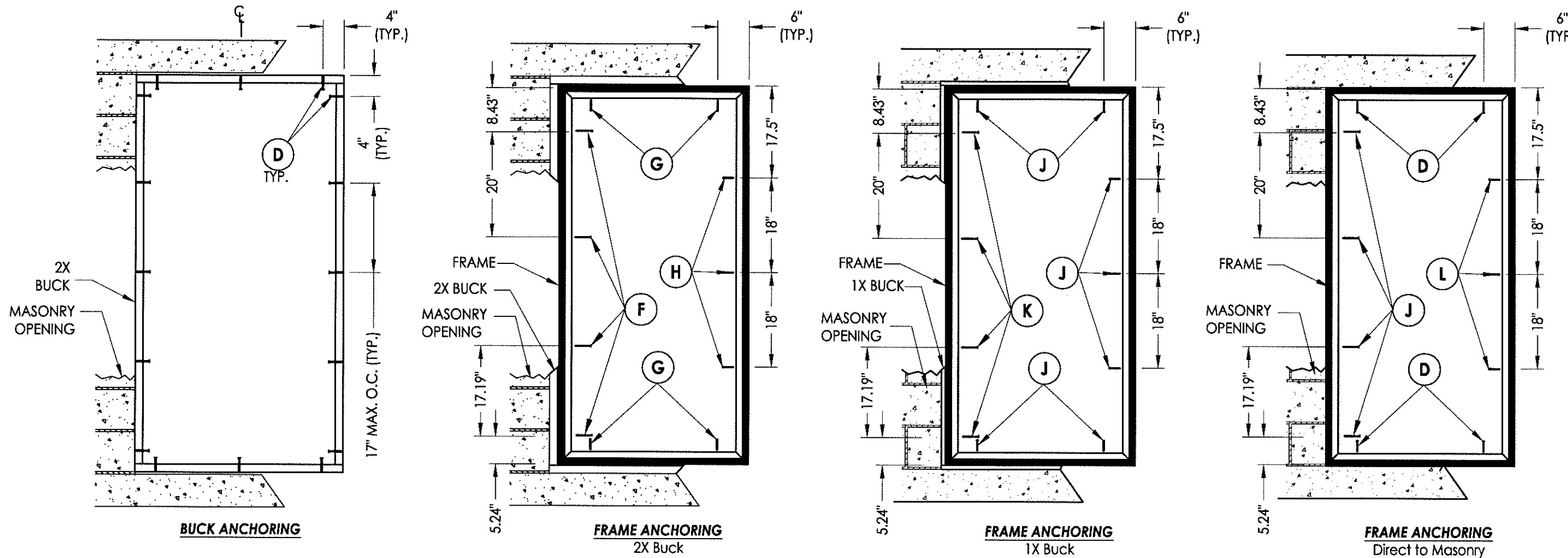
**RW** BUILDING CONSULTANTS, INC.  
 P.O. Box 230 Valrico FL 33595  
 Phone No.: 813.659.9197  
 Florida Board of Professional Engineers  
 Certificate Of Authorization No. 9813  
*LFS*

Lyndon F. Schmidt, P.E. No. 43409

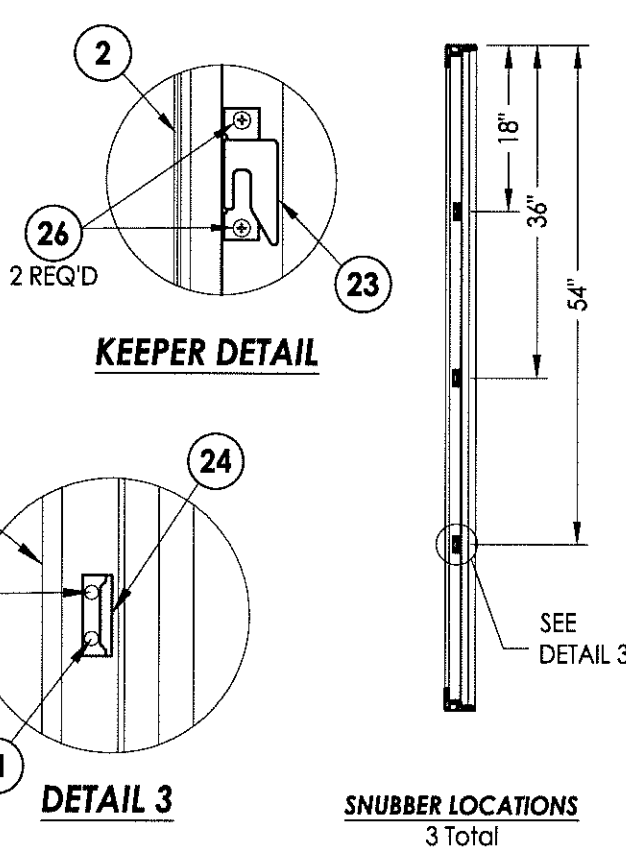
PRODUCT: 8800 SERIES Vinyl Outswing Casement Window  
 PART OR ASSEMBLY: HORIZONTAL & VERTICAL CROSS SECTIONS

NO.	DATE	UPDATED D.P./GLAZING	LFS	BY
1	4/04/13			

DATE: 8/2/12  
 SCALE: N.T.S.  
 DWG. BY: JK  
 CHK. BY: LFS  
 DRAWING NO.: FL-15817.2  
 SHEET 3 OF 6



MAX D.P. = 50 PSF



- CONCRETE ANCHOR NOTES:**
1. Substitution of equal concrete anchors from a different supplier may have different edge distance and center distance requirements.
  2. Concrete anchor locations at the corners may be adjusted to maintain the min. edge distance to mortar joints. If concrete anchor locations noted as "MAX. ON CENTER" must be adjusted to maintain the min. edge distance to mortar joints, additional concrete anchors may be required to ensure the "MAX. ON CENTER" dimensions are not exceeded.
  3. Concrete anchor table:

ANCHOR TYPE	ANCHOR SIZE	MIN. EMBEDMENT	MIN. CLEARANCE TO MASONRY EDGE	MIN. CLEARANCE TO ADJACENT ANCHOR
ITW	1/4"	1-1/4"	2-1/2"	3"
ELCO	1/4"	1-1/4"	1"	4"

Documents Prepared By: **RW** BUILDING CONSULTANTS, INC.  
 P.O. Box 230 Vero Beach, FL 33595  
 Phone No.: 813.659.9197  
 Florida Board of Professional Engineers  
 Certificate of Authorization No. 9813  
 Lyndon F. Schmidt, P.E. No. 43409

PRODUCT: 8800 SERIES Vinyl Outswing Casement Window  
 PART OR ASSEMBLY: BUCK AND FRAME ANCHORING (MAX D.P. = 50 PSF)

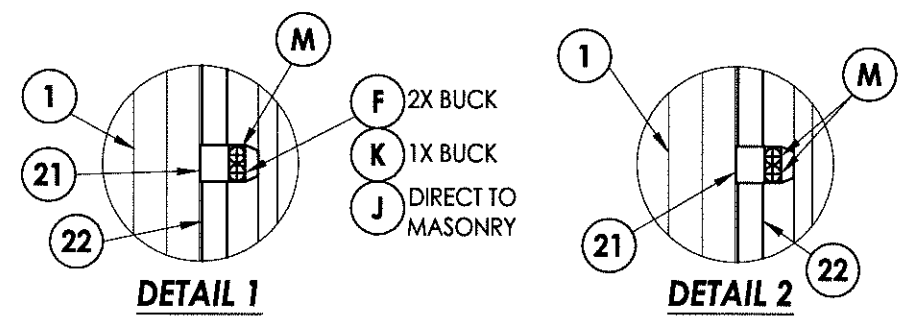
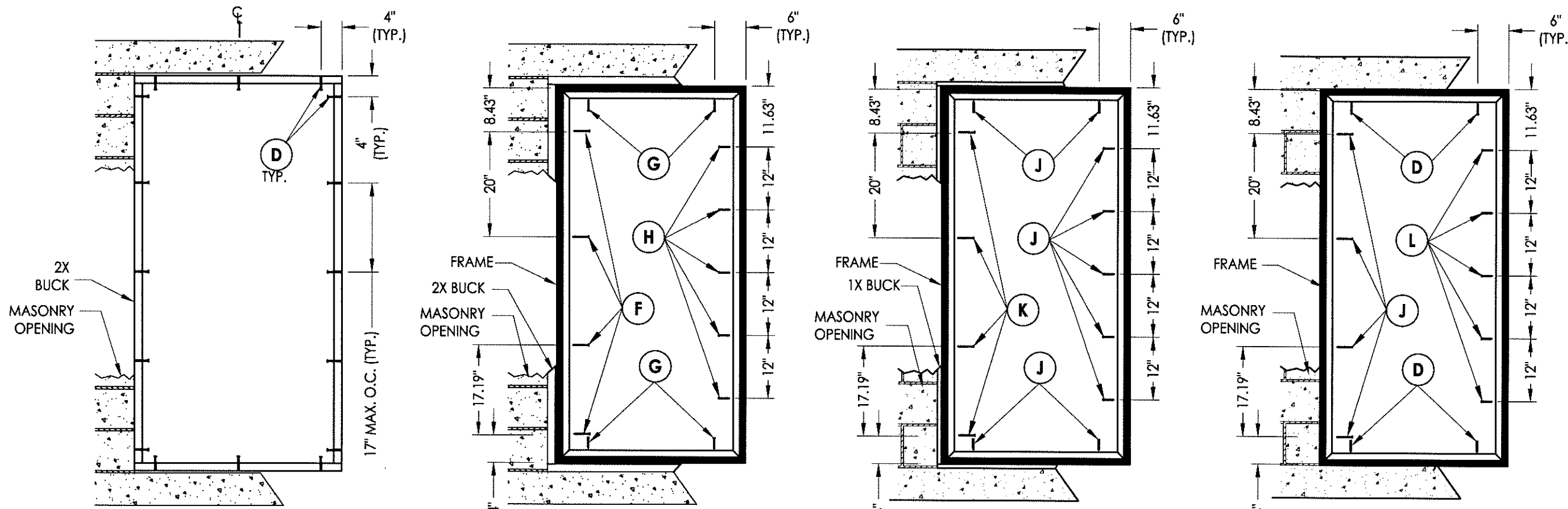
NO.	DATE	DESCRIPTION	BY
1	4/04/13	UPDATED D.P./GLAZING	LFS

REVISIONS

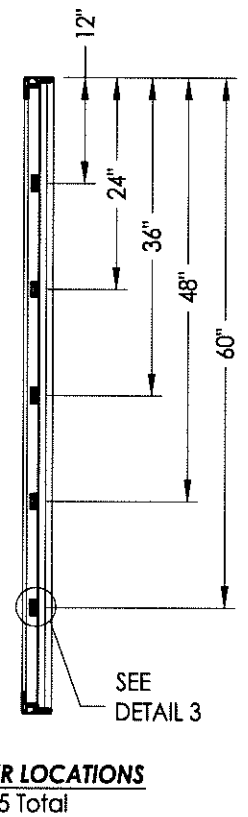
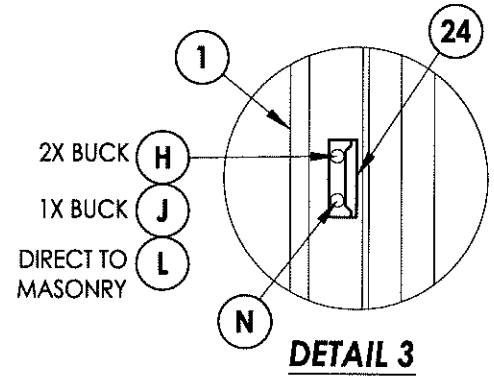
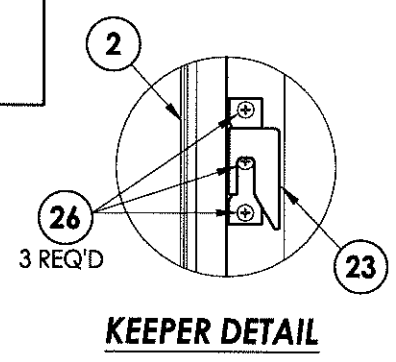
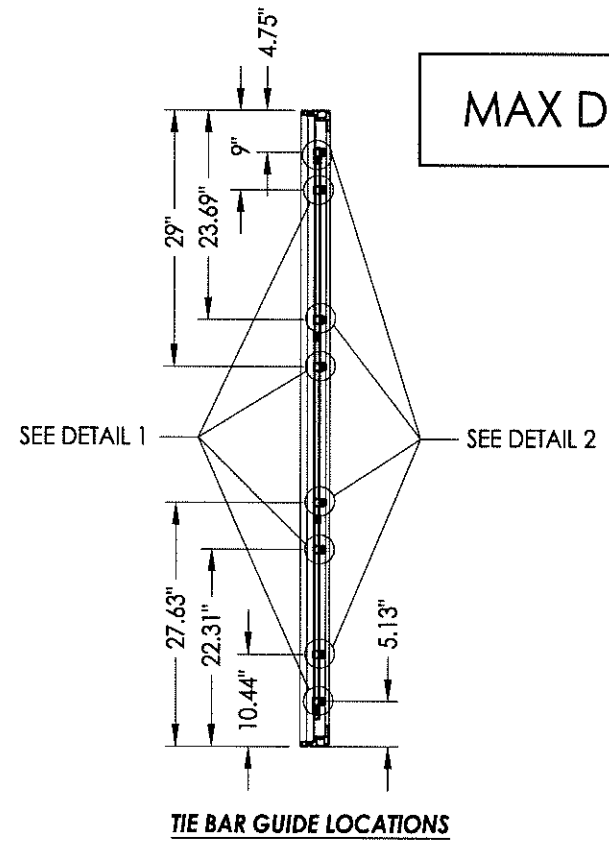
DATE: 8/2/12  
 SCALE: N.T.S.  
 DWG. BY: JK  
 CHK. BY: LFS  
 DRAWING NO.: FL-15817.2  
 SHEET 4 OF 6

© 2012 R.W. BUILDING CONSULTANTS INC.





MAX D.P. = 70 PSF



- CONCRETE ANCHOR NOTES:**
1. Substitution of equal concrete anchors from a different supplier may have different edge distance and center distance requirements.
  2. Concrete anchor locations at the corners may be adjusted to maintain the min. edge distance to mortar joints. If concrete anchor locations noted as "MAX. ON CENTER" must be adjusted to maintain the min. edge distance to mortar joints, additional concrete anchors may be required to ensure the "MAX. ON CENTER" dimensions are not exceeded.
  3. Concrete anchor table:

ANCHOR TYPE	ANCHOR SIZE	MIN. EMBEDMENT	MIN. CLEARANCE TO MASONRY EDGE	MIN. CLEARANCE TO ADJACENT ANCHOR
ITW	1/4"	1-1/4"	2-1/2"	3"
ELCO	1/4"	1-1/4"	1"	4"

Documents Prepared By: **RW** BUILDING CONSULTANTS, INC.  
 P.O. Box 230 Valrico FL 33595  
 Phone No.: 813.659.9197  
 Florida Board of Professional Engineers  
 Certificate of Authorization No. 9813  
 Lyndon F. Schmidt, P.E. No. 43409

PRODUCT: 8800 SERIES Vinyl Outswing Casement Window  
 PART OR ASSEMBLY: BUCK AND FRAME ANCHORING (MAX D.P. = 70 PSF)

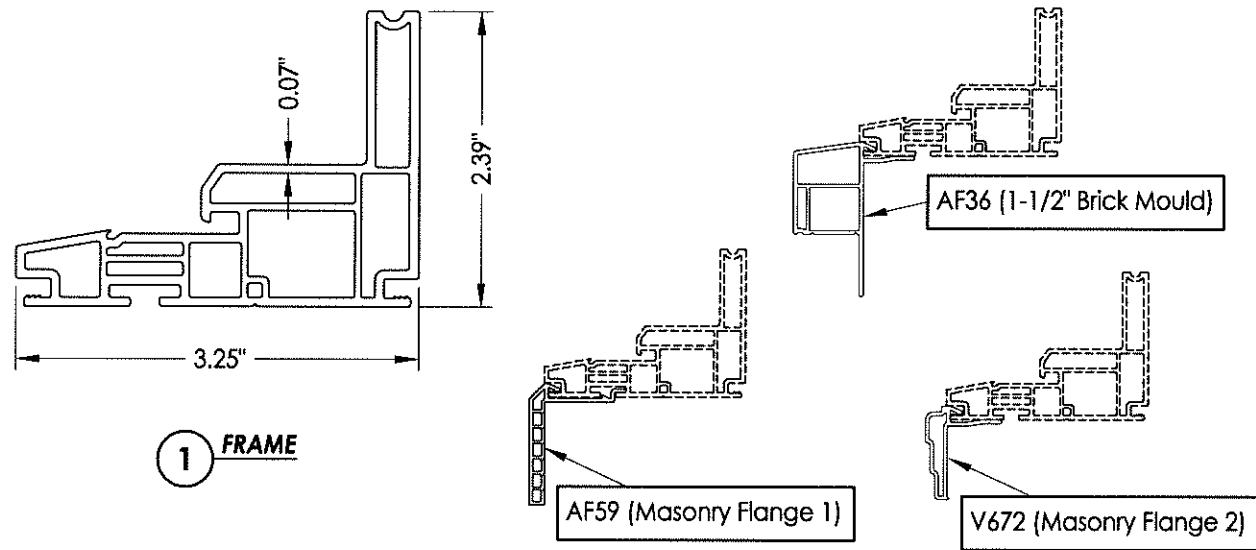
NO.	DATE	BY	REVISIONS
1	4/04/13	LFS	UPDATED D.P./GLAZING

DATE: 8/2/12  
 SCALE: N.T.S.  
 DWG. BY: JK  
 CHK. BY: LFS  
 DRAWING NO.: FL-15817.2  
 SHEET 5 OF 6

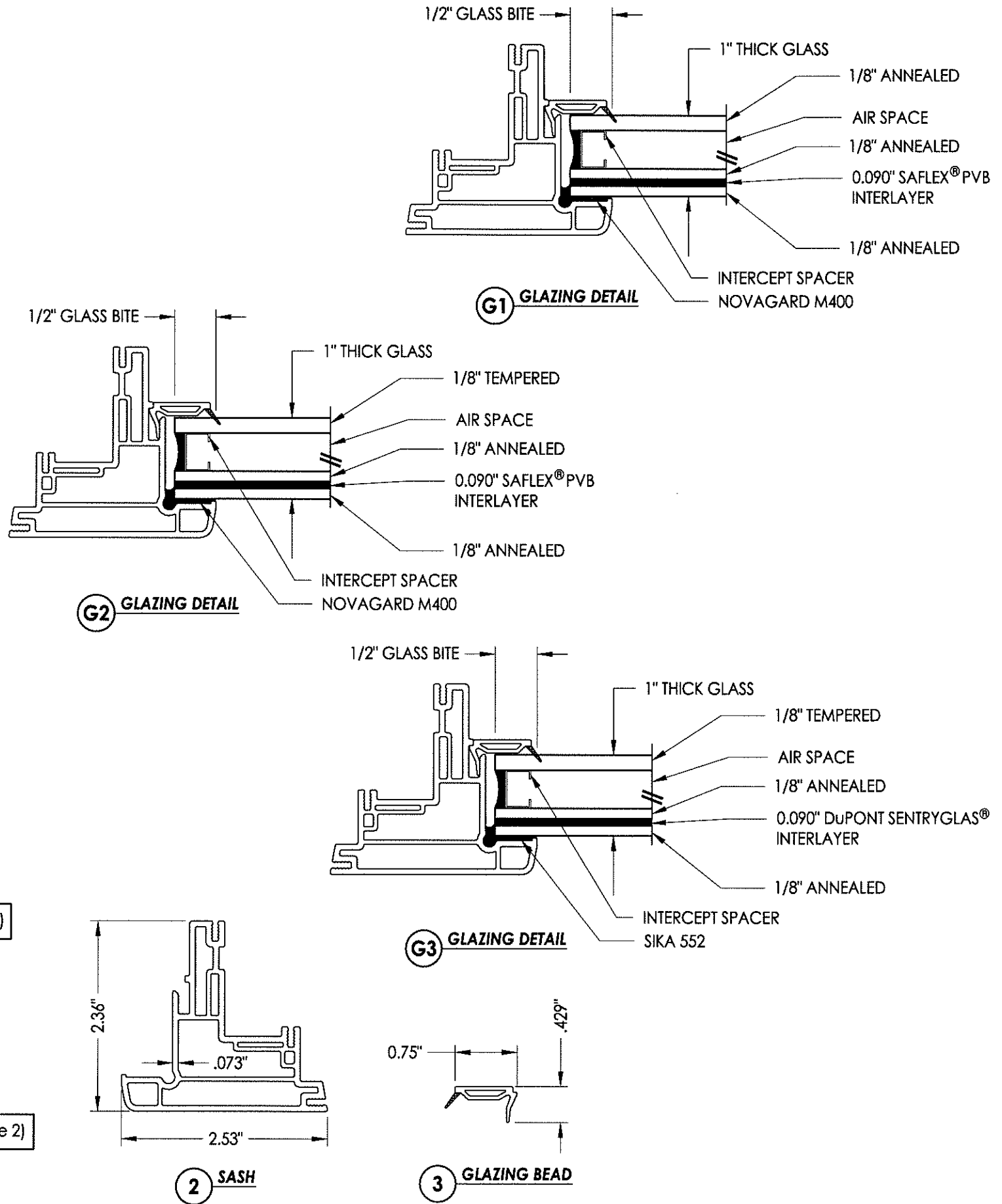
© 2012 R.W. BUILDING CONSULTANTS INC.

BILL OF MATERIALS		
ITEM #	DESCRIPTION	MATERIAL
A	1X BUCK SG >= 0.42	WOOD
B	2X BUCK SG >= 0.42	WOOD
C	1/4" MAX. SHIM SPACE	-
D	1/4" X 2-3/4" PFH ELCO OR ITW CONCRETE SCREW	STEEL
E	MASONRY - 3,192 PSI MIN. CONCRETE CONFORMING TO ACI 301 OR HOLLOW BLOCK CONFORMING TO ASTM C90	CONCRETE
F	#8 X 3" PFH WOOD SCREW	STEEL
G	#8 X 2" PPH WOOD SCREW	STEEL
H	#8 X 2" PFH WOOD SCREW	STEEL
J	1/4" X 3-1/4" PFH ELCO OR ITW CONCRETE SCREW	STEEL
K	1/4" X 4" PFH ELCO OR ITW CONCRETE SCREW	STEEL
L	1/4" X 2-1/4" PFH ELCO OR ITW CONCRETE SCREW	STEEL
M	#8 X 1-1/4" PFH WOOD SCREW	STEEL
N	#8 X 5/8" PFH SMS	STEEL
1	FRAME*	PVC
2	SASH*	PVC
3	GLAZING BEAD*	PVC
7	WEATHERSTRIP AMESBURY (CS 120 33-SEAL)	FOAM
8	WEATHERSTRIP AMESBURY (12300 SEAL)	VINYL
9	WEATHERSTRIP ULTRA FAB .250 (PILE - 250 - KP52)	VINYL
10	MULTI-POINT LOCK (TRUTH) 24.33.32.004	-
12	OPERATOR HANDLE (TRUTH) 50.10.00.011	-
21	TIE BAR GUIDE (TRUTH) 32384	-
22	TIE BAR (TRUTH) 12926	-
23	KEEPER (TRUTH)	-
24	SNUBBER (TRUTH) (SASH/FRAME) 22999	-
26	#8 X 1/2" TRUSS HEAD SMS	S.S.
27	OPERATOR (TRUTH STANDARD, MAX. CLEAR OR STAINLESS STEEL)	STEEL

\* THE APPROVED WHITE RIGID PVC EXTERIOR EXTRUSIONS FOR WINDOWS ARE TO BE PRODUCED BY EXTRUDERS LICENSEES IN "AAMA CERTIFICATION PROGRAMS FOR RIGID PVC EXTRUSIONS".



OPTIONAL COSMETIC FLANGES



Documents Prepared By:  
**RW** BUILDING CONSULTANTS, INC.  
 P.O. Box 230 Valrico FL 33595  
 Phone No.: 813.659.9197  
 Florida Board of Professional Engineers  
 Certificate of Authorization No. 9813  
 Lyndon F. Schmidt, P.E. No. 43409

PRODUCT: 8800 SERIES Vinyl Outswing Casement Window  
 PART OR ASSEMBLY: BILL OF MATERIALS, COMPONENTS AND GLAZING DETAIL

NO.	DATE	BY	REVISIONS
1	4/04/13	LFS	UPDATED D.P./GLAZING

DATE: 8/2/12  
 SCALE: N.T.S.  
 DWG. BY: JK  
 CHK. BY: LFS  
 DRAWING NO.: FL-15817.2  
 SHEET 6 OF 6