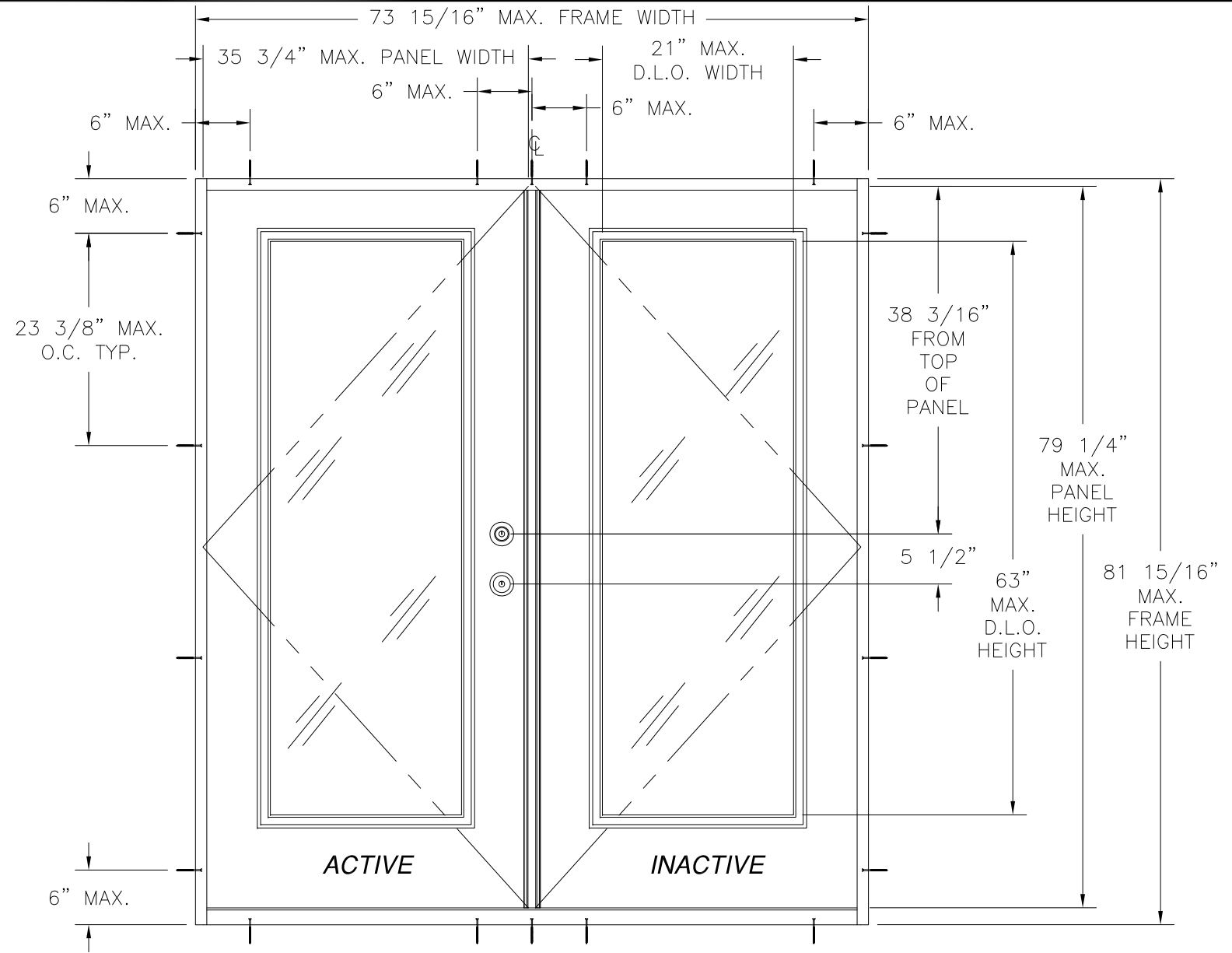


REVISIONS			
REV	DESCRIPTION	DATE	APPROVED
A	ADDED FRAME MATERIAL	2/28/11	R.L.



NOTES:

- 1) THE PRODUCT SHOWN HEREIN IS DESIGNED AND MANUFACTURED TO COMPLY WITH REQUIREMENTS OF FLORIDA BUILDING CODE.
- 2) WOOD FRAMING AND MASONRY OPENING TO BE DESIGNED AND ANCHORED TO PROPERLY TRANSFER ALL LOADS TO STRUCTURE. WOOD FRAMING AND MASONRY OPENING IS THE RESPONSIBILITY OF THE ARCHITECT OR ENGINEER OF RECORD.
- 3) 1X BUCK OVER MASONRY/CONCRETE IS OPTIONAL. WHERE 1X BUCK IS NOT USED DISSIMILAR MATERIALS MUST BE SEPARATED WITH APPROVED COATING OR MEMBRANE. SELECTION OF COATING OR MEMBRANE IS THE RESPONSIBILITY OF THE ARCHITECT OR ENGINEER OF RECORD.
- 4) APPROVED IMPACT PROTECTIVE SYSTEM IS REQUIRED FOR THIS PRODUCT IN WIND BORNE DEBRIS REGIONS.
- 5) UNITS MUST BE GLAZED PER ASTM E1300.
- 6) ALLOWABLE STRESS INCREASE OF 1/3 WAS NOT USED IN THE DESIGN OF THE PRODUCT SHOWN HEREIN. WIND LOAD DURATION FACTOR Cd=1.6 WAS USED FOR WOOD ANCHOR CALCULATIONS.
- 7) SHIM AS REQUIRED AT EACH INSTALLATION ANCHOR WITH LOAD BEARING SHIM. SHIM WHERE SPACE OF 1/16" OR GREATER OCCURS. MAXIMUM ALLOWABLE SHIM STACK TO BE 1/4".
- 8) FOR ANCHORING INTO 2X BUCK OR WOOD FRAMING AT HEAD AND JAMBS USE #8 WOOD SCREW OF SUFFICIENT LENGTH TO ACHIEVE A 1 3/16" MINIMUM EMBEDMENT INTO SUBSTRATE. AT SILL USE #10 WOOD SCREW OF SUFFICIENT LENGTH TO ACHIEVE A 1 3/8" MINIMUM EMBEDMENT INTO SUBSTRATE LOCATE ANCHORS AS SHOWN IN ANCHORING LAYOUT AND INSTALLATION DETAILS.
- 9) FOR ANCHORING INTO MASONRY/CONCRETE USE 3/16" ITW TAPCON OF SUFFICIENT LENGTH TO ACHIEVE A 1 1/4" MINIMUM EMBEDMENT INTO SUBSTRATE WITH 2 5/8" MINIMUM EDGE DISTANCE. LOCATE ANCHORS AS SHOWN IN ANCHORING LAYOUT AND INSTALLATION DETAILS.
- 10) ALL FASTENERS TO BE CORROSION RESISTANT.
- 11) INSTALLATION ANCHOR CAPACITIES FOR PRODUCTS HEREIN ARE BASED ON SUBSTRATE MATERIAL WITH THE FOLLOWING PROPERTIES:
 A. WOOD - G=0.42 MINIMUM SPECIFIC GRAVITY
 B. CONCRETE - 2,000PSI MINIMUM COMPRESSIVE STRENGTH.
 C. MASONRY - STRENGTH CONFORMANCE TO ASTM C-90, GRADE N, TYPE 1 (OR GREATER).
- 12) FRAME MATERIAL: WOOD WITH G .5 MINIMUM SPECIFIC GRAVITY OR COMPOSITE FRAME (PLAST PRO POLY FIBER).
- 13) DOOR PANEL MATERIAL: .075" THICK FIBERGLASS WITH PVC TOP AND BOTTOM RAILS AND LAMINATED WOOD STILES.

PLASTPRO INSERT GLAZED FIBERGLASS 6'8 IS DOUBLE DOOR

WITH ULTIMATE ASTRAGAL

WHERE WATER IS NOT REQUIRED

DESIGN PRESSURE RATING	IMPACT RATING
±25.0 PSF	NONE

WHERE WATER IS REQUIRED

DESIGN PRESSURE RATING	IMPACT RATING
+20.0 PSF -25.0 PSF	NONE

WITH ULTIMATE HURRICANE ASTRAGAL

WHERE WATER IS NOT REQUIRED

DESIGN PRESSURE RATING	IMPACT RATING
±35.0 PSF	NONE

WHERE WATER IS REQUIRED

DESIGN PRESSURE RATING	IMPACT RATING
+20.0 PSF -35.0 PSF	NONE

EXTERIOR VIEW

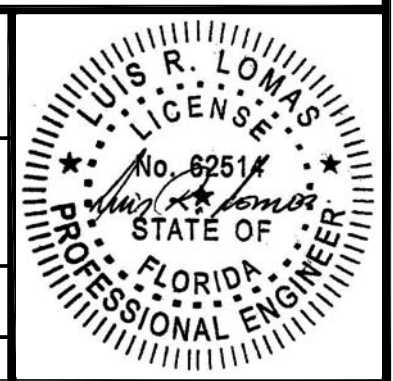
TABLE OF CONTENTS

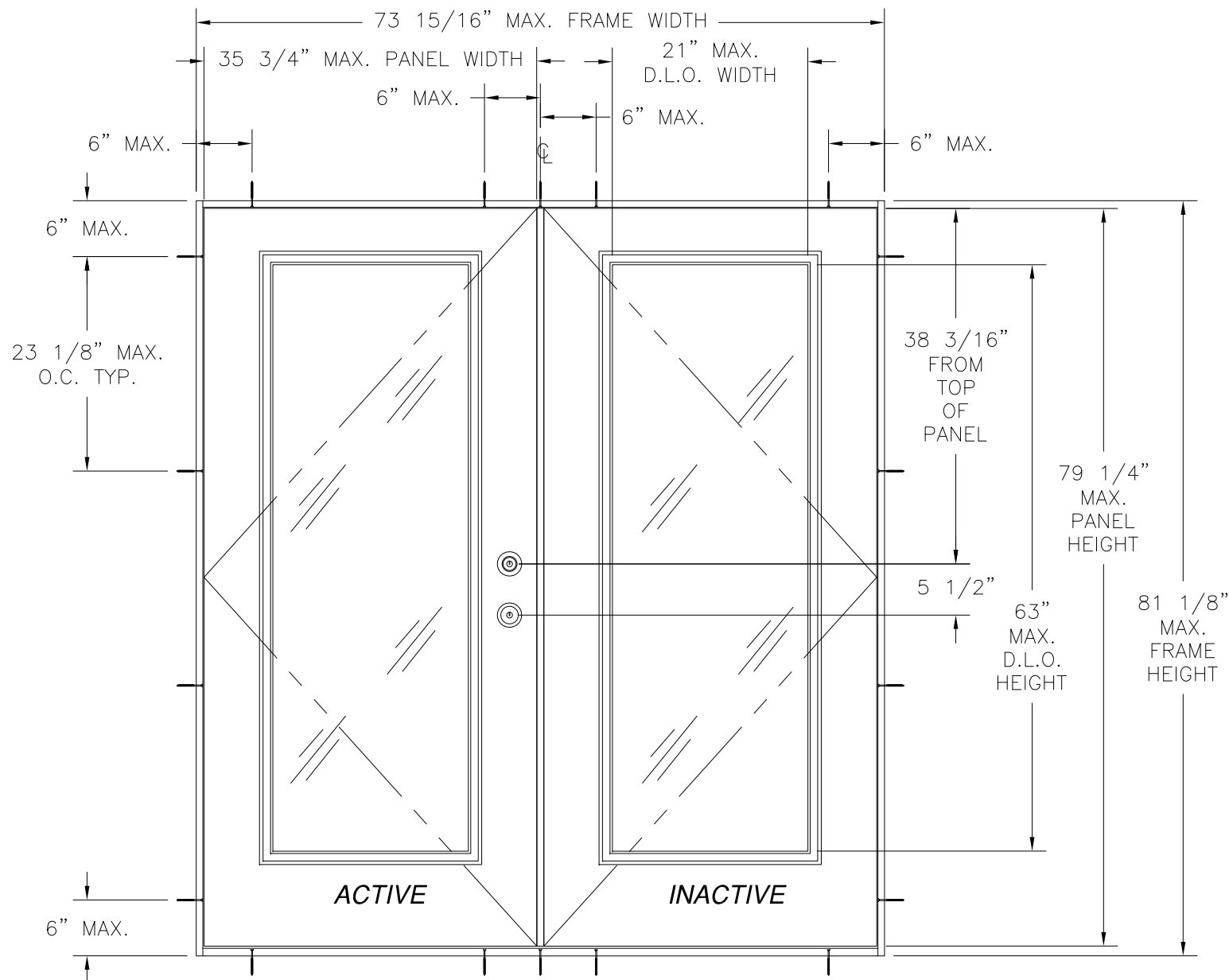
SHEET NO.	DESCRIPTION
1 - 4	ELEVATIONS, ANCHORING LAYOUTS AND NOTES
5 - 8	INSTALLATION DETAILS
9	APPROVED SILLS AND ASTRAGAL DETAILS

WINCORE WINDOW COMPANY, LLC
 250 STAUNTON AVE.
 PARKERSBURG, WV 26102

PLASTPRO INSERT GLAZED FIBERGLASS IS/OS
 DOUBLE DOOR - NON-IMPACT
 6'8 IS ELEVATION, ANCHORING LAYOUT AND NOTES

DRAWN: TJH	DWG NO. 08-01101	REV A
SCALE NTS	DATE 09/01/10	SHEET 1 OF 9





PLASTPRO INSERT GLAZED FIBERGLASS 6'8 OS DOUBLE DOOR
EXTERIOR VIEW

WITH ULTIMATE ASTRAGAL

DESIGN PRESSURE RATING	IMPACT RATING
±25.0 PSF	NONE

WITH ULTIMATE HURRICANE ASTRAGAL

WHERE WATER IS NOT REQUIRED

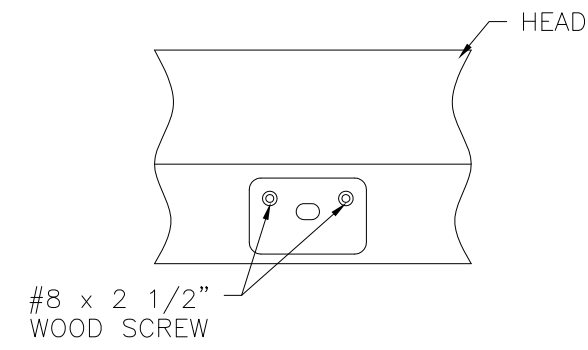
DESIGN PRESSURE RATING	IMPACT RATING
+45.0 PSF -40.0 PSF	NONE

WHERE WATER IS REQUIRED

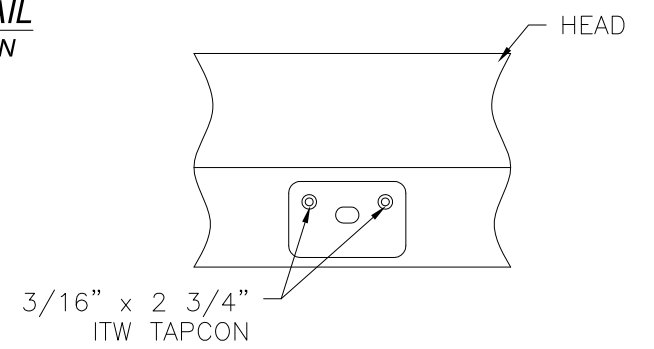
DESIGN PRESSURE RATING	IMPACT RATING
±40.0 PSF	NONE

REVISIONS			
REV	DESCRIPTION	DATE	APPROVED
A	ADDED FRAME MATERIAL	2/28/11	R.L.

HARDWARE SCHEDULE	
A.	KEYED ENTRY LOCK GRADE 2 OR BETTER
B.	DEADBOLT SET GRADE 2 OR BETTER
C.	MULTI-POINT LOCKING HARDWARE BY TRILLENIUM
D.	INSWING ULTIMATE ASTRAGAL BY ENDURA.
E.	INSWING ULTIMATE HURRICANE ASTRAGAL BY ENDURA.
F.	OUTSWING ULTIMATE ASTRAGAL BY ENDURA.
G.	OUTSWING ULTIMATE HURRICANE ASTRAGAL BY ENDURA.
H.	4" x 4" BUTT TYPE HINGE (3 PER 6'8 DOORS).
I.	4" x 4" BUTT TYPE HINGE (4 PER 8'0 DOORS).
J.	INSWING AND OUTSWING SILLS BY ENDURA, SEE SHEET 9



ASTRAGAL HEAD STRIKE DETAIL
2X BUCKWOOD FRAMING INSTALLATION
6'8 AND 8'0 UNITS

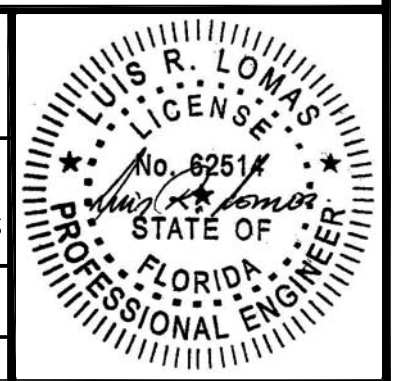


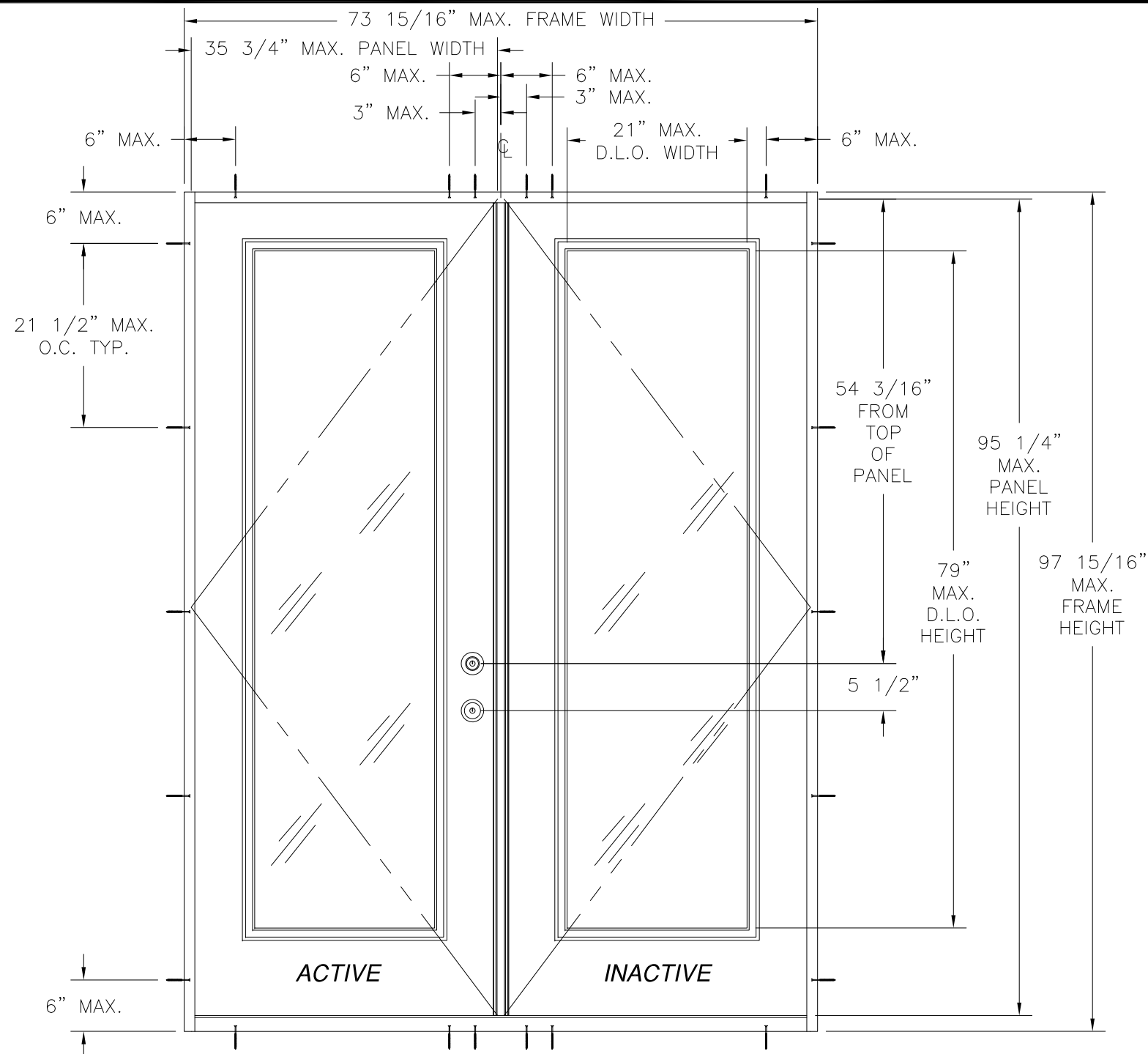
ASTRAGAL HEAD STRIKE DETAIL
MASONRY/CONCRETE INSTALLATION
6'8 AND 8'0 UNITS

WINCORE WINDOW COMPANY, LLC
250 STAUNTON AVE.
PARKERSBURG, WV 26102

PLASTPRO INSERT GLAZED FIBERGLASS IS/OS
DOUBLE DOOR – NON-IMPACT
6'8 OS ELEVATION, ANCHORING LAYOUT AND STRIKES

DRAWN: TJH	DWG NO. 08-01101	REV A
SCALE NTS	DATE 09/01/10	SHEET 2 OF 9





PLASTPRO INSERT GLAZED FIBERGLASS 8'0 IS DOUBLE DOOR
EXTERIOR VIEW

WITH ULTIMATE HURRICANE ASTRAGAL

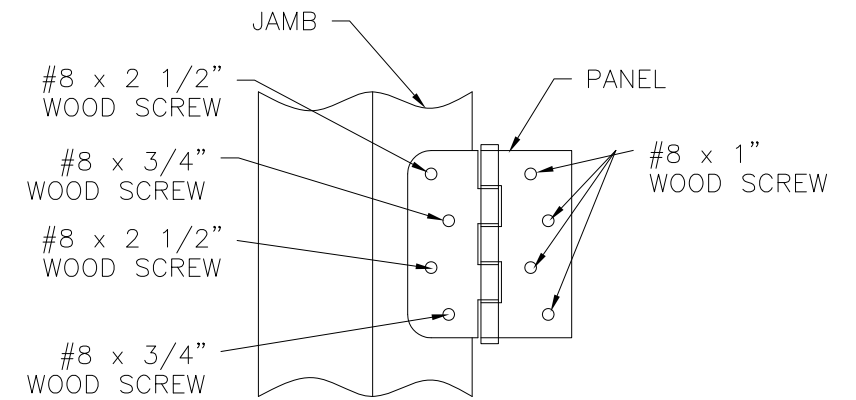
WHERE WATER IS NOT REQUIRED

DESIGN PRESSURE RATING	IMPACT RATING
+45.0 PSF -40.0 PSF	NONE

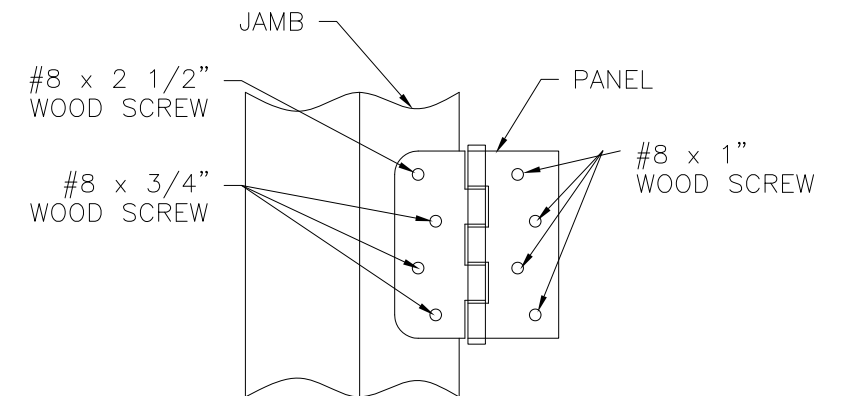
WHERE WATER IS REQUIRED

DESIGN PRESSURE RATING	IMPACT RATING
+20.0 PSF -40.0 PSF	NONE

REVISIONS			
REV	DESCRIPTION	DATE	APPROVED
A	ADDED FRAME MATERIAL	2/28/11	R.L.



TOP HINGE DETAIL
2X BUCK/WOOD FRAMING INSTALLATION
6'8 AND 8'0 UNITS



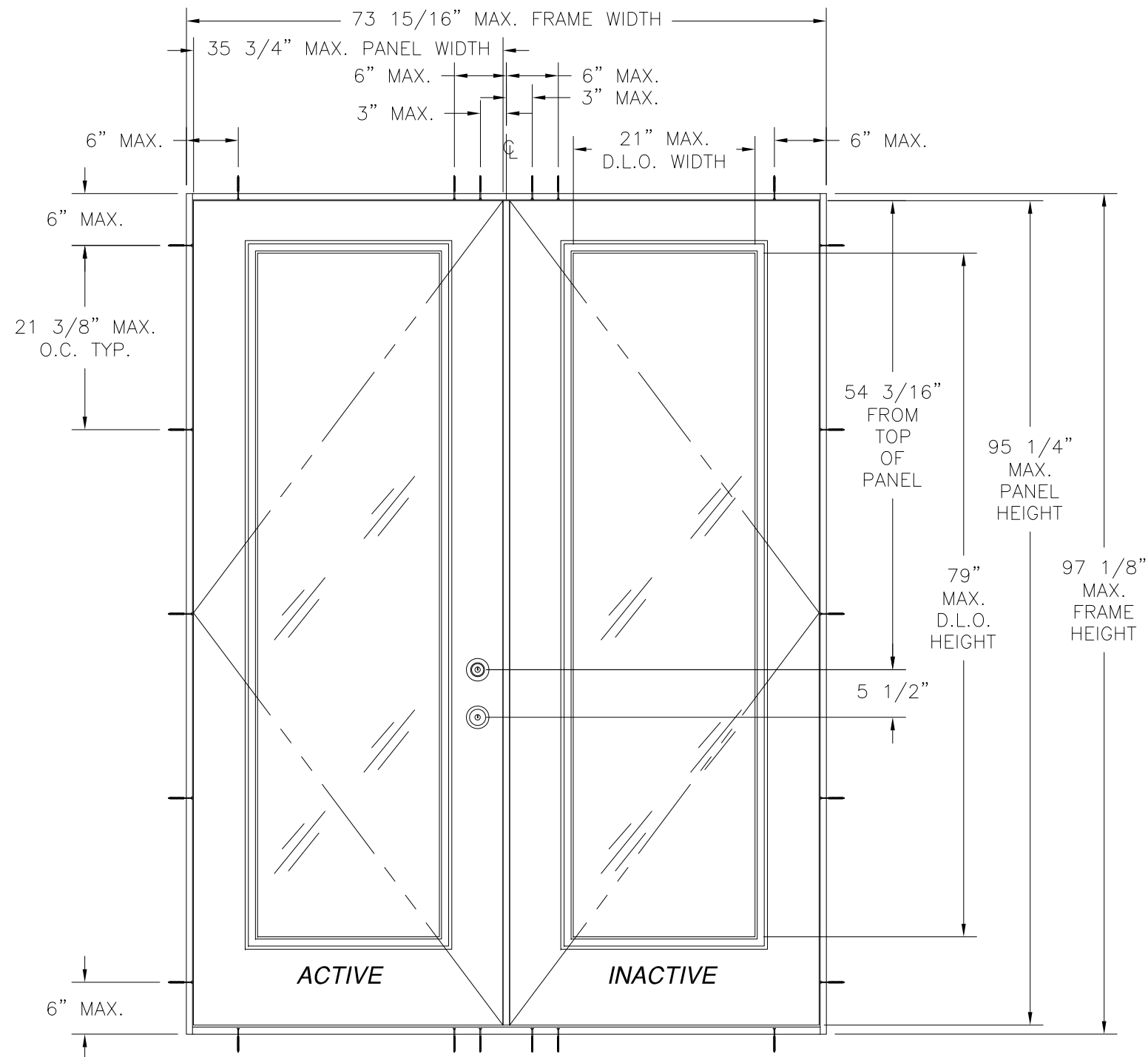
MIDDLE AND BOTTOM HINGE DETAIL
2X BUCK/WOOD FRAMING INSTALLATION
6'8 AND 8'0 UNITS

WINCORE WINDOW COMPANY, LLC
250 STAUNTON AVE.
PARKERSBURG, WV 26102

PLASTPRO INSERT GLAZED FIBERGLASS IS/OS
DOUBLE DOOR - NON-IMPACT
8'0 IS ELEVATION, ANCHORING LAYOUT AND HINGES

DRAWN: TJH	DWG NO. 08-01101	REV A
SCALE NTS	DATE 09/01/10	SHEET 3 OF 9



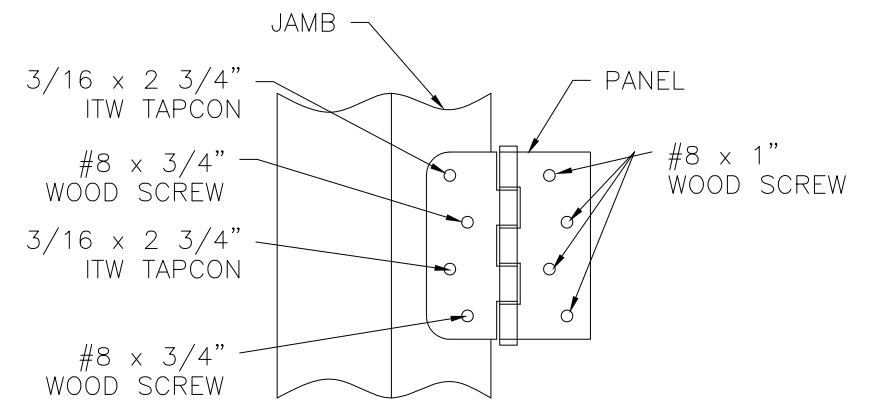


PLASTPRO INSERT GLAZED FIBERGLASS 8'0 OS DOUBLE DOOR
EXTERIOR VIEW

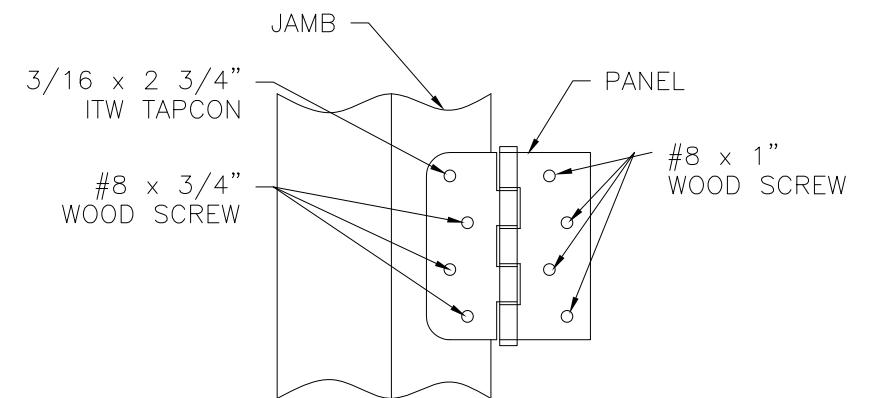
WITH ULTIMATE HURRICANE ASTRAGAL

DESIGN PRESSURE RATING	IMPACT RATING
±40.0 PSF	NONE

REVISIONS			
REV	DESCRIPTION	DATE	APPROVED
A	ADDED FRAME MATERIAL	2/28/11	R.L.



TOP HINGE DETAIL
MASONRY/CONCRETE INSTALLATION
6'8 AND 8'0 UNITS



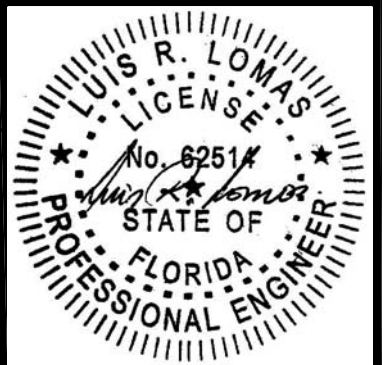
MIDDLE AND BOTTOM HINGE DETAIL
MASONRY/CONCRETE INSTALLATION
6'8 AND 8'0 UNITS

WINCORE WINDOW COMPANY, LLC
250 STAUNTON AVE.
PARKERSBURG, WV 26102

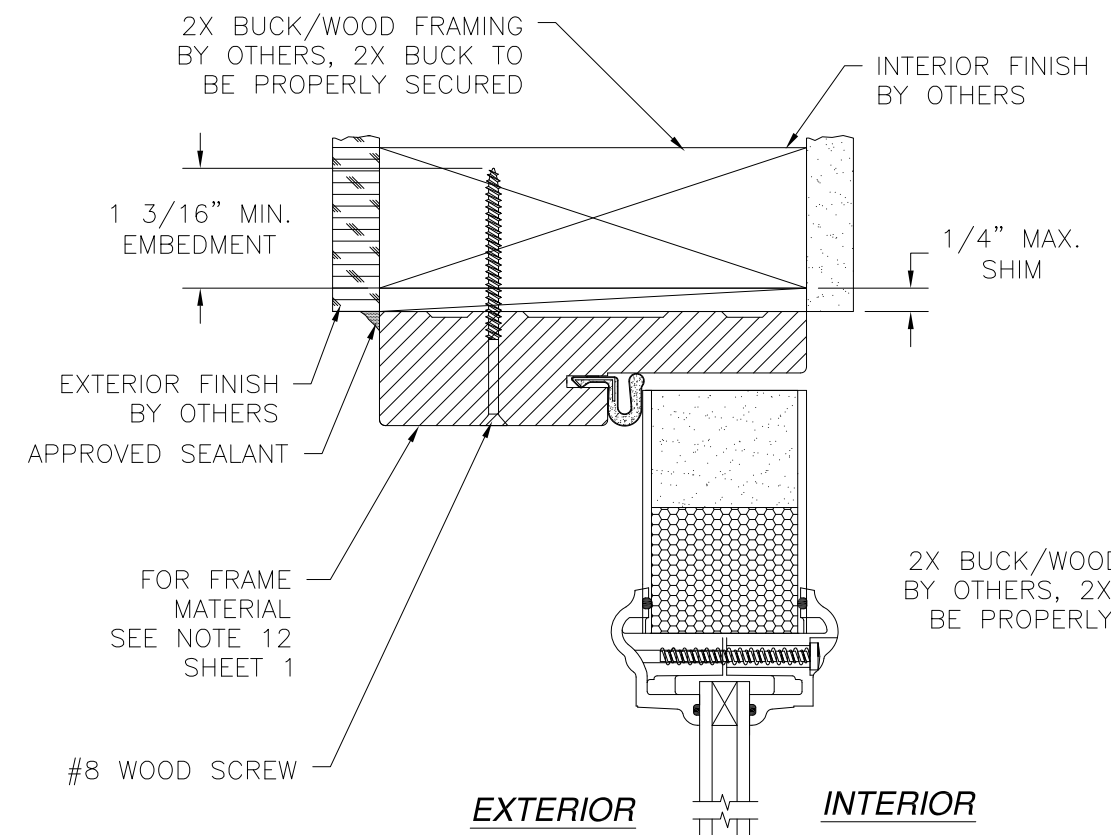
PLASTPRO INSERT GLAZED FIBERGLASS IS/OS
DOUBLE DOOR – NON-IMPACT
8'0 OS ELEVATION, ANCHORING LAYOUT AND HINGES

DRAWN: TJH DWG NO. 08-01101 REV A

SCALE NTS DATE 09/01/10 SHEET 4 OF 9

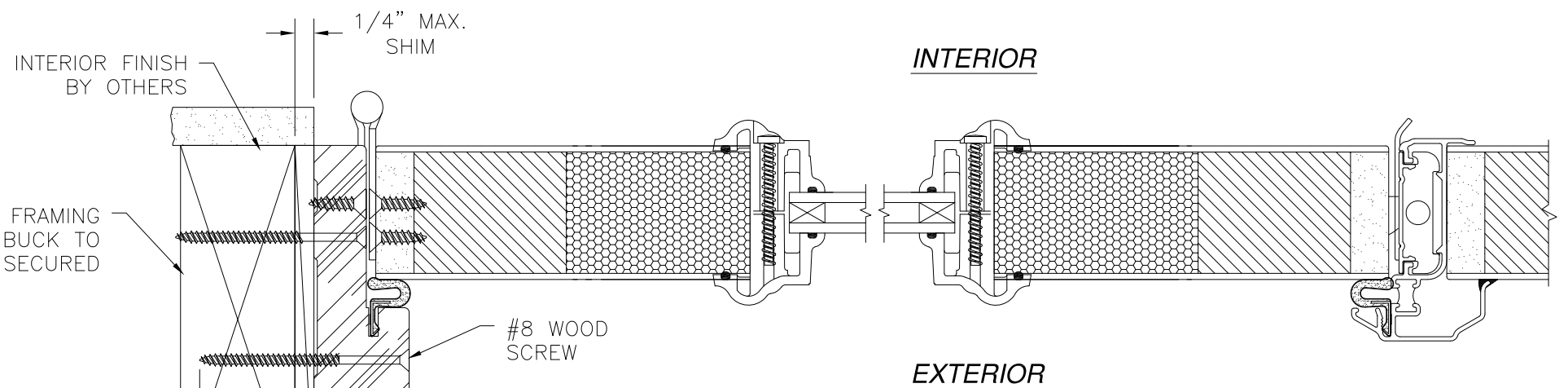


REVISIONS			
REV	DESCRIPTION	DATE	APPROVED
A	ADDED FRAME MATERIAL	2/28/11	R.L.



EXTERIOR **INTERIOR**

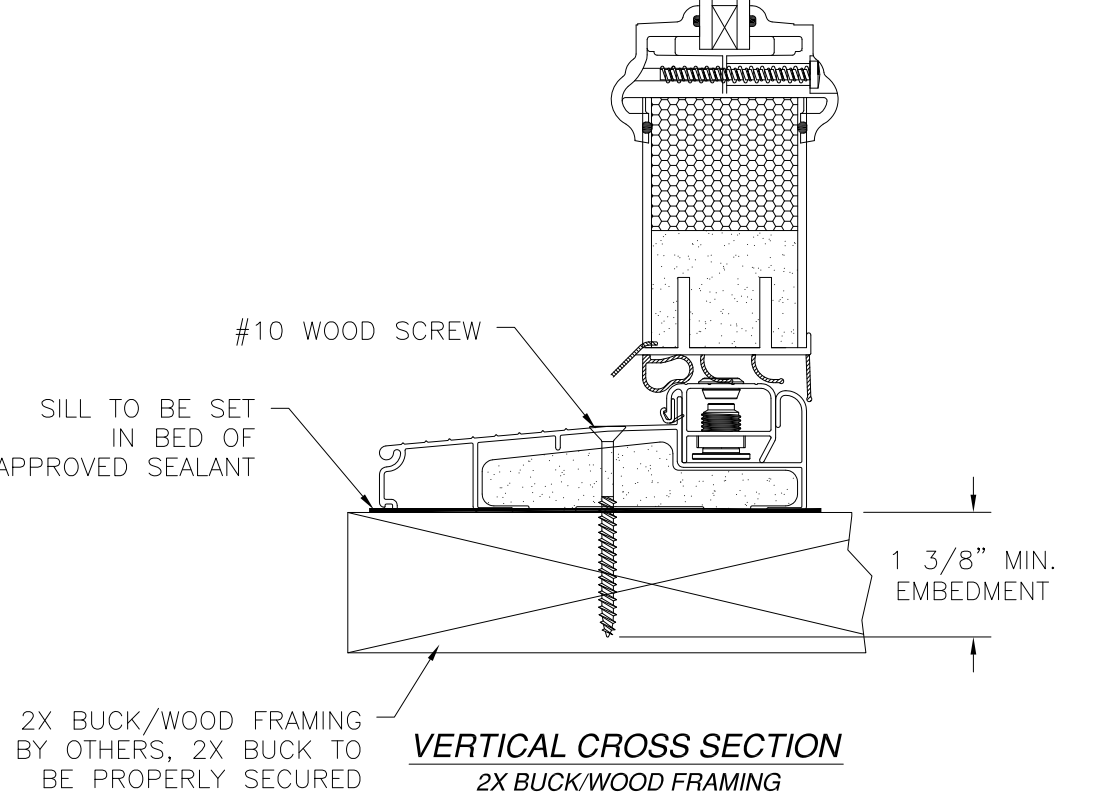
VERTICAL CROSS SECTION
2X BUCK/WOOD FRAMING



INTERIOR

EXTERIOR

HORIZONTAL CROSS SECTION
2X BUCK/WOOD FRAMING

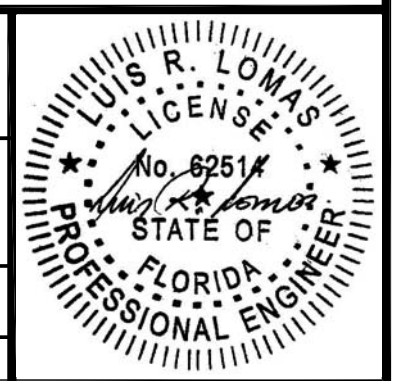


2X BUCK/WOOD FRAMING BY OTHERS, 2X BUCK TO BE PROPERLY SECURED

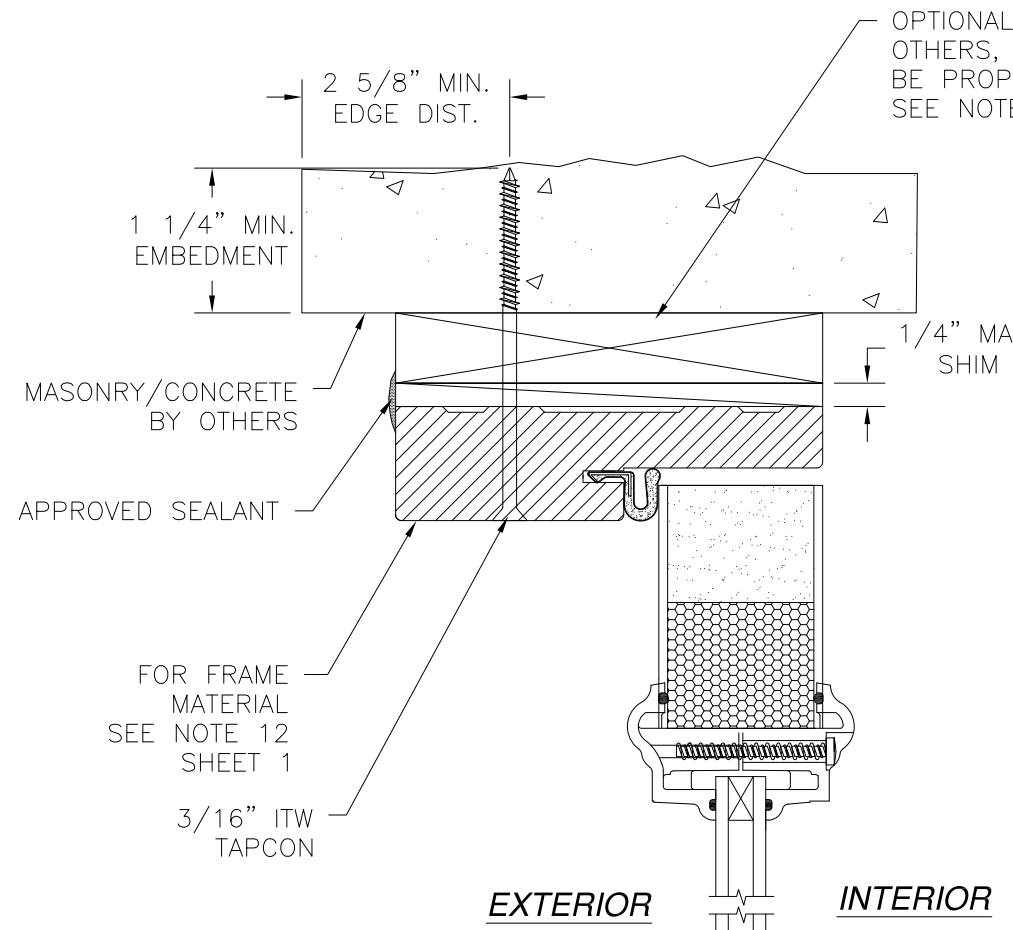
WINCORE WINDOW COMPANY, LLC
250 STAUNTON AVE.
PARKERSBURG, WV 26102

PLASTPRO INSERT GLAZED FIBERGLASS IS/OS
DOUBLE DOOR - NON-IMPACT
INSWING INSTALLATION DETAILS

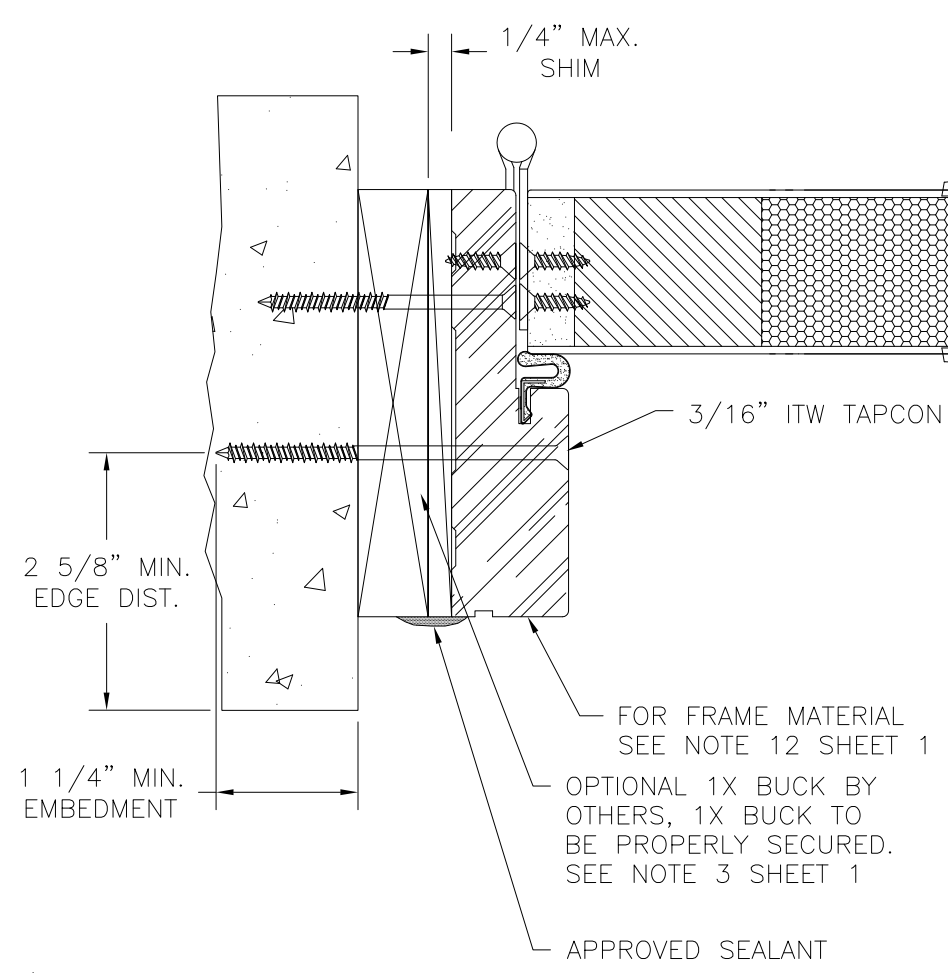
DRAWN: TJH	DWG NO. 08-01101	REV A
SCALE NTS	DATE 09/01/10	SHEET 5 OF 9



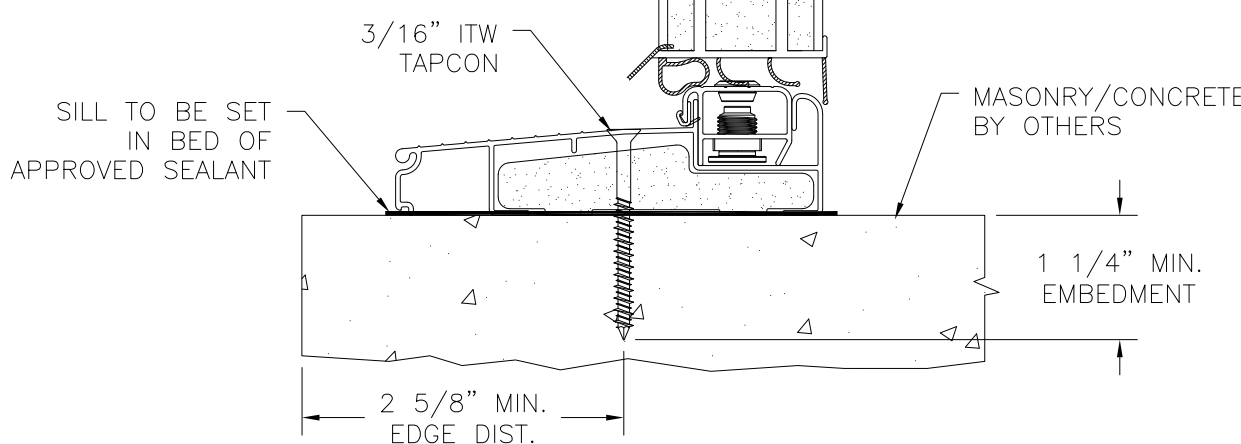
REVISIONS			
REV	DESCRIPTION	DATE	APPROVED
A	ADDED FRAME MATERIAL	2/28/11	R.L.



OPTIONAL 1X BUCK BY OTHERS, 1X BUCK TO BE PROPERLY SECURED. SEE NOTE 3 SHEET 1



HORIZONTAL CROSS SECTION
MASONRY/CONCRETE INSTALLATION

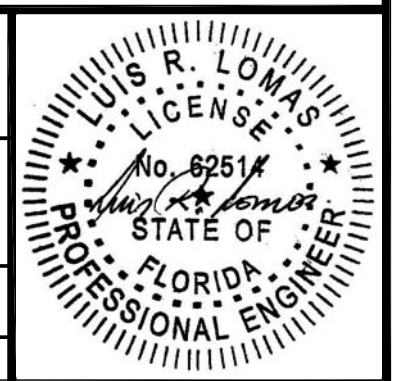


VERTICAL CROSS SECTION
MASONRY/CONCRETE INSTALLATION

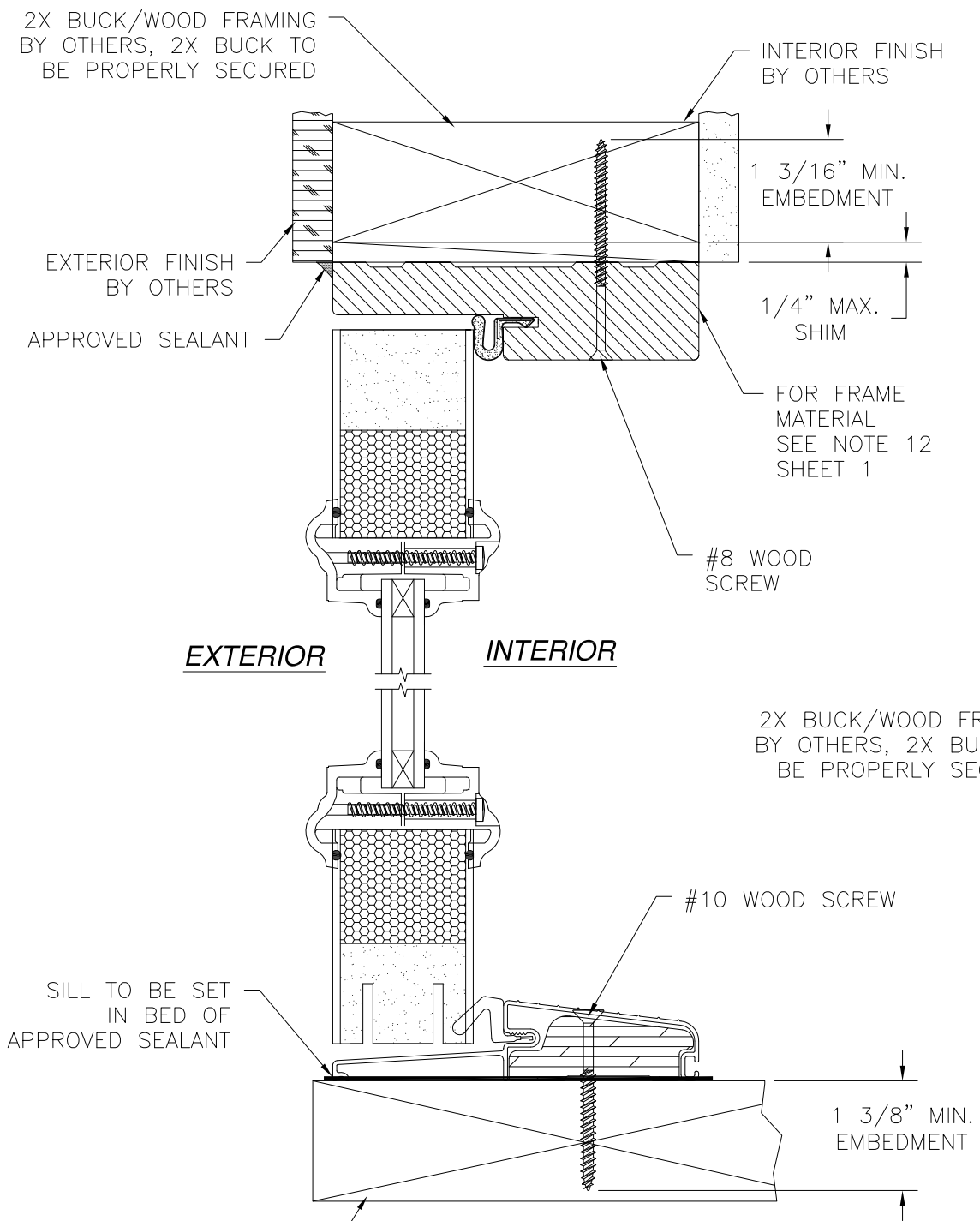
WINCORE WINDOW COMPANY, LLC
250 STAUNTON AVE.
PARKERSBURG, WV 26102

PLASTPRO INSERT GLAZED FIBERGLASS IS/OS
DOUBLE DOOR - NON-IMPACT
INSWING INSTALLATION DETAILS

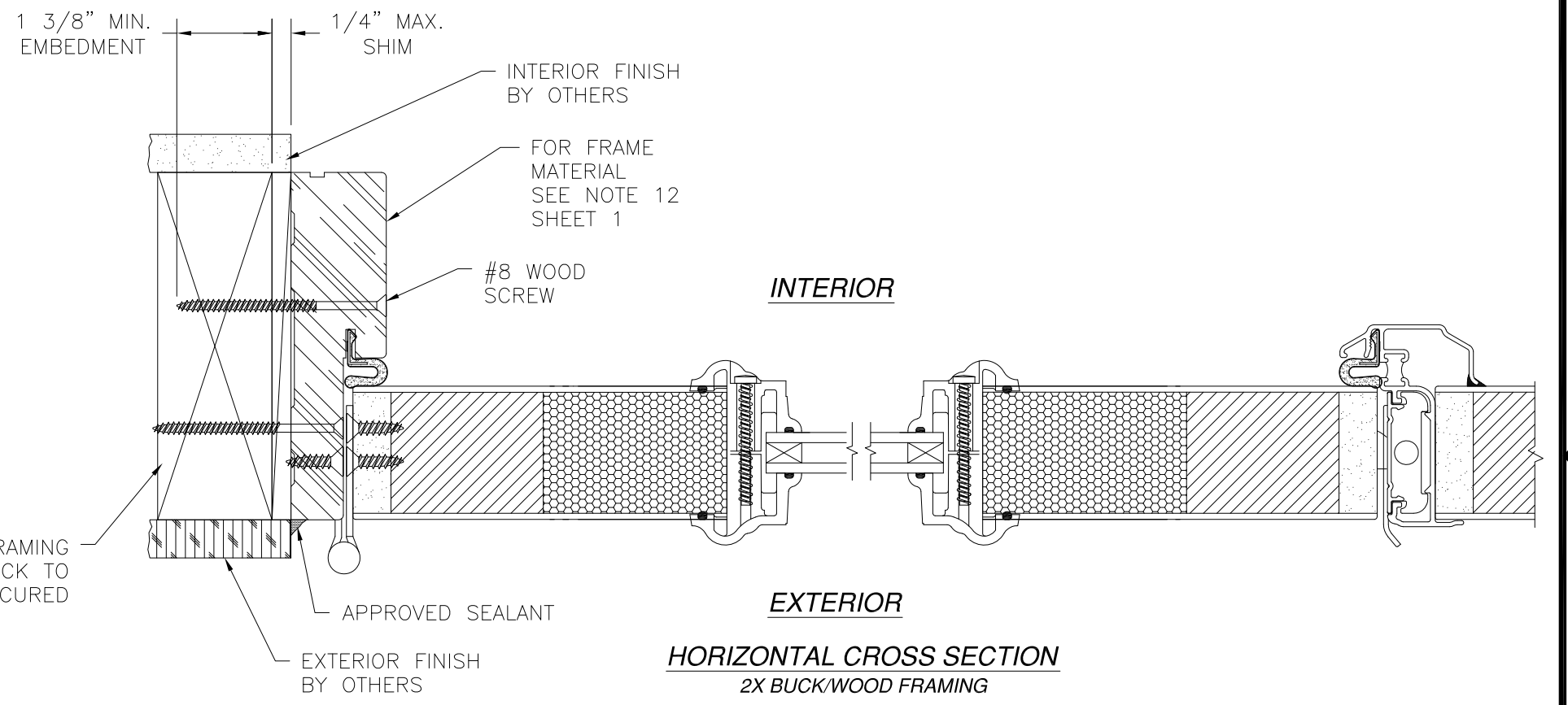
DRAWN: TJH	DWG NO. 08-01101	REV A
SCALE NTS	DATE 09/01/10	SHEET 6 OF 9



REVISIONS			
REV	DESCRIPTION	DATE	APPROVED
A	ADDED FRAME MATERIAL	2/28/11	R.L.



VERTICAL CROSS SECTION
2X BUCK/WOOD FRAMING



HORIZONTAL CROSS SECTION
2X BUCK/WOOD FRAMING

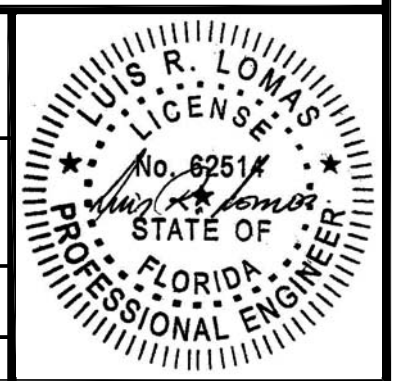
2X BUCK/WOOD FRAMING BY OTHERS, 2X BUCK TO BE PROPERLY SECURED

SILL TO BE SET IN BED OF APPROVED SEALANT

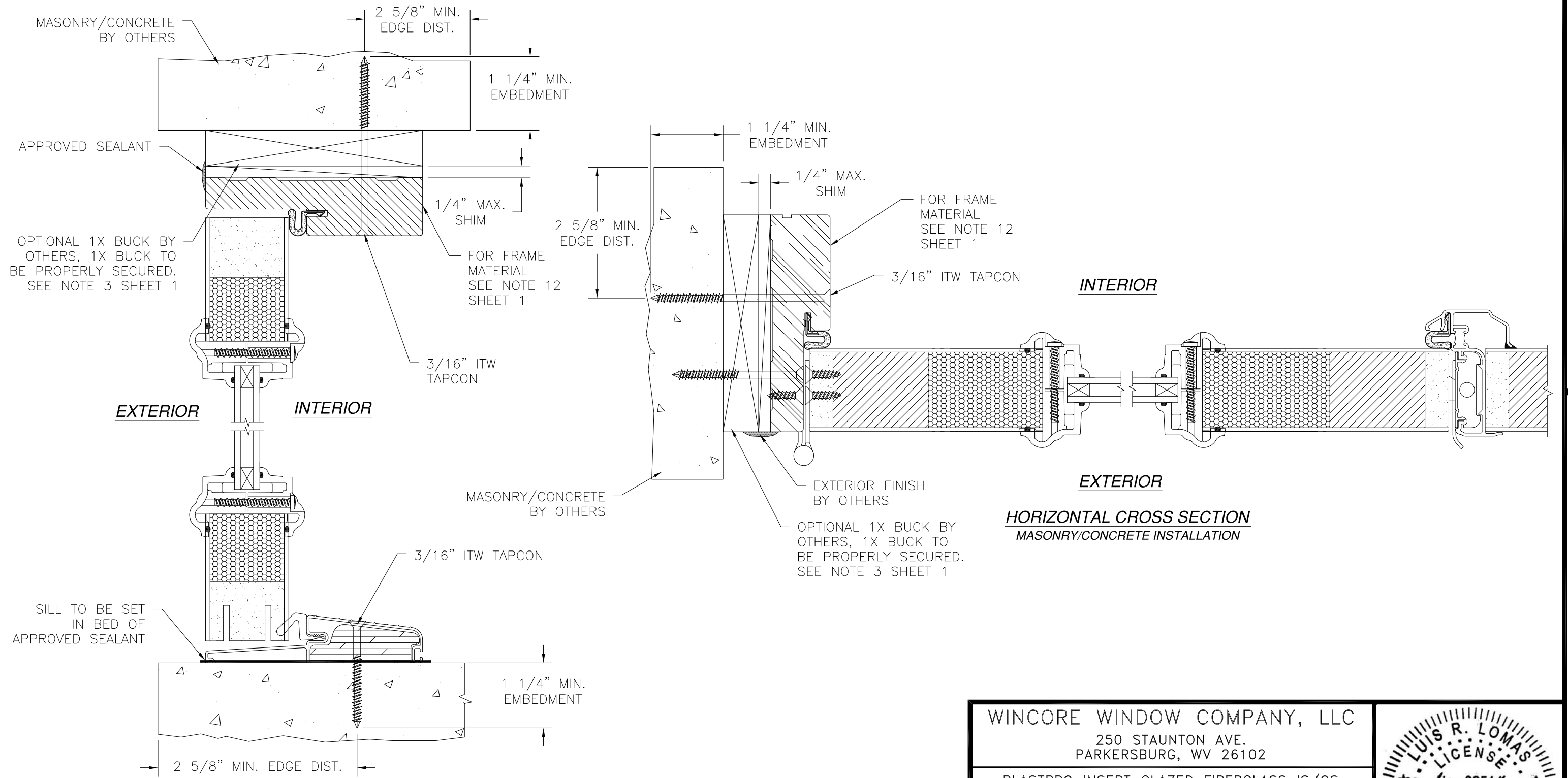
WINCORE WINDOW COMPANY, LLC
250 STAUNTON AVE.
PARKERSBURG, WV 26102

PLASTPRO INSERT GLAZED FIBERGLASS IS/OS
DOUBLE DOOR - NON-IMPACT
OUTSWING INSTALLATION DETAILS

DRAWN: TJH	DWG NO. 08-01101	REV A
SCALE NTS	DATE 09/01/10	SHEET 7 OF 9



REVISIONS			
REV	DESCRIPTION	DATE	APPROVED
A	ADDED FRAME MATERIAL	2/28/11	R.L.



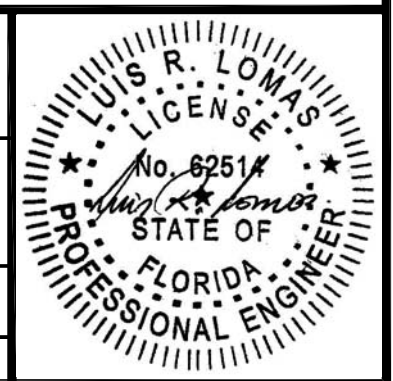
VERTICAL CROSS SECTION
2X BUCK/WOOD FRAMING

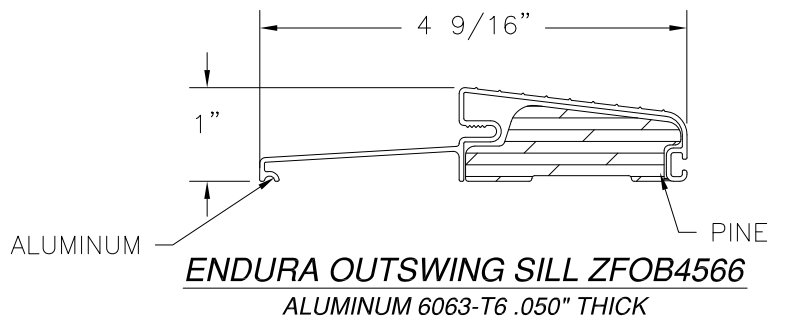
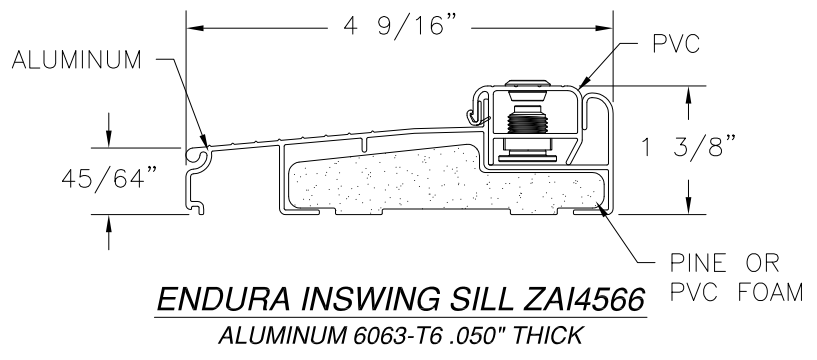
HORIZONTAL CROSS SECTION
MASONRY/CONCRETE INSTALLATION

WINCORE WINDOW COMPANY, LLC
250 STAUNTON AVE.
PARKERSBURG, WV 26102

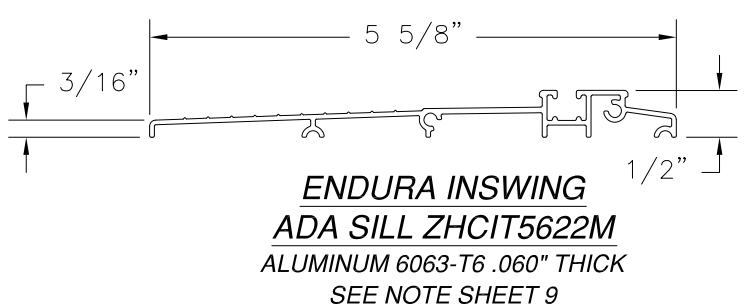
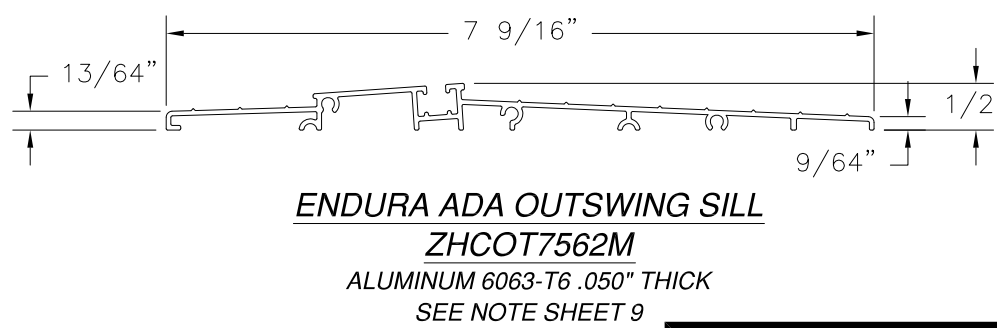
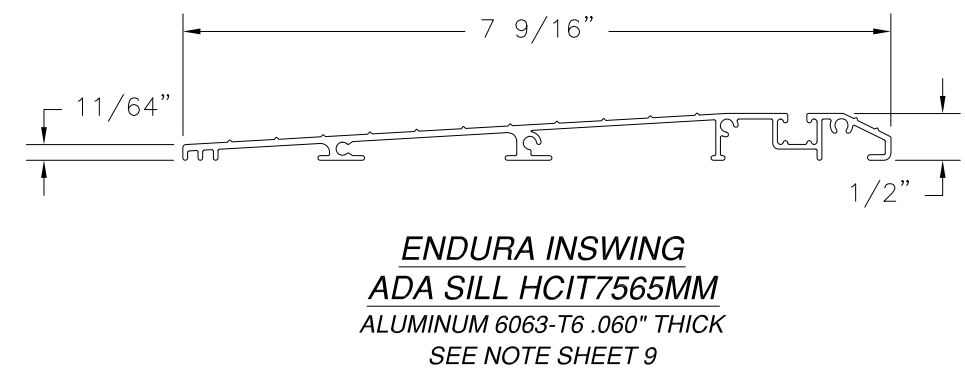
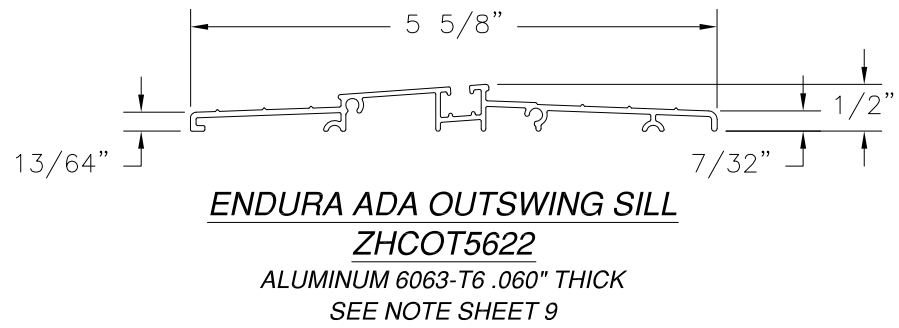
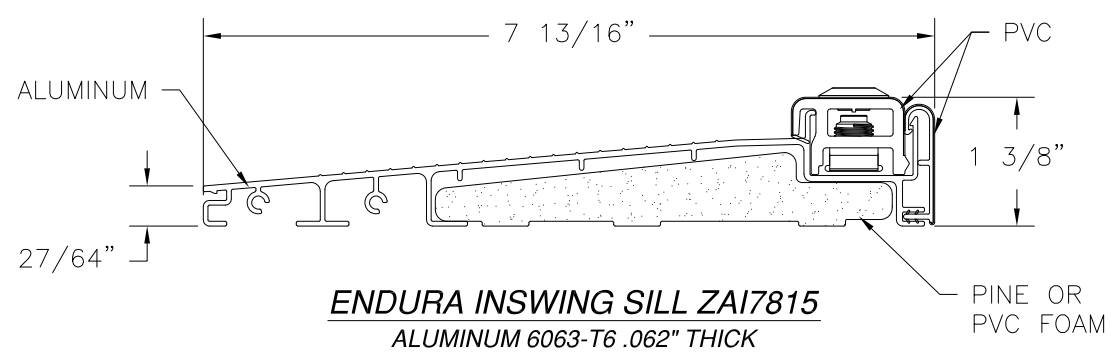
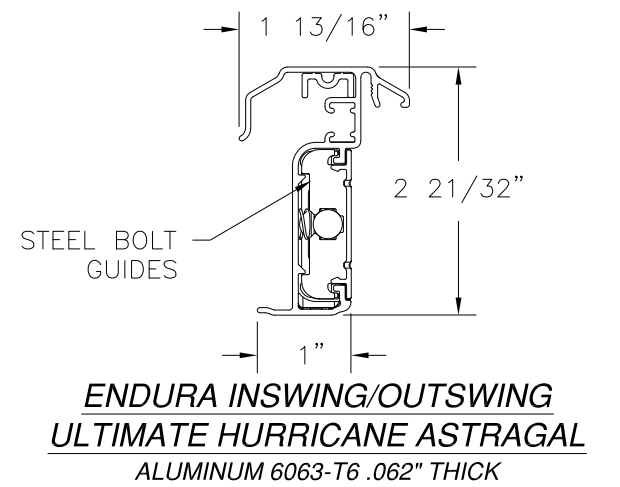
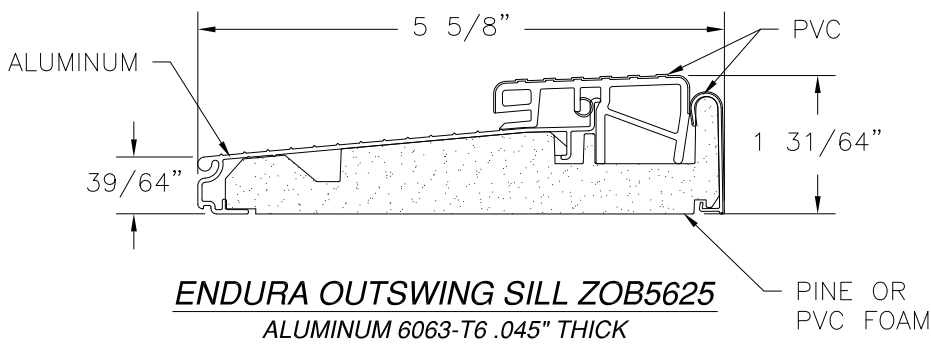
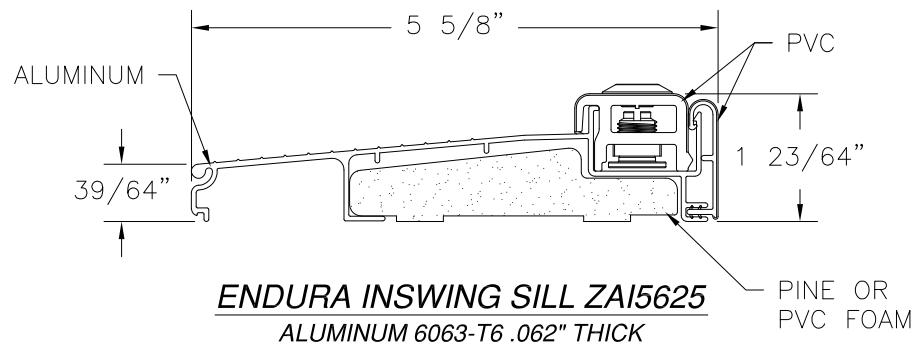
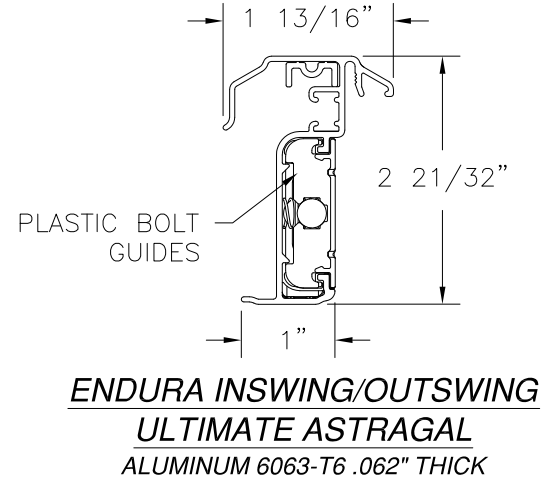
PLASTPRO INSERT GLAZED FIBERGLASS IS/OS
DOUBLE DOOR - NON-IMPACT
OUTSWING INSTALLATION DETAILS

DRAWN: TJH	DWG NO. 08-01101	REV A
SCALE NTS	DATE 09/01/10	SHEET 8 OF 9





REVISIONS			
REV	DESCRIPTION	DATE	APPROVED
A	ADDED FRAME MATERIAL	2/28/11	R.L.



NOTE: ADA SILLS HAVE NOT BEEN TESTED FOR WATER RESISTANCE AND MUST ONLY BE INSTALLED IN AREAS WHERE WATER RESISTANCE IS NOT REQUIRED.

WINCORE WINDOW COMPANY, LLC
250 STAUNTON AVE.
PARKERSBURG, WV 26102

PLASTPRO INSERT GLAZED FIBERGLASS IS/OS
DOUBLE DOOR - NON-IMPACT
APPROVED SILLS AND ASTRAGAL DETAILS

DRAWN: TJH	DWG NO. 08-01101	REV A
SCALE NTS	DATE 09/01/10	SHEET 9 OF 9

