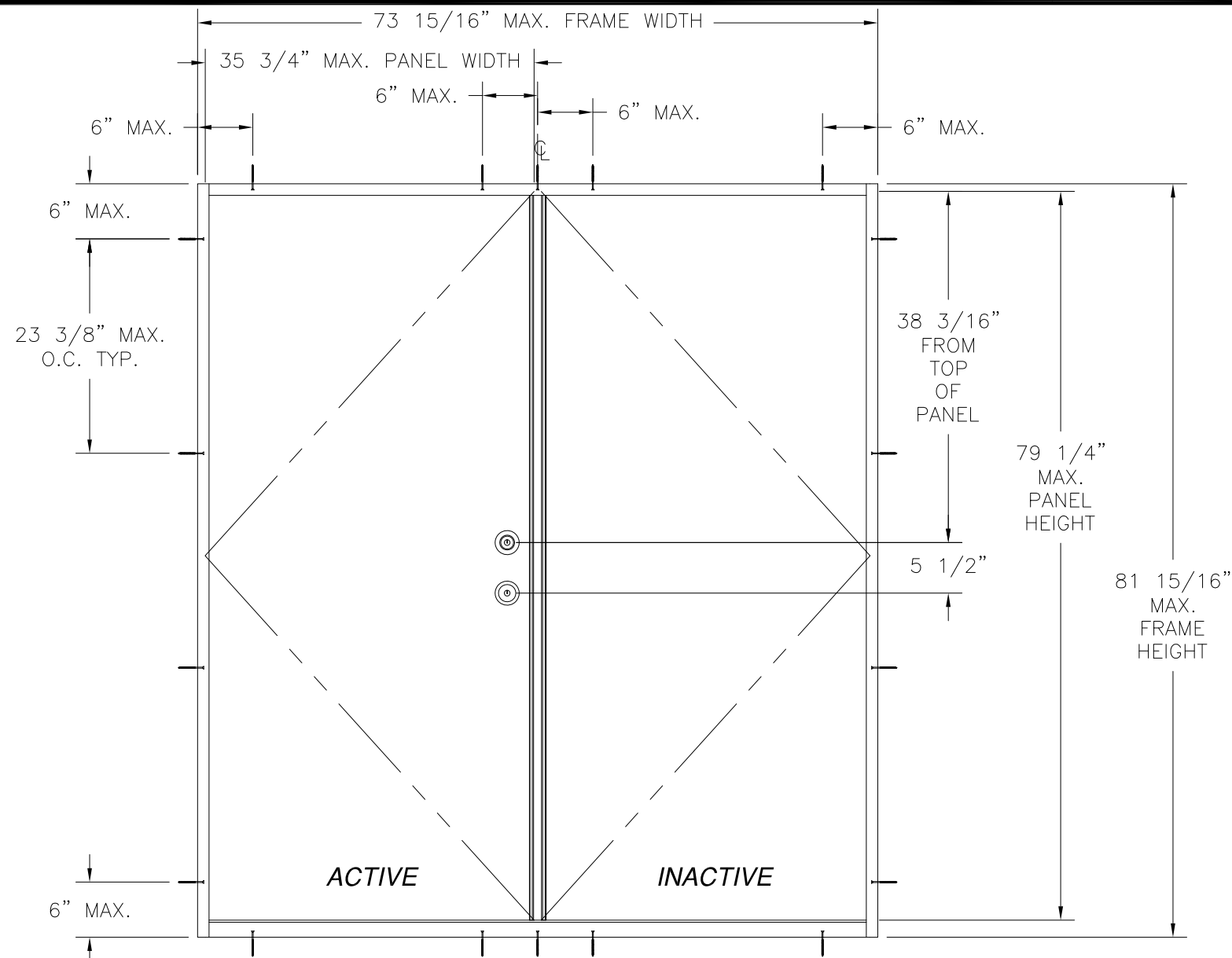


REVISIONS			
REV	DESCRIPTION	DATE	APPROVED
A	ADDED FRAME MATERIAL	2/28/11	R.L.



NOTES:

- 1) THE PRODUCT SHOWN HEREIN IS DESIGNED AND MANUFACTURED TO COMPLY WITH REQUIREMENTS OF FLORIDA BUILDING CODE.
- 2) WOOD FRAMING AND MASONRY OPENING TO BE DESIGNED AND ANCHORED TO PROPERLY TRANSFER ALL LOADS TO STRUCTURE. WOOD FRAMING AND MASONRY OPENING IS THE RESPONSIBILITY OF THE ARCHITECT OR ENGINEER OF RECORD.
- 3) 1X BUCK OVER MASONRY/CONCRETE IS OPTIONAL. WHERE 1X BUCK IS NOT USED DISSIMILAR MATERIALS MUST BE SEPARATED WITH APPROVED COATING OR MEMBRANE. SELECTION OF COATING OR MEMBRANE IS THE RESPONSIBILITY OF THE ARCHITECT OR ENGINEER OF RECORD.
- 4) APPROVED IMPACT PROTECTIVE SYSTEM IS REQUIRED FOR THIS PRODUCT IN WIND BORNE DEBRIS REGIONS.
- 5) ALLOWABLE STRESS INCREASE OF 1/3 WAS NOT USED IN THE DESIGN OF THE PRODUCT SHOWN HEREIN. WIND LOAD DURATION FACTOR Cd=1.6 WAS USED FOR WOOD ANCHOR CALCULATIONS.
- 6) SHIM AS REQUIRED AT EACH INSTALLATION ANCHOR WITH LOAD BEARING SHIM. SHIM WHERE SPACE OF 1/16" OR GREATER OCCURS. MAXIMUM ALLOWABLE SHIM STACK TO BE 1/4".
- 7) FOR ANCHORING INTO 2X BUCK OR WOOD FRAMING AT HEAD AND JAMBS USE #8 WOOD SCREW OF SUFFICIENT LENGTH TO ACHIEVE A 1 3/16" MINIMUM EMBEDMENT INTO SUBSTRATE. AT SILL USE #10 WOOD SCREW OF SUFFICIENT LENGTH TO ACHIEVE A 1 3/8" MINIMUM EMBEDMENT INTO SUBSTRATE LOCATE ANCHORS AS SHOWN IN ANCHORING LAYOUT AND INSTALLATION DETAILS.
- 8) FOR ANCHORING INTO MASONRY/CONCRETE USE 3/16" ITW TAPCON OF SUFFICIENT LENGTH TO ACHIEVE A 1 1/4" MINIMUM EMBEDMENT INTO SUBSTRATE WITH 2 5/8" MINIMUM EDGE DISTANCE. LOCATE ANCHORS AS SHOWN IN ANCHORING LAYOUT AND INSTALLATION DETAILS.
- 9) ALL FASTENERS TO BE CORROSION RESISTANT.
- 10) INSTALLATION ANCHOR CAPACITIES FOR PRODUCTS HEREIN ARE BASED ON SUBSTRATE MATERIAL WITH THE FOLLOWING PROPERTIES:  
 A. WOOD - G=0.42 MINIMUM SPECIFIC GRAVITY  
 B. CONCRETE - 2,000PSI MINIMUM COMPRESSIVE STRENGTH.  
 C. MASONRY - STRENGTH CONFORMANCE TO ASTM C-90, GRADE N, TYPE 1 (OR GREATER).
- 11) FRAME MATERIAL: WOOD WITH G .5 MINIMUM SPECIFIC GRAVITY OR COMPOSITE FRAME (PLAST PRO POLY FIBER).
- 12) DOOR PANEL MATERIAL: .075" THICK FIBERGLASS WITH PVC TOP AND BOTTOM RAILS AND LAMINATED WOOD STILES.

**PLASTPRO OPAQUE FIBERGLASS 6'8 IS DOUBLE DOOR**

**WITH ULTIMATE ASTRAGAL**

WHERE WATER IS NOT REQUIRED

DESIGN PRESSURE RATING	IMPACT RATING
±25.0 PSF	NONE

WHERE WATER IS REQUIRED

DESIGN PRESSURE RATING	IMPACT RATING
+20.0 PSF -25.0 PSF	NONE

**WITH ULTIMATE HURRICANE ASTRAGAL**

WHERE WATER IS NOT REQUIRED

DESIGN PRESSURE RATING	IMPACT RATING
±35.0 PSF	NONE

WHERE WATER IS REQUIRED

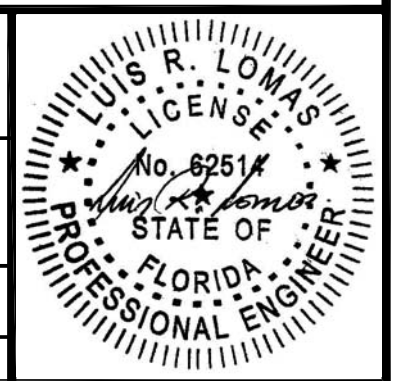
DESIGN PRESSURE RATING	IMPACT RATING
+20.0 PSF -35.0 PSF	NONE

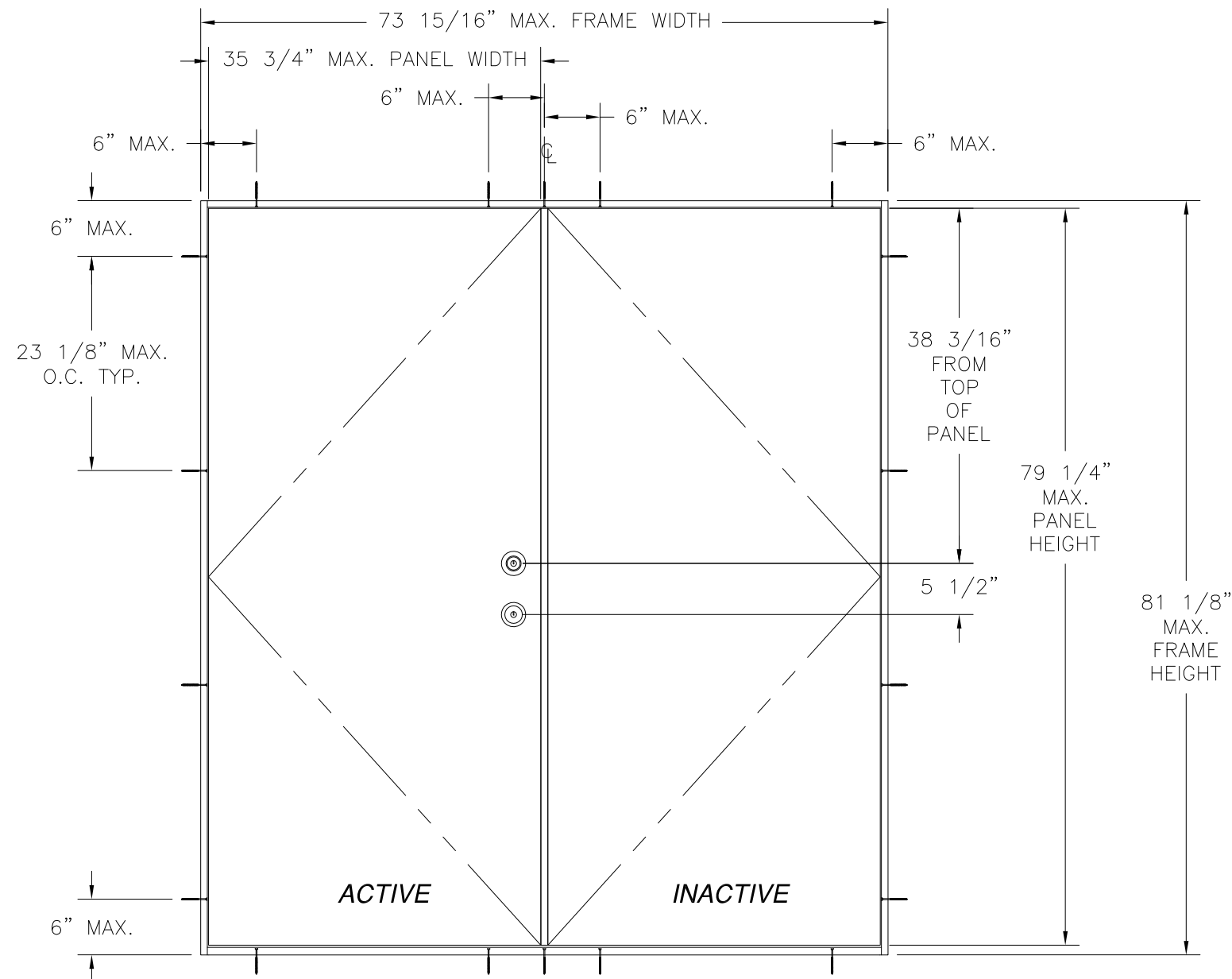
TABLE OF CONTENTS	
SHEET NO.	DESCRIPTION
1 - 4	ELEVATIONS, ANCHORING LAYOUTS AND NOTES
5 - 8	INSTALLATION DETAILS
9	APPROVED SILLS AND ASTRAGAL DETAILS

**WINCORE WINDOW COMPANY, LLC**  
 250 STAUNTON AVE.  
 PARKERSBURG, WV 26102

PLASTPRO OPAQUE FIBERGLASS IS/OS  
 DOUBLE DOOR - NON-IMPACT  
 6'8 IS ELEVATION, ANCHORING LAYOUT AND NOTES

DRAWN: TJH	DWG NO. 08-01103	REV A
SCALE NTS	DATE 09/02/10	SHEET 1 OF 9





**PLASTPRO OPAQUE FIBERGLASS 6'8 OS DOUBLE DOOR**  
EXTERIOR VIEW

WITH ULTIMATE ASTRAGAL

DESIGN PRESSURE RATING	IMPACT RATING
±25.0 PSF	NONE

WITH ULTIMATE HURRICANE ASTRAGAL

WHERE WATER IS NOT REQUIRED

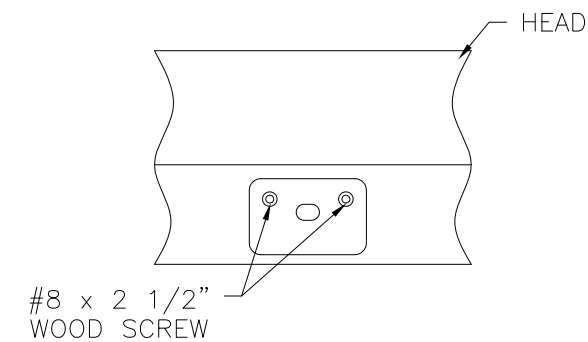
DESIGN PRESSURE RATING	IMPACT RATING
+45.0 PSF -40.0 PSF	NONE

WHERE WATER IS REQUIRED

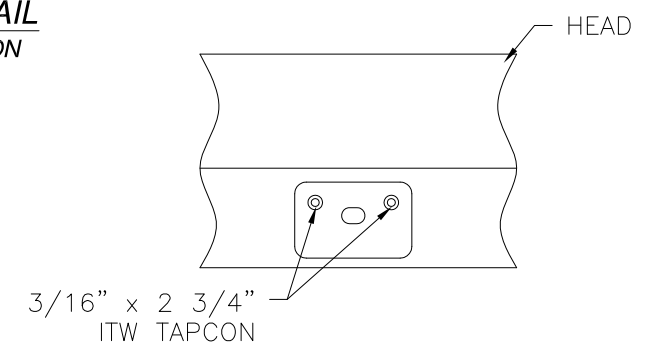
DESIGN PRESSURE RATING	IMPACT RATING
±40.0 PSF	NONE

REVISIONS			
REV	DESCRIPTION	DATE	APPROVED
A	ADDED FRAME MATERIAL	2/28/11	R.L.

HARDWARE SCHEDULE	
A.	KEYED ENTRY LOCK GRADE 2 OR BETTER
B.	DEADBOLT SET GRADE 2 OR BETTER
C.	MULTI-POINT LOCKING HARDWARE BY TRILLENIUM
D.	INSWING ULTIMATE ASTRAGAL BY ENDURA.
E.	INSWING ULTIMATE HURRICANE ASTRAGAL BY ENDURA.
F.	OUTSWING ULTIMATE ASTRAGAL BY ENDURA.
G.	OUTSWING ULTIMATE HURRICANE ASTRAGAL BY ENDURA.
H.	4" x 4" BUTT TYPE HINGE (3 PER 6'8 DOORS).
I.	4" x 4" BUTT TYPE HINGE (4 PER 8'0 DOORS).
J.	INSWING AND OUTSWING SILLS BY ENDURA, SEE SHEET 9



**ASTRAGAL HEAD STRIKE DETAIL**  
2X BUCK/WOOD FRAMING INSTALLATION  
6'8 AND 8'0 UNITS

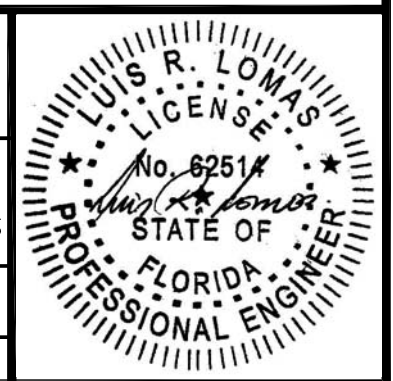


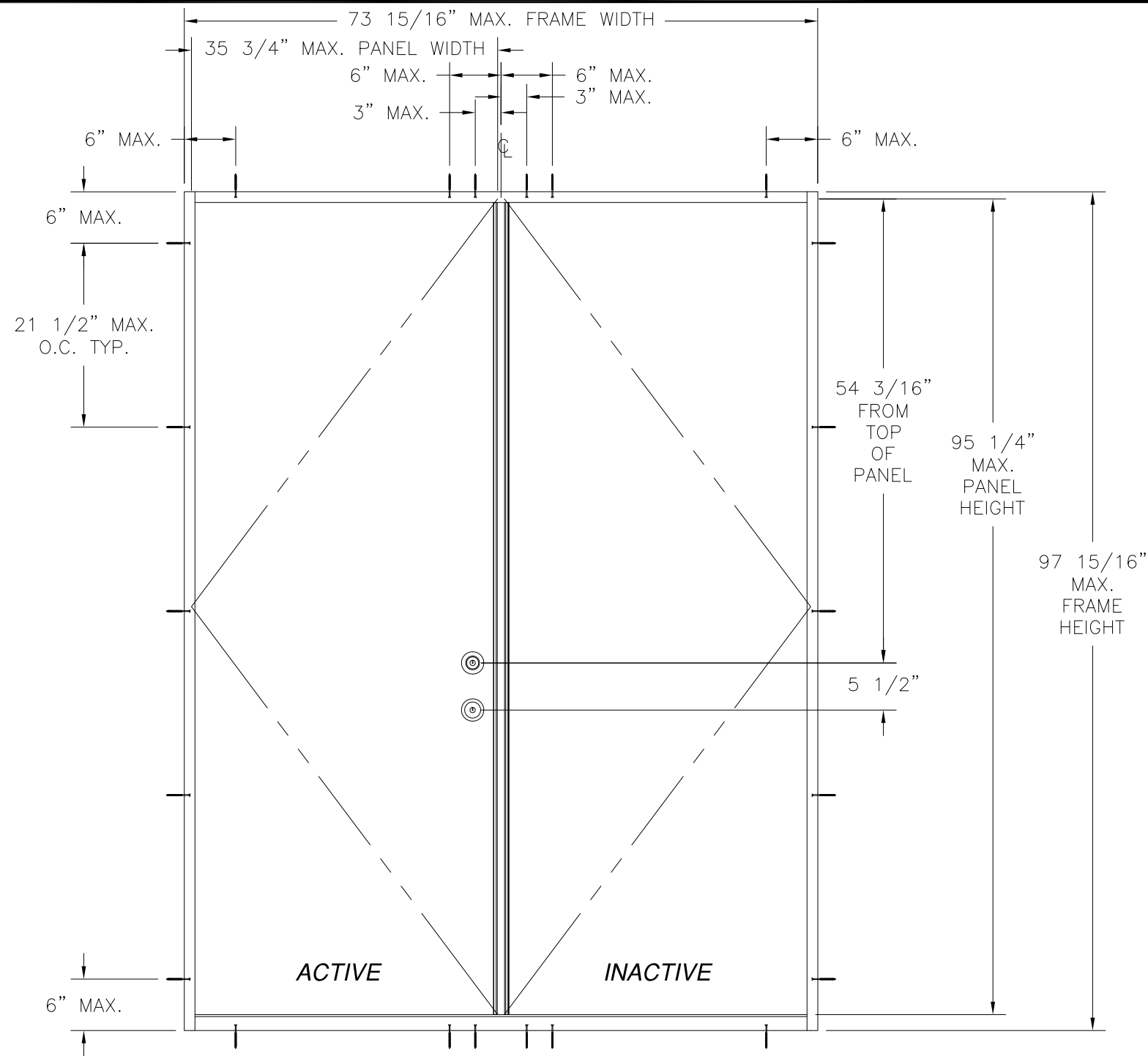
**ASTRAGAL HEAD STRIKE DETAIL**  
MASONRY/CONCRETE INSTALLATION  
6'8 AND 8'0 UNITS

**WINCORE WINDOW COMPANY, LLC**  
250 STAUNTON AVE.  
PARKERSBURG, WV 26102

PLASTPRO OPAQUE FIBERGLASS IS/OS  
DOUBLE DOOR - NON-IMPACT  
6'8 OS ELEVATION, ANCHORING LAYOUT AND STRIKES

DRAWN: TJH	DWG NO. 08-01103	REV A
SCALE NTS	DATE 09/02/10	SHEET 2 OF 9





**PLASTPRO OPAQUE FIBERGLASS 8'0 IS DOUBLE DOOR**  
EXTERIOR VIEW

WITH ULTIMATE HURRICANE ASTRAGAL

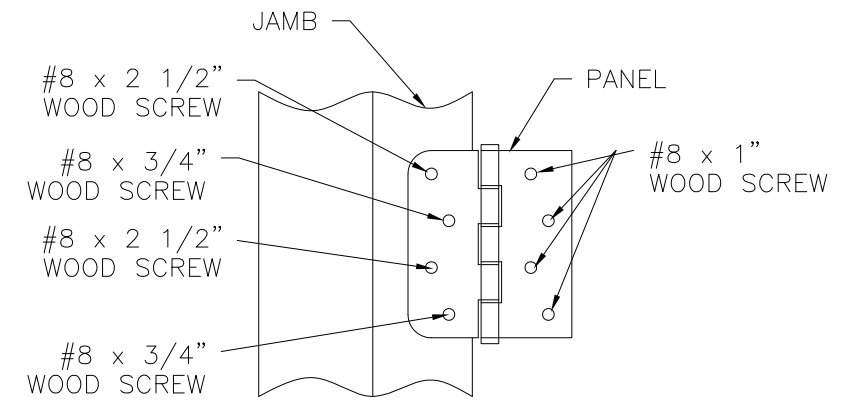
WHERE WATER IS NOT REQUIRED

DESIGN PRESSURE RATING	IMPACT RATING
+45.0 PSF -40.0 PSF	NONE

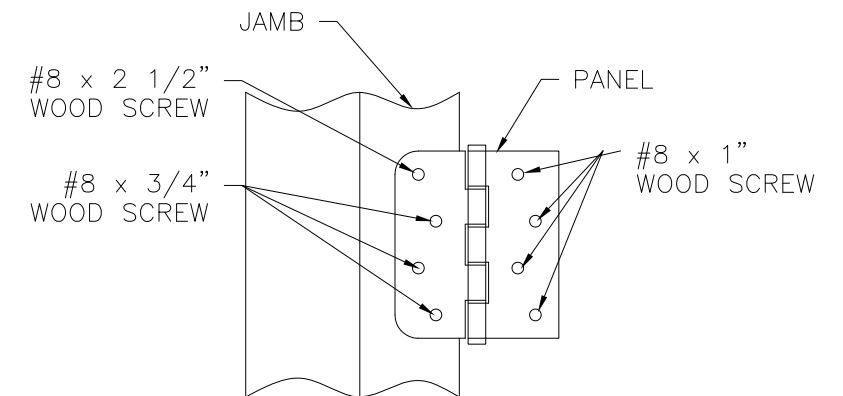
WHERE WATER IS REQUIRED

DESIGN PRESSURE RATING	IMPACT RATING
+20.0 PSF -40.0 PSF	NONE

REVISIONS			
REV	DESCRIPTION	DATE	APPROVED
A	ADDED FRAME MATERIAL	2/28/11	R.L.



**TOP HINGE DETAIL**  
2X BUCK/WOOD FRAMING INSTALLATION  
6'8 AND 8'0 UNITS

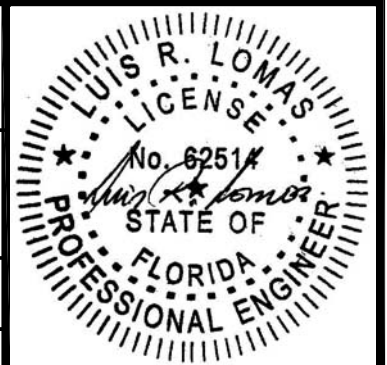


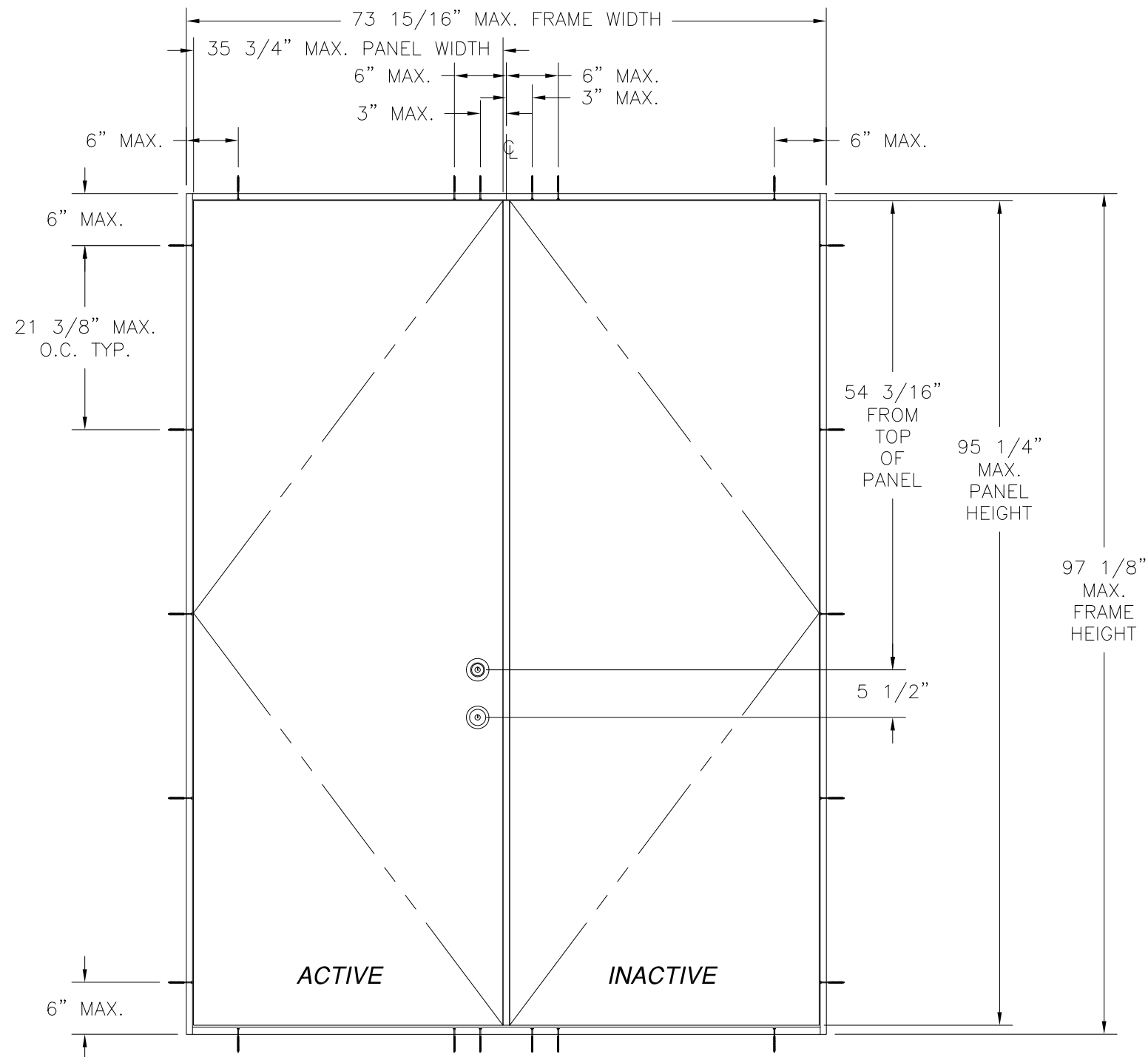
**MIDDLE AND BOTTOM HINGE DETAIL**  
2X BUCK/WOOD FRAMING INSTALLATION  
6'8 AND 8'0 UNITS

WINCORE WINDOW COMPANY, LLC  
250 STAUNTON AVE.  
PARKERSBURG, WV 26102

PLASTPRO OPAQUE FIBERGLASS IS/OS  
DOUBLE DOOR - NON-IMPACT  
8'0 IS ELEVATION, ANCHORING LAYOUT AND HINGES

DRAWN: TJH	DWG NO. 08-01103	REV A
SCALE NTS	DATE 09/02/10	SHEET 3 OF 9



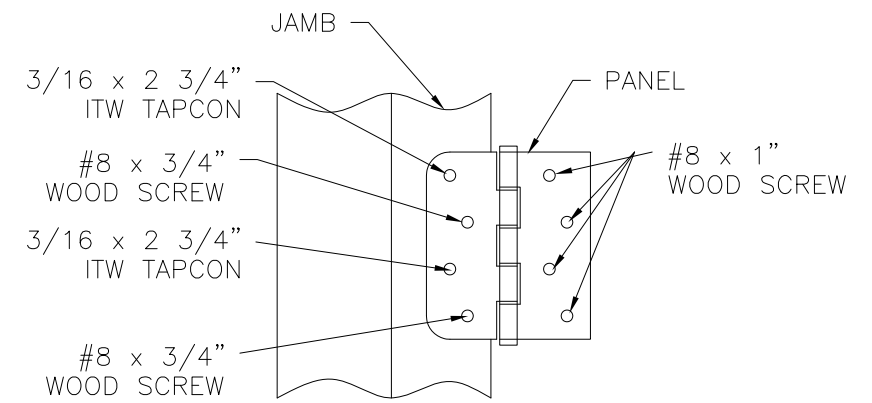


**PLASTPRO OPAQUE FIBERGLASS 8'0 OS DOUBLE DOOR**  
EXTERIOR VIEW

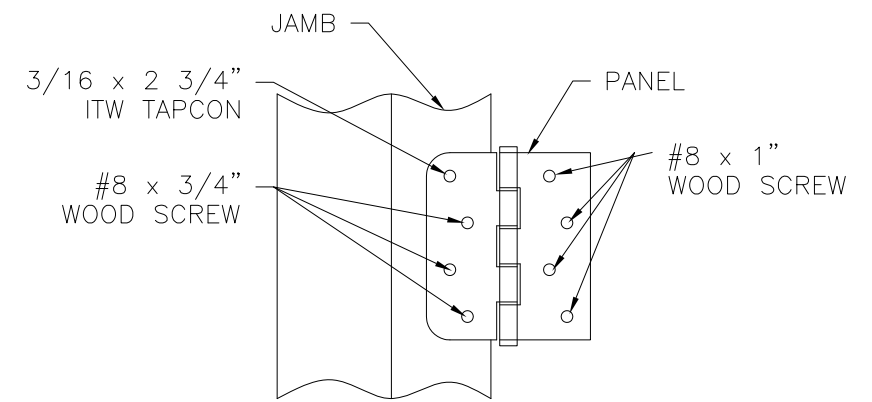
WITH ULTIMATE HURRICANE ASTRAGAL

DESIGN PRESSURE RATING	IMPACT RATING
±40.0 PSF	NONE

REVISIONS			
REV	DESCRIPTION	DATE	APPROVED
A	ADDED FRAME MATERIAL	2/28/11	R.L.



**TOP HINGE DETAIL**  
MASONRY/CONCRETE INSTALLATION  
6'8 AND 8'0 UNITS

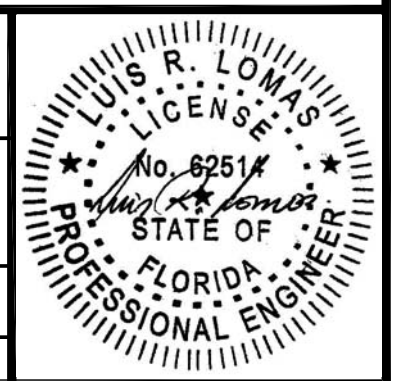


**MIDDLE AND BOTTOM HINGE DETAIL**  
MASONRY/CONCRETE INSTALLATION  
6'8 AND 8'0 UNITS

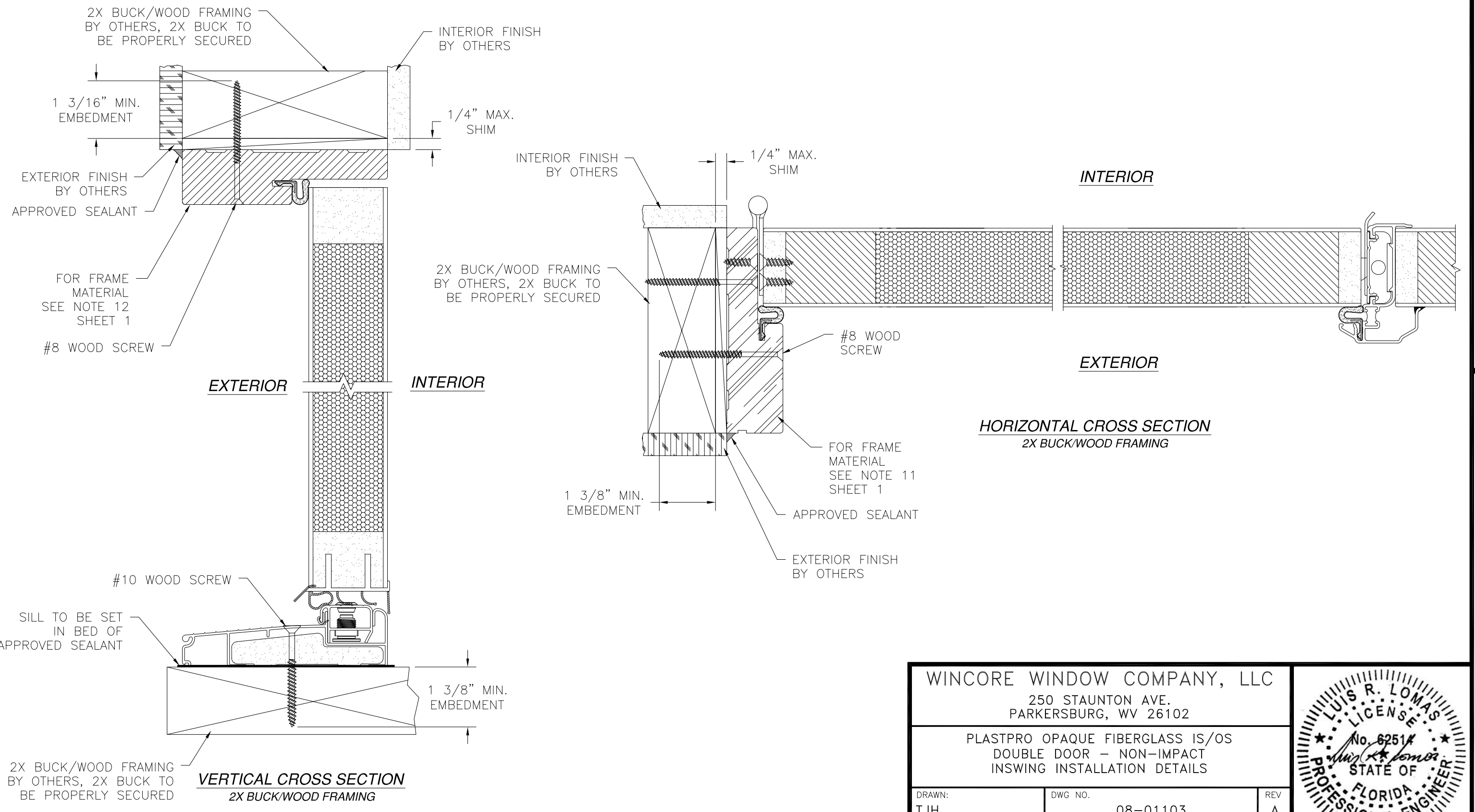
WINCORE WINDOW COMPANY, LLC  
250 STAUNTON AVE.  
PARKERSBURG, WV 26102

PLASTPRO OPAQUE FIBERGLASS IS/OS  
DOUBLE DOOR – NON-IMPACT  
8'0 OS ELEVATION, ANCHORING LAYOUT AND HINGES

DRAWN: TJH	DWG NO. 08-01103	REV A
SCALE NTS	DATE 09/02/10	SHEET 4 OF 9



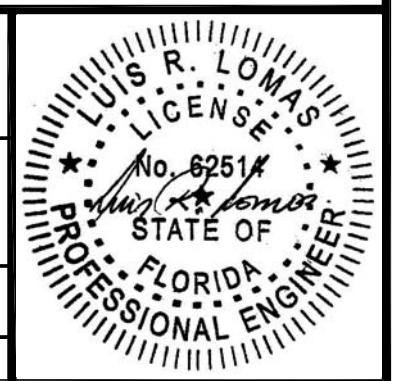
REVISIONS			
REV	DESCRIPTION	DATE	APPROVED
A	ADDED FRAME MATERIAL	2/28/11	R.L.



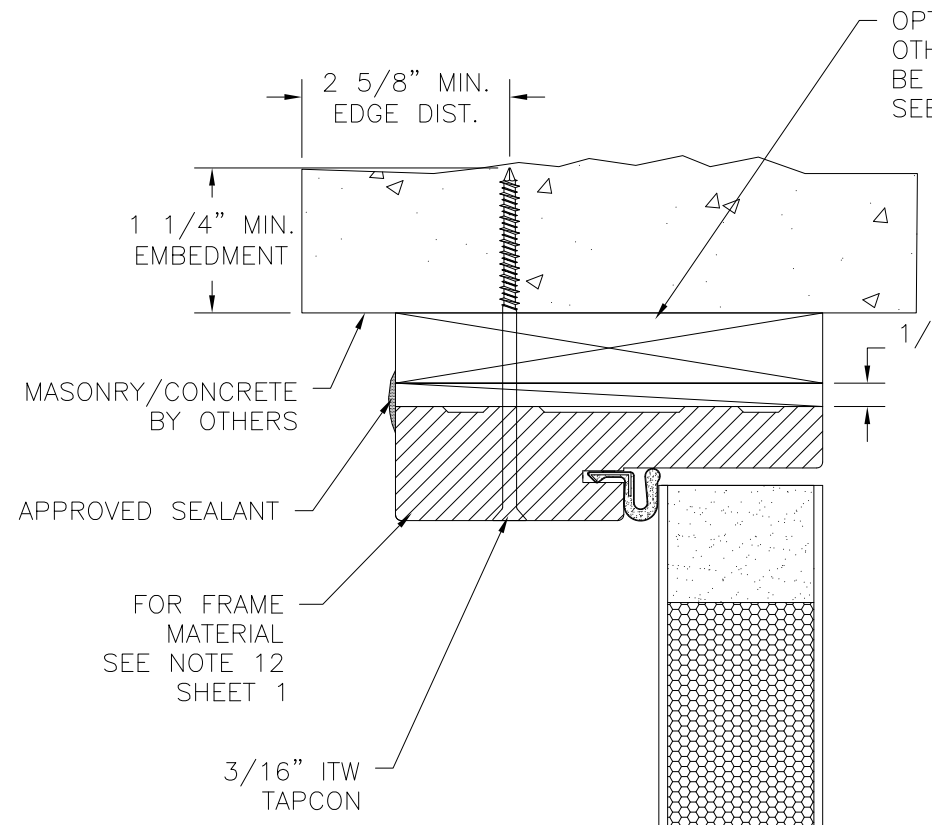
WINCORE WINDOW COMPANY, LLC  
 250 STAUNTON AVE.  
 PARKERSBURG, WV 26102

PLASTPRO OPAQUE FIBERGLASS IS/OS  
 DOUBLE DOOR - NON-IMPACT  
 INSWING INSTALLATION DETAILS

DRAWN: TJH	DWG NO. 08-01103	REV A
SCALE NTS	DATE 09/02/10	SHEET 5 OF 9



REVISIONS			
REV	DESCRIPTION	DATE	APPROVED
A	ADDED FRAME MATERIAL	2/28/11	R.L.

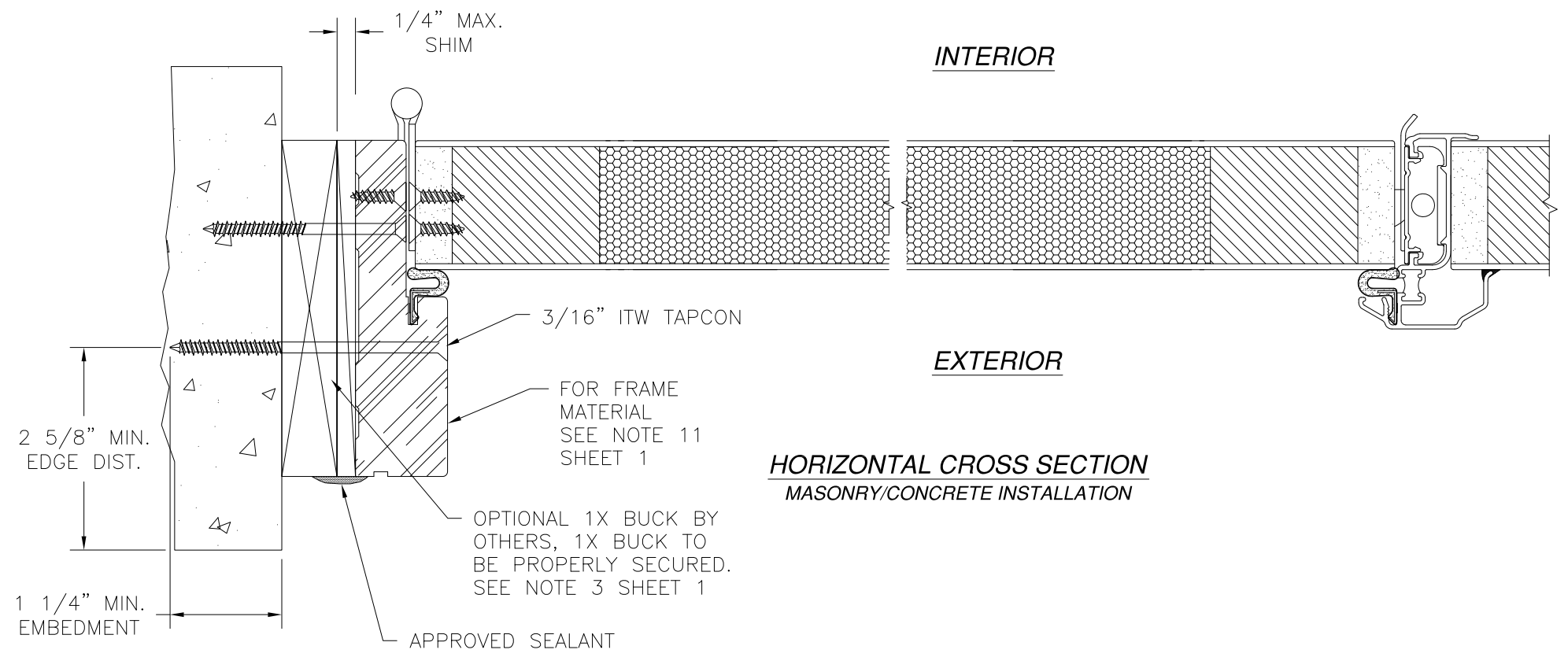


OPTIONAL 1X BUCK BY OTHERS, 1X BUCK TO BE PROPERLY SECURED. SEE NOTE 3 SHEET 1

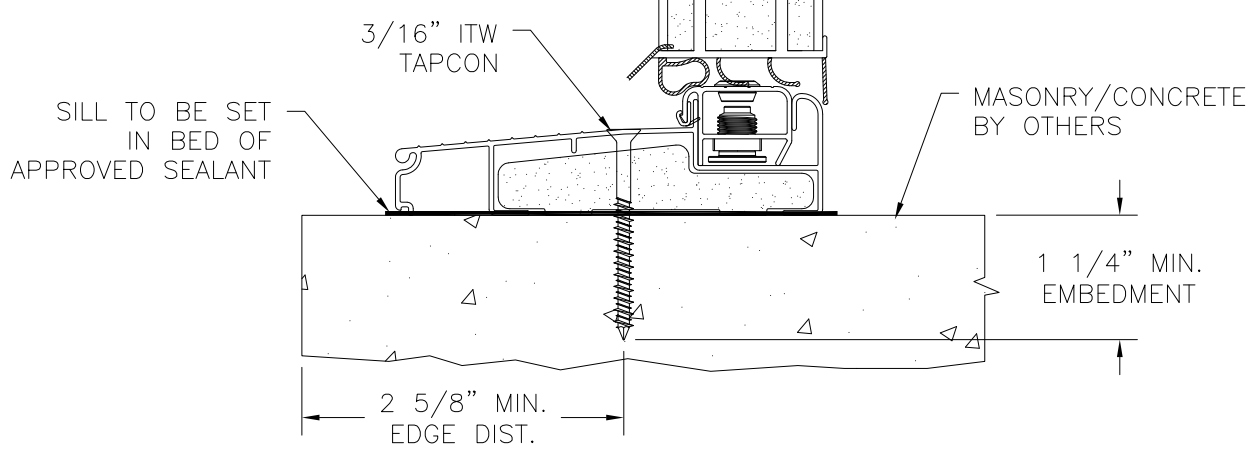
1/4" MAX. SHIM

EXTERIOR

INTERIOR



**HORIZONTAL CROSS SECTION**  
MASONRY/CONCRETE INSTALLATION

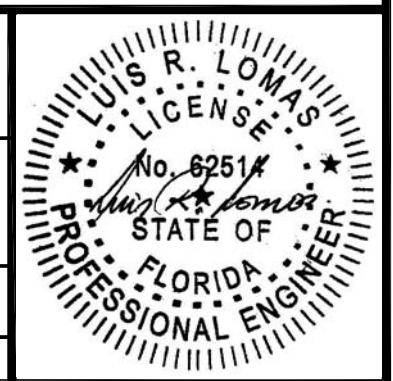


**VERTICAL CROSS SECTION**  
MASONRY/CONCRETE INSTALLATION

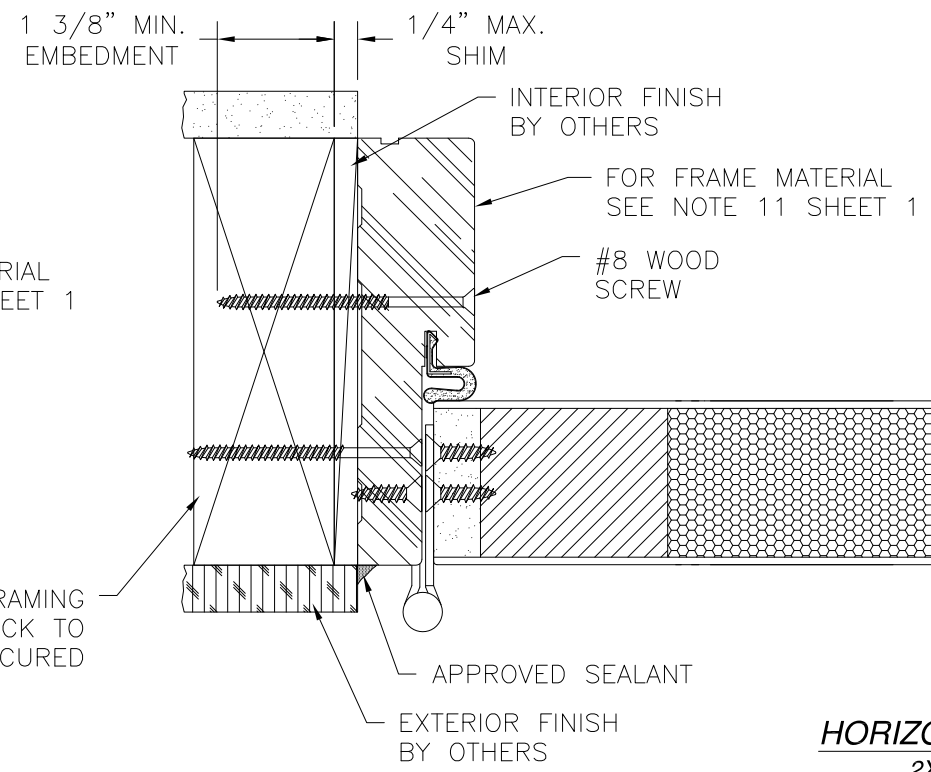
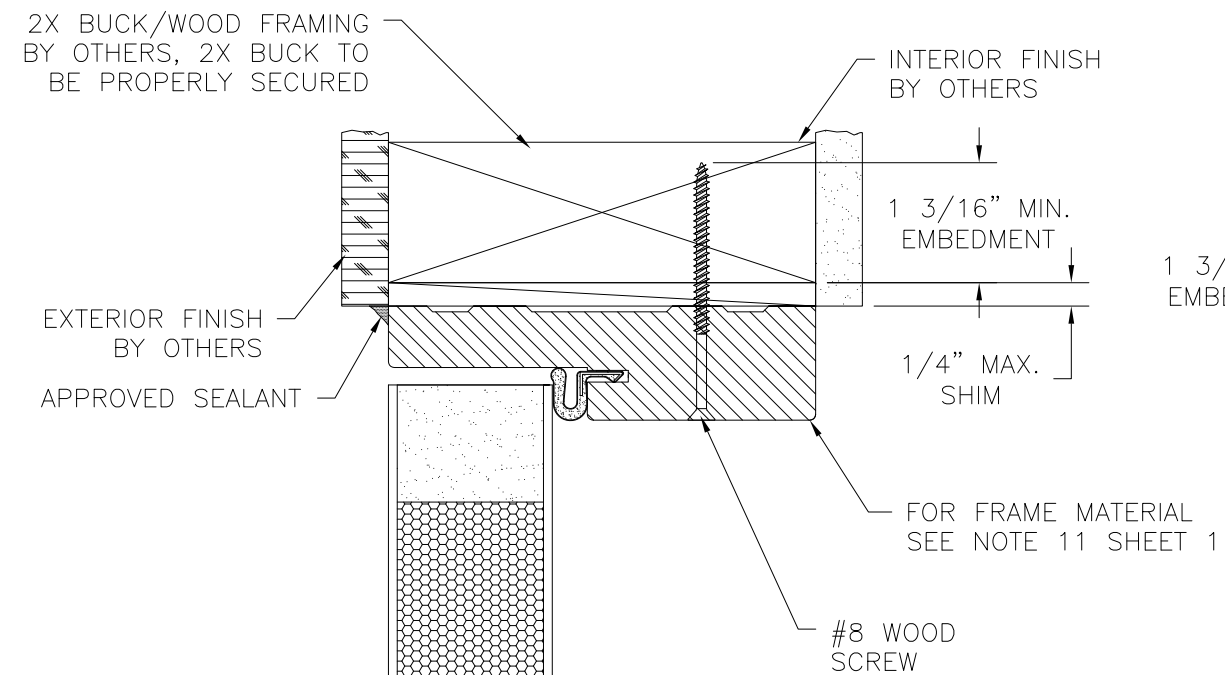
WINCORE WINDOW COMPANY, LLC  
250 STAUNTON AVE.  
PARKERSBURG, WV 26102

PLASTPRO OPAQUE FIBERGLASS IS/OS  
DOUBLE DOOR - NON-IMPACT  
INSWING INSTALLATION DETAILS

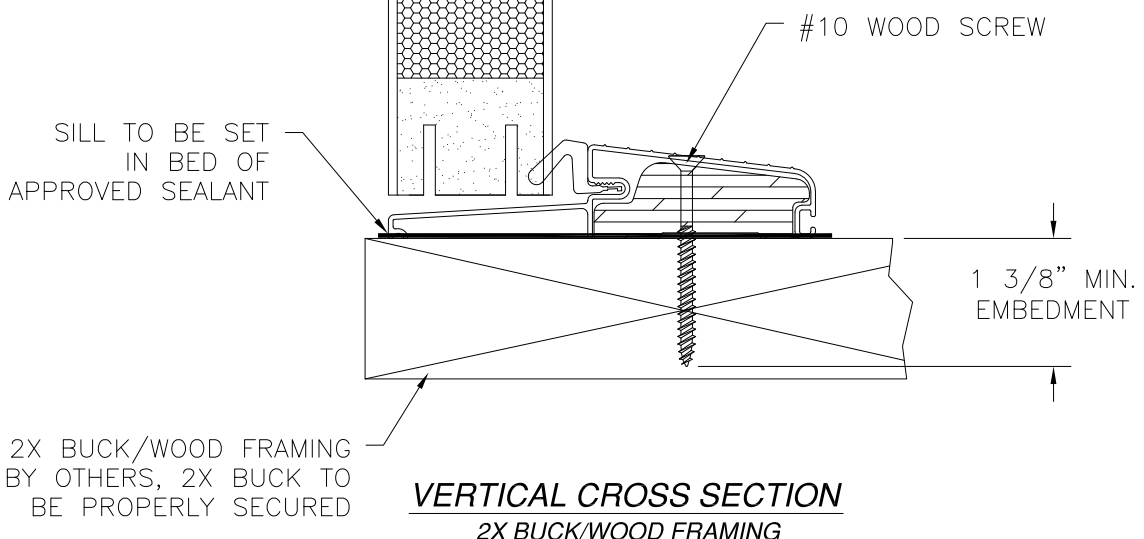
DRAWN: TJH	DWG NO. 08-01103	REV A
SCALE NTS	DATE 09/02/10	SHEET 6 OF 9



REVISIONS			
REV	DESCRIPTION	DATE	APPROVED
A	ADDED FRAME MATERIAL	2/28/11	R.L.



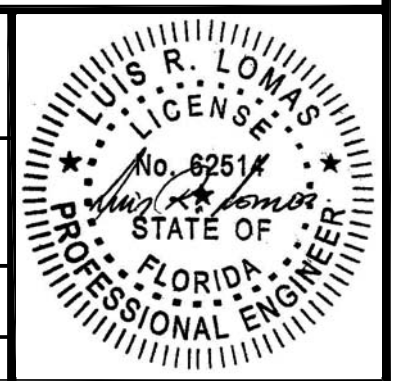
**HORIZONTAL CROSS SECTION**  
2X BUCK/WOOD FRAMING



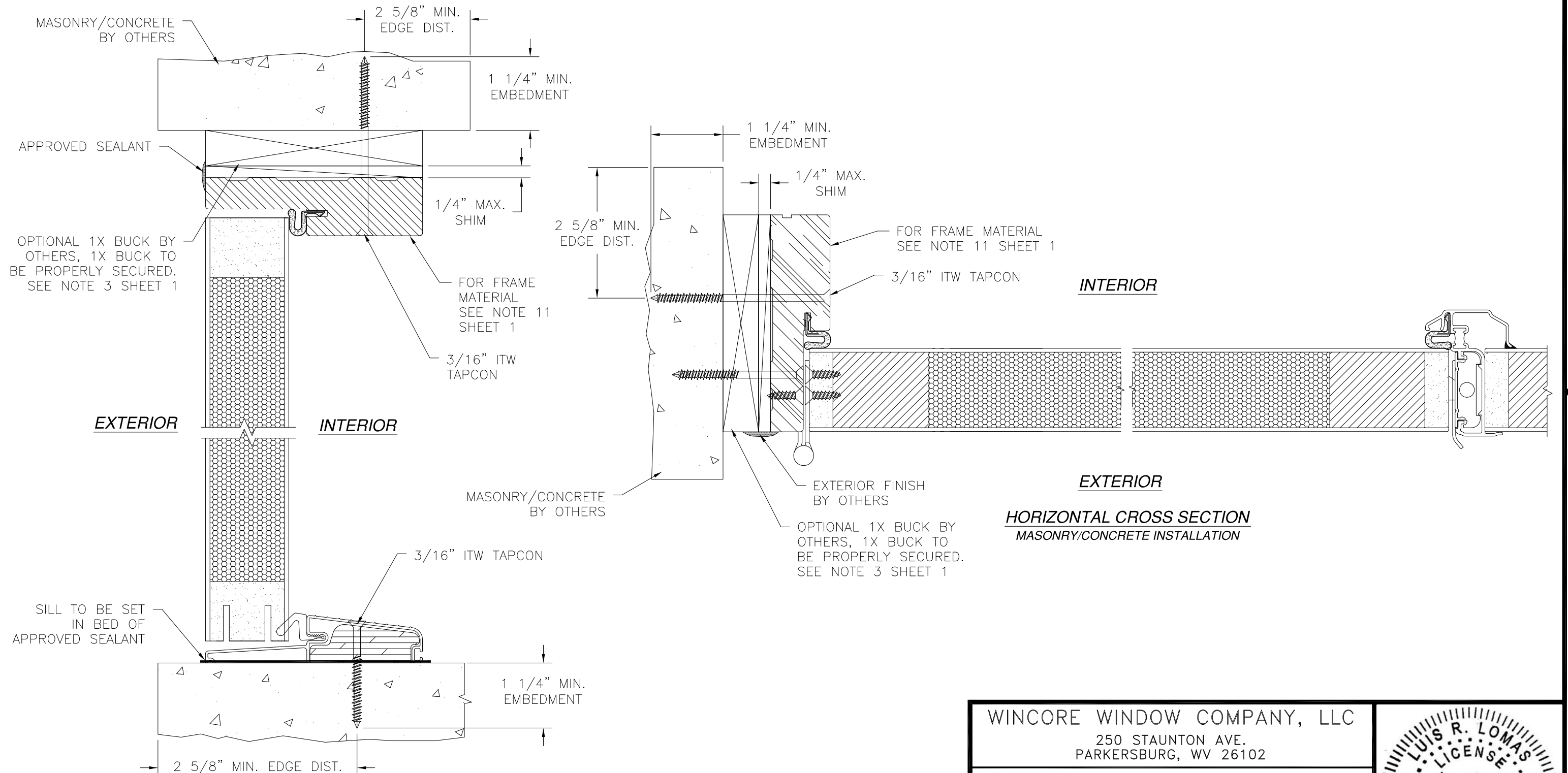
WINCORE WINDOW COMPANY, LLC  
250 STAUNTON AVE.  
PARKERSBURG, WV 26102

PLASTPRO OPAQUE FIBERGLASS IS/OS  
DOUBLE DOOR - NON-IMPACT  
OUTSWING INSTALLATION DETAILS

DRAWN: TJH	DWG NO. 08-01103	REV A
SCALE NTS	DATE 09/03/10	SHEET 7 OF 9



REVISIONS			
REV	DESCRIPTION	DATE	APPROVED
A	ADDED FRAME MATERIAL	2/28/11	R.L.



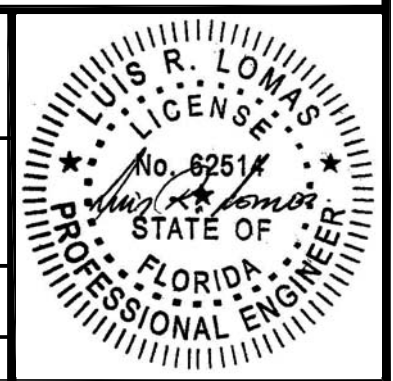
**HORIZONTAL CROSS SECTION**  
MASONRY/CONCRETE INSTALLATION

**VERTICAL CROSS SECTION**  
2X BUCK/WOOD FRAMING

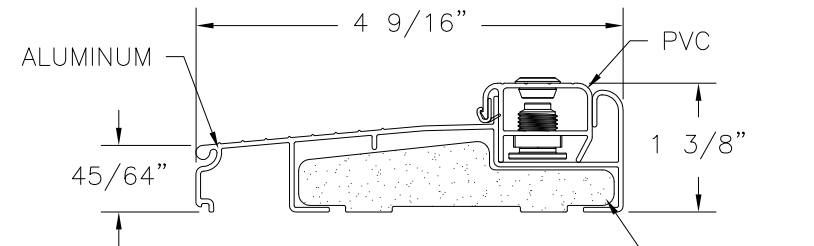
WINCORE WINDOW COMPANY, LLC  
250 STAUNTON AVE.  
PARKERSBURG, WV 26102

PLASTPRO OPAQUE FIBERGLASS IS/OS  
DOUBLE DOOR – NON-IMPACT  
OUTSWING INSTALLATION DETAILS

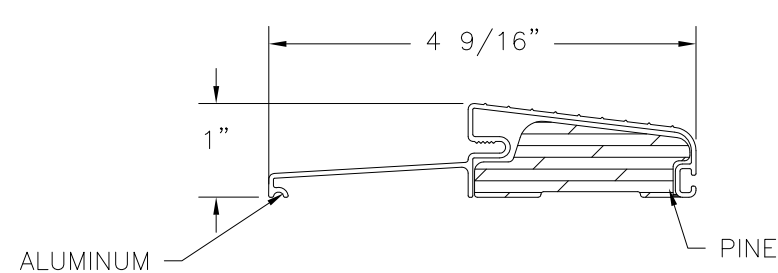
DRAWN: TJH	DWG NO. 08-01103	REV A
SCALE NTS	DATE 09/02/10	SHEET 8 OF 9





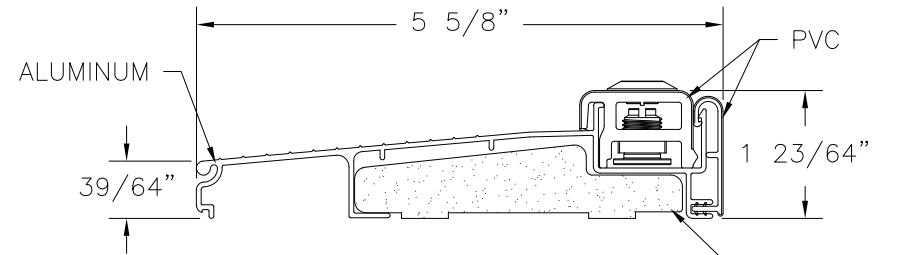


**ENDURA INSWING SILL ZAI4566**  
ALUMINUM 6063-T6 .050" THICK

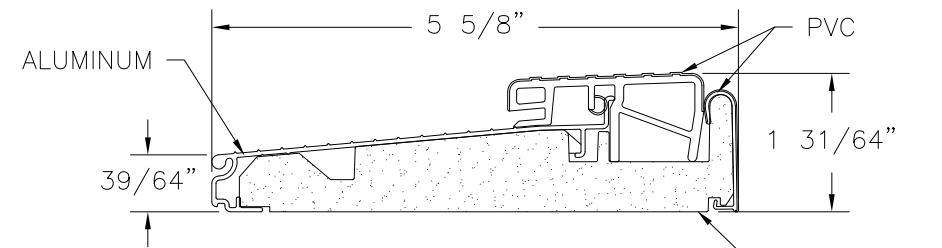


**ENDURA OUTSWING SILL ZFOB4566**  
ALUMINUM 6063-T6 .050" THICK

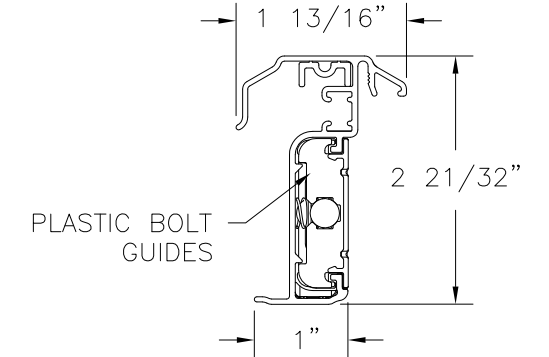
REVISIONS			
REV	DESCRIPTION	DATE	APPROVED
A	ADDED FRAME MATERIAL	2/28/11	R.L.



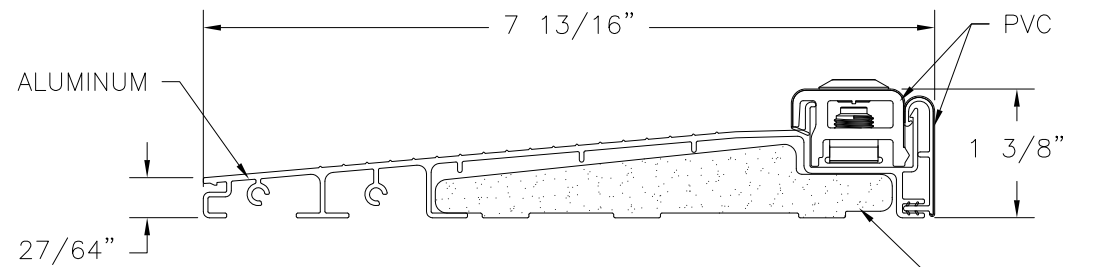
**ENDURA INSWING SILL ZAI5625**  
ALUMINUM 6063-T6 .062" THICK



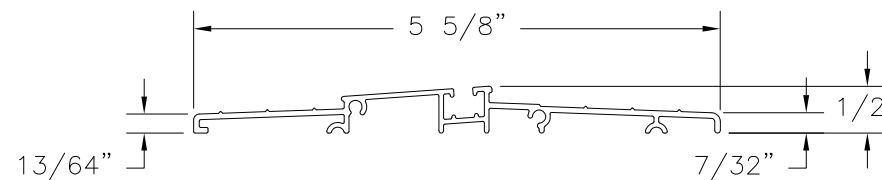
**ENDURA OUTSWING SILL ZOB5625**  
ALUMINUM 6063-T6 .045" THICK



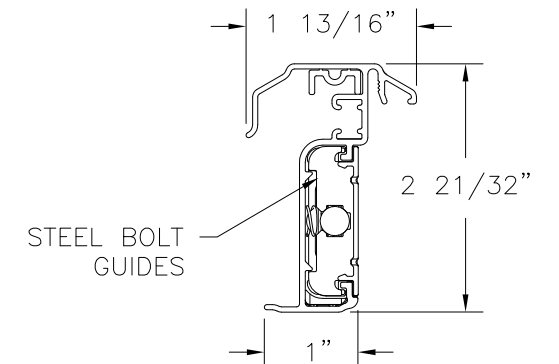
**ENDURA INSWING/OUTSWING ULTIMATE ASTRAGAL**  
ALUMINUM 6063-T6 .062" THICK



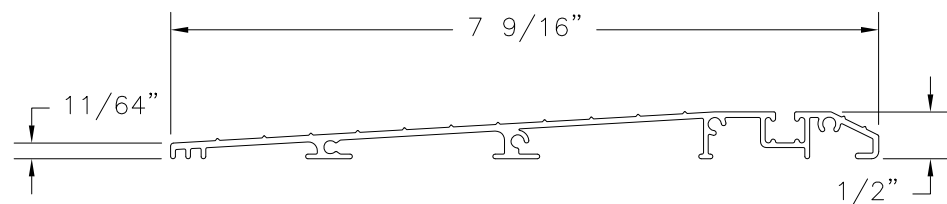
**ENDURA INSWING SILL ZAI7815**  
ALUMINUM 6063-T6 .062" THICK



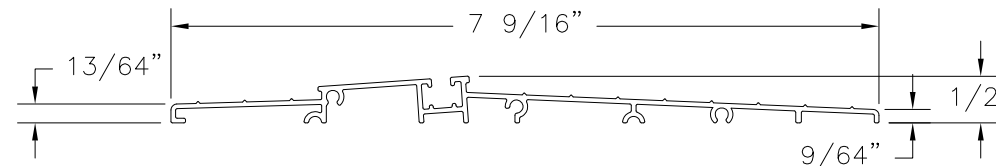
**ENDURA ADA OUTSWING SILL ZHCOT5622**  
ALUMINUM 6063-T6 .060" THICK  
SEE NOTE SHEET 9



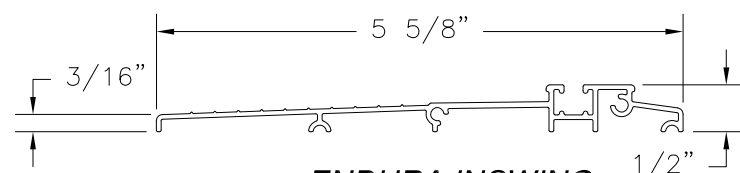
**ENDURA INSWING/OUTSWING ULTIMATE HURRICANE ASTRAGAL**  
ALUMINUM 6063-T6 .062" THICK



**ENDURA INSWING ADA SILL HCIT7565MM**  
ALUMINUM 6063-T6 .060" THICK  
SEE NOTE SHEET 9



**ENDURA ADA OUTSWING SILL ZHCOT7562M**  
ALUMINUM 6063-T6 .050" THICK  
SEE NOTE SHEET 9



**ENDURA INSWING ADA SILL ZHCIT5622M**  
ALUMINUM 6063-T6 .060" THICK  
SEE NOTE SHEET 9

NOTE: ADA SILLS HAVE NOT BEEN TESTED FOR WATER RESISTANCE AND MUST ONLY BE INSTALLED IN AREAS WHERE WATER RESISTANCE IS NOT REQUIRED.

WINCORE WINDOW COMPANY, LLC  
250 STAUNTON AVE.  
PARKERSBURG, WV 26102

PLASTPRO OPAQUE FIBERGLASS IS/OS  
DOUBLE DOOR - NON-IMPACT  
APPROVED SILLS AND ASTRAGAL DETAILS

DRAWN: TJH	DWG NO. 08-01103	REV A
SCALE NTS	DATE 09/03/10	SHEET 9 OF 9

